

Notes on This Manual

Keep these instructions with your computer at all times. The proper set up, use and care can help extend the life of your computer. In the event that you transfer ownership of this computer, please provide these instructions to the new owner.

This manual is divided into sections to help you find the information you require. Along with the **Table of Contents**, an **Index** has been provided to help you locate information.

In addition, many application programs include extensive help functions. As a general rule, you can access help functions by pressing F1 on the keyboard. These help functions are available to you when you use the Microsoft Windows® operating system or the various application programs.

This interactive manual is designed to provide additional information about your Notebook as well as useful links accessible via the World Wide Web.

Windows Vista™ offers you additional aids to learn about the new version of Windows and your Notebook. You can find this information in the **Welcome Center** after booting up your Notebook. We have listed further useful sources of information starting on page 67.

Document Your Notebook

It is important to document the details of your Notebook purchase in the event you need warranty service. The serial number can be found on the back of the Notebook:

Serial Number
Date of Purchase
Place of Purchase

Audience

These instructions are intended for both the novice and advanced user. Regardless of the possible professional utilization, this Notebook is designed for day-to-day household use. The functions and applications for use with this Notebook have been designed with the entire family in mind.

Quality

We have selected the components in this computer for their high level of functionality, ease of use, safety and reliability.

Through balanced hardware and software design we are able to provide you with an innovative personal computer useful for applications relating to both work and leisure.

We are pleased to welcome you as our newest customer.

Copying this manual

This document contains legally protected information. All rights reserved. Copying in mechanical, electronic and any other form without the written approval of the manufacturer is prohibited.

Copyright© 2007 MEDION®. / 07-03





All rights reserved. Microsoft®, MS-DOS®, and Windows are registered trademarks of Microsoft Corporation in the U.S. and other countries.

Pentium® is a registered trademark of Intel Corporation.

The names of actual companies and products mentioned herein may be the trademarks of their respective owners.

Information in this document is subject to change without notice.

Table of Contents:

- Safety and Maintenance..... 1**
 - Safety Instructions 3
 - Data Security..... 4
 - Set-Up Location..... 4
 - Ambient Temperature 5
 - Working in Comfort 6
 - Connecting 7
 - Power supply..... 7
 - Cabling..... 8
 - Information about the regulatory compliance according to R&TTE 9
 - Modem 9
 - Touch Pad 9
 - Battery Operation..... 10
- Views & Handling 11**
 - Included with Your Notebook 13
 - Views 14
 - Open Notebook 14
 - Left Side 15
 - Right Side..... 16
 - Rear Side 16
 - Device Indicators..... 17
 - Quick launch buttons..... 19
 - Allocation of the special keys 20
 - Getting Started..... 21
 - How to start: 21
 - Step 1 21
 - Step 2 23
 - Step 3 23
 - Short description of the Windows® Desktop 24
- Main Components 27**
 - Power Supply 29
 - On/Off Button..... 29
 - Power Adapter 30
 - Battery Operation..... 31
 - Inserting the Battery 31
 - Removing the Battery 32
 - Charging the Battery..... 33
 - Discharging the battery 33
 - Battery Performance 34
 - Power Management..... 35
 - Sleep Mode ( ⇨ ) 35
 - Hibernate Mode ( ⇨ ) 35

Display	36
Opening and Closing the Display.....	36
Screen Resolution.....	36
Replacing the cover.....	37
Connecting an External Monitor	39
Duplicating the Desktop	40
Extending the Desktop.....	40
Connecting a TV	41
Data Entry	42
The Keyboard.....	42
Notebook-Specific Key Combinations	42
Touch Pad	44
The Hard drive.....	45
Important Directories	46
The Optical Drive	47
Loading a Disc.....	47
Emergency Ejection of a Blocked Disc	49
Playing Back and Retrieving Data from Discs	49
Regional Playback Information for DVD.....	50
Subjects Concerning the CD/DVD-Rewriter.....	50
Recordable/Rewriteable Discs	50
The Sound Card	51
External Audio Ports	52
Modem	54
Modem Port.....	55
The Network	56
What is a network?.....	56
Ethernet-Network	57
Wireless LAN.....	58
The Multimedia Card Reader	60
Inserting Memory Cards.....	60
Removing Memory Cards.....	60
Express Card/54	61
Installing Express Card	61
Removing Express Card.....	62
Universal Serial Bus (USB) Port.....	63
IEEE 1394 (FireWire)	65
Application Options for IEEE1394.....	65
Technical Specifications.....	65
Securing the Notebook	66
Startup Password	66
Using a safety lock.....	66

Software.....	67
Getting to Know Windows Vista™.....	67
Windows Vista™ – Quickstartguide.....	67
Windows Vista™ – Help and Support.....	67
Windows Vista™ – Welcome Center	68
Windows Vista™ – User Account Control	69
Installation of Software.....	70
Software De-installation.....	71
Windows Activation	72
Product activation on your Notebook	72
The BIOS Set-up-Program.....	73
Running the BIOS Set-up	73
BullGuard Internet Security	74
First Aid	77
FAQ – Frequently Asked Questions.....	79
Data and System Security	80
Data Security.....	80
Maintenance Programs	80
Password Reset Disk	80
Windows® Update.....	81
Windows Update Information for Data Security.....	82
System Restore	83
Correction.....	83
System Restore powered by Symantec	84
Limits of the Recovery	84
Performing the Restore	84
Troubleshooting.....	85
Localize the Cause.....	85
Check Cables and Connections.....	85
Errors And Possible Causes.....	86
Additional Support.....	87
Driver Support	87
Maintenance	88
Care of the TFT Display	88
Transporting the Notebook	89
Recycling and Disposal.....	90
Batteries and Proper Treatment.....	90
Upgrades and Repairs	92
Notes for Service Engineers.....	92

Appendix	93
Standards	95
Electromagnetic Compatibility	95
ISO 13406-2 Class II	95
FCC Compliance Statement	97
Index.....	98

Chapter 1

Safety and Maintenance

Subject	Page
Safety Instructions	3
Data Security.....	4
Set-up Location.....	4
Ambient Temperature	5
Working in Comfort	6
Connecting.....	5
Information about the regulatory compliance according to R&TTE	9
Modem	9
Touch Pad.....	9
Battery Operation.....	10

Safety Instructions

Please follow the instructions in this section for the safe operation of your notebook:

- Do not allow small children to play unattended with electrical equipment. Children are incapable of judging potential risks properly.
- Keep the packing materials, such as foam, away from children. The danger of suffocation could arise in the case of misuse.
- Do not open the case of the notebook, the battery or the power adaptor. When the case is open there is a danger of severe electric shock.
- CD-ROM-/CDRW-/DVD-drives are Laser Class 1 devices. These lasers must remain in their sealed casing. DO NOT remove the drive covers, as exposure to the lasers may be harmful.
- Do not insert objects through the slots and openings of the notebook. This may lead to electric shock, electrical short-circuit or fire that will damage your notebook.
- Slots and openings in the notebook serve to ventilate it. Do not cover up these openings, because the notebook could overheat otherwise.
- The notebook is not intended to be operated in a heavy industry company. Operation under extreme environmental conditions can result in damage to your notebook.
- Do not operate the notebook during a thunderstorm, in order to avoid damage through lightning strike.
- Do not cover the slots and openings of the notebook. Never place objects on top of the notebook that would exert any pressure on the display. There is a danger that even slight pressure may break the TFT display.
- There is a risk of injury if the TFT display breaks. Use protective gloves to pack up the broken pieces and contact customer service to arrange for proper disposal. It is important to thoroughly wash your hands after handling a broken TFT display. There is a chance that chemicals may have been released.
- Do not forcibly open it.
- In order to avoid damage to the display, do not touch it with your fingers or sharp objects.
- Never lift the notebook by the TFT Display; doing so could break the hinges.

Switch off your Notebook immediately or do not switch it on at all and contact customer service ...

- ... if the power cord or the connectors attached to it are burnt or damaged. Replace the defective power cord with an original power cord. Under no circumstances may a defective power cord be repaired.
- ... if the housing of the Notebook is damaged or fluids have leaked into it. Have the Notebook checked by customer service first, because the Notebook may not be safely operated otherwise and there may be a life-threatening risk of electrocution!

Data Security

Attention!

Every time you update your data make back-up copies on an external storage medium. The supplier does not assume liability for data loss or damage to data storage units, and no claims can be accepted for damages resulting from the loss of data or consequential losses.

Set-Up Location

- Keep your notebook and all connected peripherals away from moisture, dust, heat and direct sunlight. Failure to do so can lead to Notebook malfunction or damage.
- It is highly recommended you do not use the notebook outdoors.
- Operate the notebook and all peripherals on a stable, balanced and vibration-free surface.
- Do not leave the base of your notebook on your lap or any part of your body for a long period of time. The notebook can become very warm while it is turned on or charging and can cause discomfort or injury from heat exposure.
- In the first hours of operation, new devices may emit a typical, unavoidable but completely harmless smell, which will decline increasingly in the course of time. We recommend you to ventilate the room regularly, in order to counteract the formation of the smell. During the development of this product, we have made sure that the applicable limits are clearly fallen below.

Ambient Temperature

- The notebook is most reliably operated at an ambient temperature between +41° (5° C) and +104° F (40° C) and at a relative humidity between 20% and 70% (without condensation).
- When powered off, the notebook can be stored at temperatures between 32° and 140° F (0° and 60° C).
- Unplug the cable during thunderstorms and make especially sure to remove the antenna cables, if present. We recommend the use of a surge protector for additional safety, in order to protect your notebook from being damaged by power peaks or lightning strikes through the power network.
- Wait until the notebook has reached ambient (room) temperature before turning it on or connecting it to the power adapter. Drastic variations in temperature and humidity can create condensation within the Notebook and may cause it to short-circuit.
- For transporting the notebook keep the original packing.

Working in Comfort



Sitting in one position for long periods can be uncomfortable. To minimize the potential for physical discomfort or injury, it's important that you maintain proper posture.

- **Back** – While sitting at your work surface, make sure your back is supported by the chair's backrest in erect position or angled slightly backwards.
- **Arms** – Your arms should be relaxed and loose, elbows close to your sides, with forearms and hands approximately parallel to the floor.
- **Wrists** – Your wrists should be as straight as possible while using the keyboard, mouse or trackball. They should not be bent sideways, or more than 10 degrees up or down.
- **Legs** – Your thighs should be horizontal or angled slightly downward. Your lower legs should be near a right angle to your thighs. Your feet should rest flat on the floor. If necessary, use a footrest, but double check that you have your seat height adjusted correctly before getting a footrest.
- **Head** – Your head should be upright or tilted slightly forward. Avoid working with your head or trunk twisted.
- **Overall** – Change your position frequently and take regular breaks to avoid fatigue.

Connecting

Pay attention to the following information, in order to connect your notebook correctly:

Power supply

- Do not open the power adapter housing. When the housing is open there is a danger of severe electric shock. It contains no user-serviceable parts.
- The electric outlet must be in the vicinity of the notebook and within reach of the power adapter cables.
- To disconnect your notebook from the power source, or set the notebook to battery operation, remove the power cord from the notebook's power socket.
- Only use the notebook with a power adaptor operating at AC 110-240V~/50-60 Hz. For details on power consumption, please refer to the rating plate on the rear of your notebook. If you are unsure of the type of power supply available at the point of use, ask your local power company.
- Use only the supplied power cord and power adapter.
- If using an extension cord, make certain that it meets your local safety requirements. If in doubt, consult an electrician.
- To provide additional protection against electric shock, power surges, lightning strikes, or other electrical damage to your notebook, we recommend the use of a surge protector.
- Firstly remove the plug, and then the connector of the notebook, from the power source, if you want to detach the network adapter from the mains power supply. A reverse sequence could damage the network adapter or the notebook. Always hold the connector firmly when removing it. Never pull on the power cord.

Cabling

- Arrange cables so no one can walk on or trip over them.
- Do not place objects on any of the cables.
- To avoid damage to your Notebook, connect your peripherals (e.g., keyboard, mouse and monitor) whilst your notebook is powered off. Some devices can be connected whilst your notebook is in use. These devices usually have a USB or IEEE 1394 connector. Please follow the appropriate instructions for each device.
- Keep the notebook at least one meter (approximately three feet) away from high frequency and magnetic interference sources (e.g., televisions, loudspeaker cabinets, mobile telephones, etc.) in order to avoid malfunctions and/or loss of data.
- Please note that only shielded cables shorter than 3 metres (9.84 ft) should be used for the LPT, COM, USB, IEEE 1394, audio, video and network interfaces with this notebook. Please use only doubly screened cables in the case of printer cables.
- Do not replace the cables supplied. Only use the cable supplied with the notebook, since that cable will have been tested extensively in our laboratory.
- Also only use the connection cables supplied with the devices to connect your peripherals.
- Make sure that all connecting cables are connected with the respective peripheral devices, in order to avoid perturbing radiation. Remove any cables not needed.
- The connection of devices is limited to equipment that complies with EN60950 “Safety of information technology equipment” or EN60065 “Audio, video and similar electronic apparatus. Safety requirements”.

Information about the regulatory compliance according to R&TTE

The following remote equipment has been supplied with this notebook:

- Wireless LAN

The company declares herewith that these devices are in agreement with the fundamental requirements and the other relevant terms of the 1999/5/EG Guideline. Complete declarations of conformity are available under www.medion.com/conformity.

The **modem** meets the requirements of TBR21 (01/1998) and EG201120/V1.1.1/01/98 regarding connection with an analogue telephone network.

Modem

- If your system has a modem, please make sure you connect it to an **analogue** telephone line only. Connecting to a digital PBX, a digital line designed for broadband services or ISDN, a shared service line or a payphone will damage the modem or the devices to which it is connected.

Touch Pad

- Light pressure with the tip of your finger is all that is required to operate the touch pad. Because the touch pad is electrostatic sensitive, objects cannot be used in place of your fingers. Using a pen or other object can damage the touch pad or cause the notebook to malfunction.

Battery Operation

To extend the life and power of your battery and guarantee secure operation, the instructions below should be followed:

- Never expose the battery to direct sunlight or heat for long periods.
- Do not dispose of the battery by fire.
- Disregarding these instructions will lead to damage and under some circumstances may even cause the battery to explode.
- Do not open the battery housing; it contains no user-serviceable parts.
- Keep the battery away from electrically conductive materials, chemical substances and cleaning agents.
- Only use the originally supplied power adapter to charge the battery.
- Ensure (through the display or the signalling sound of the notebook) that the battery is completely discharged before recharging it.
- Replace the battery only with the same type or an equivalent type recommended by the manufacturer.
- Charge the battery only until the battery charging light goes out. Also, refer to the instructions under “Charging the Battery” on page 33 for instructions on checking the battery level.
- Only change the battery when the unit is switched off.
- Batteries are classified as special waste and should always be disposed of properly. Contact Customer Service for more details.

Chapter 2

Views & Handling

Subject	Page
Included with your notebook	13
Open notebook.....	14
Left side.....	15
Right side	16
Rear side.....	16
Power and status indicators.....	17
Quick launch buttons.....	19
Getting started	21

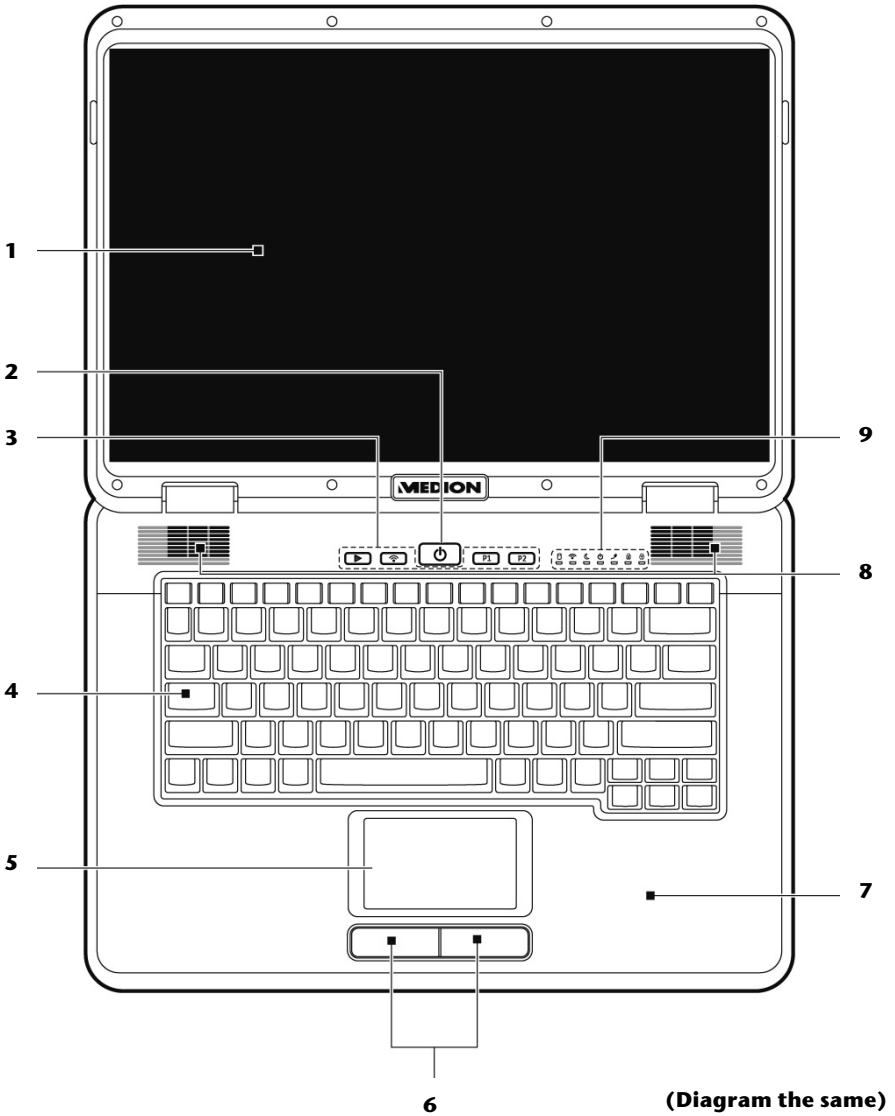
Included with Your Notebook

Please check that the contents are complete and notify us **within 14 days of purchase** if any of the following components are missing:

- Notebook
- Battery
- Power adapter with connection cable
(Model: KSAFI1900342T1M2)
- Modem cable
- Mouse
- Application-/Support-Disc
- OEM version of operating system
- Documentation

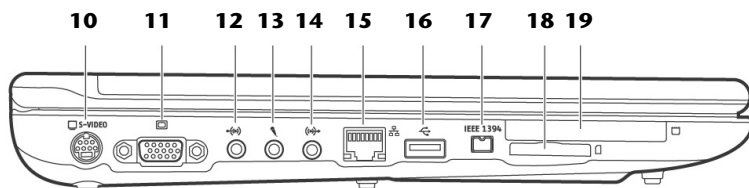
Views

Open Notebook



- 1** - TFT display (⇒ p. 36)
- 2** - Power ON/OFF (⇒ p. 29)
- 3** - Quick launch buttons (⇒ p. 19)
- 4** - Keyboard (⇒ p. 42)
- 5** - Touchpad (⇒ p. 44)
- 6** - Touchpad buttons (⇒ p. 44)
- 7** - Palm rest
- 8** - Stereo speaker
- 9** - Device indicators (⇒ p. 17)

Left Side

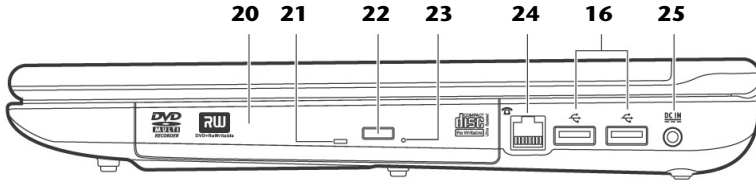


(Diagram the same)

- 10** - TV out port (S-Video) (⇒ p. 41)
- 11** - External monitor port VGA (⇒ p. 37)
- 12** - Line In * (⇒ p. 52)
- 13** - Microphone* (⇒ p. 52)
- 14** - Audio Out* /
Digital Audio Out (S/P-DIF, optical) (⇒ p. 52)
- 15** - LAN port (RJ-45) (⇒ p. 56)
- 16** - USB port (⇒ p. 63)
- 17** - FireWire IEEE 1394 (⇒ p. 65)
- 18** - Multimedia card reader (⇒ p. 27)
- 19** - Express Card/54 (⇒ p. 61)

*** Ports with dual function. Configuration is set with the included software (⇒ p. 52).**

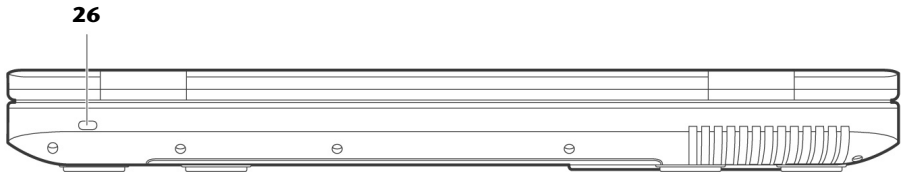
Right Side



(Diagram the same)

- 20 - Optical Drive (⇒ p. 47)
- 21 - Activity LED optical drive (⇒ p. 47)
- 22 - Disc eject button (⇒ p. 47)
- 23 - Emergency ejection (⇒ p. 49)
- 24 - Modem port (RJ-11) (⇒ p. 53)
- 16 - USB port (⇒ p. 63)
- 25 - Power socket (⇒ p. 30)

Rear Side

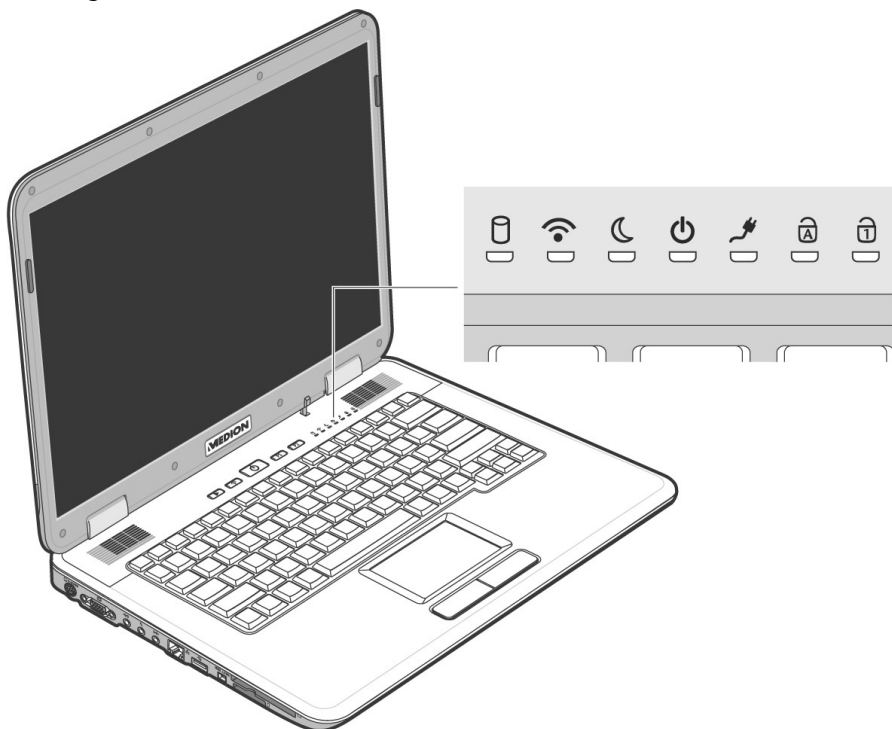


(Diagram the same)

- 26 - Kensington® lock (⇒ p. 66)

Device Indicators

LED's indicate the power and operating system states of the Notebook. The meaning of each LED is:



Access indicator

This LED lights or flashes when the notebook is accessing the hard disk.



Wireless LAN

Display for wireless data exchange. If the display lights **steadily** the wireless LAN function is enabled (optional feature)



Sleep Indicator

This LED lights when the Notebook is in stand-by mode.



Power indicator

This LED lights when the computer is turn on. Blinks when the battery is low in power.



Battery LED

This LED lights when the battery is charging.



Capital Lock

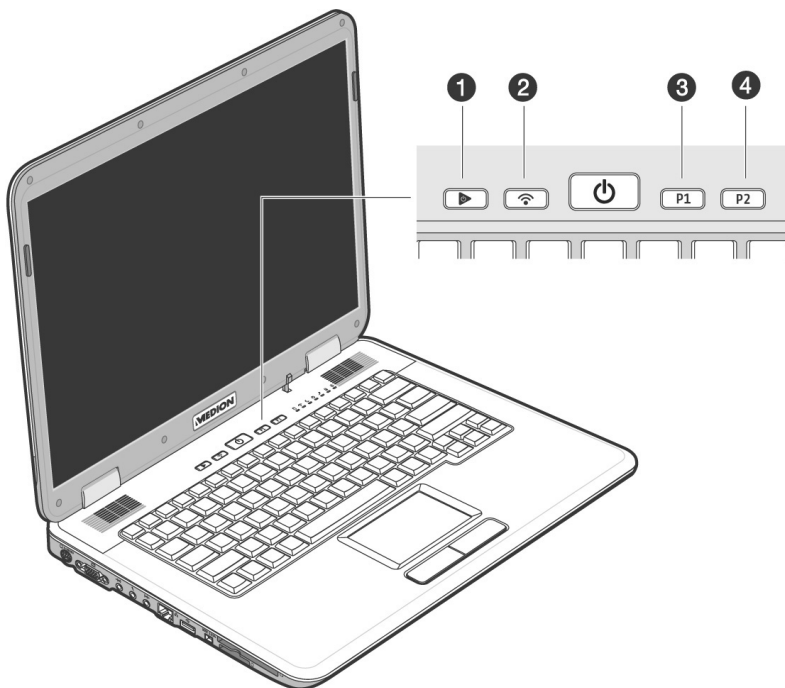
This LED lights when CAPS-Lock has been activated. This sets the keyboard to capital letters.



Num Lock

This LED lights when NUM-Lock has been activated (Fn+NumLk).

Quick launch buttons




- 1** **Multimedia button**
Let the user start the application Media Player or Media Center.
- 2** **WLAN**
This key enables or disables the **wireless LAN** function.
- 3** **User-programmable**
Button that can be **adjusted by the user** to enable the preferred program to start quickly.
- 4** **User-programmable**
Button that can be **adjusted by the user** to enable the preferred program to start quickly.

Allocation of the special keys

You can allocate programs to the special buttons by means of the '**Launch Manager**'.

You start the program like this:

1. Click on  **Start**
⇒ ▶ **All Programs**
⇒ **Launch Manager**
2. You can determine which program will be started by the respective button by means of the '**Insert**' or '**Delete**' control buttons.
3. Click on '**OK**' to accept the setting, after you have selected the relevant program.

Getting Started

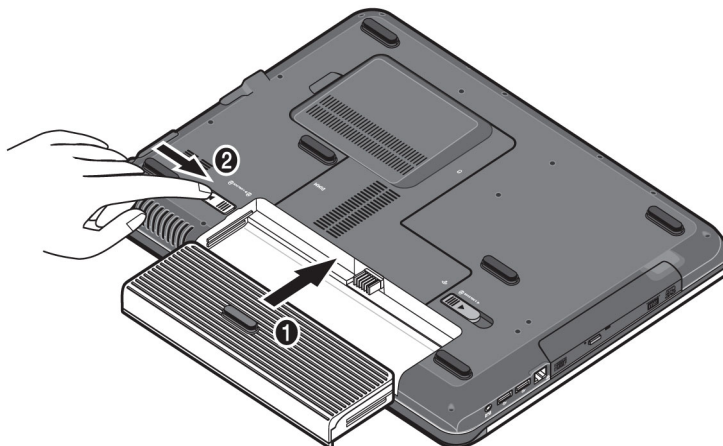
Before you get started using your notebook, first take a few moments to read the important section on **Safety**.

This notebook comes with software **fully pre-installed**. You do not have to install any of the discs supplied.

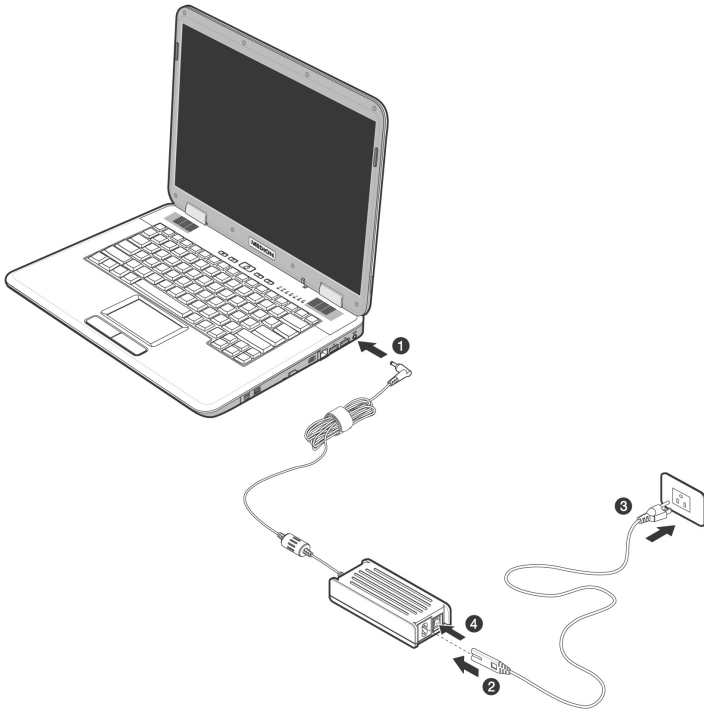
How to start:

Step 1

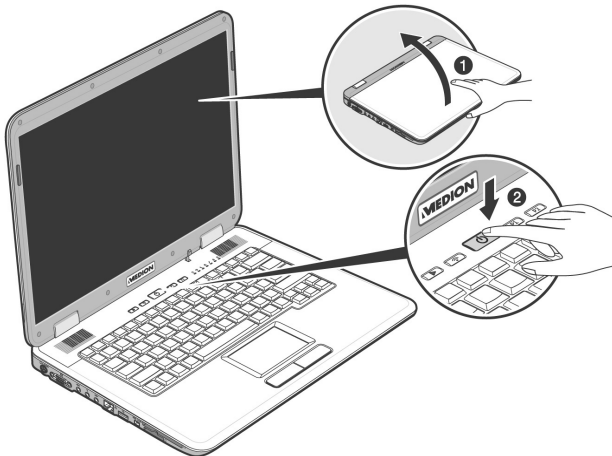
- Insert the battery before bringing the notebook into operation by sliding the battery pack into the compartment. Lock the battery (2) under all circumstances, in order to avoid it falling out unintentionally.



- Connect the supplied power adapter to the notebook at the notebook power socket (25). Connect the power adapter via a power cable to a free AC power outlet. Set the switch on the power adapter to the I setting, in order to supply the notebook with electricity and to charge the battery. (Set the switch to 0 to interrupt the electricity supply.)



- Open the display to the required position with your thumb and index fingers.



- Switch the notebook on by operating the On/Off Switch (2). The notebook starts and now goes through a number of phases.

Note

Make sure there is no bootable disc (e.g., the Recovery disc) in the optical drive. Such discs will prevent the operating system from loading off the hard drive.

The **operating system** is loaded from the hard disk. During the initial set-up, the loading process takes slightly longer than normal to register the operating system and the individual components completely. Your operating system is finished loading when a welcome screen is shown on your display.

Step 2

Follow the instructions on the screen. Dialogue boxes will explain any steps that need to be taken.

The greeting procedure will guide you through a series of dialogue boxes. The information in each dialogue box will explain the steps that need to be taken.

Should you have any questions just click on .

- **License Agreement**

The greeting procedure also displays the license agreement. Please read this carefully. It contains important legal information on the use of your software. In order to see the full text, use the mouse and the scroll bar on the right side of the screen to move downwards until you have reached the end of the document. You accept the agreement by clicking on the “**I accept the agreement**” option field. Only by doing so will you be entitled to use the product under lawful terms and conditions.

Step 3

After the login procedure the Windows® desktop appears on your screen.

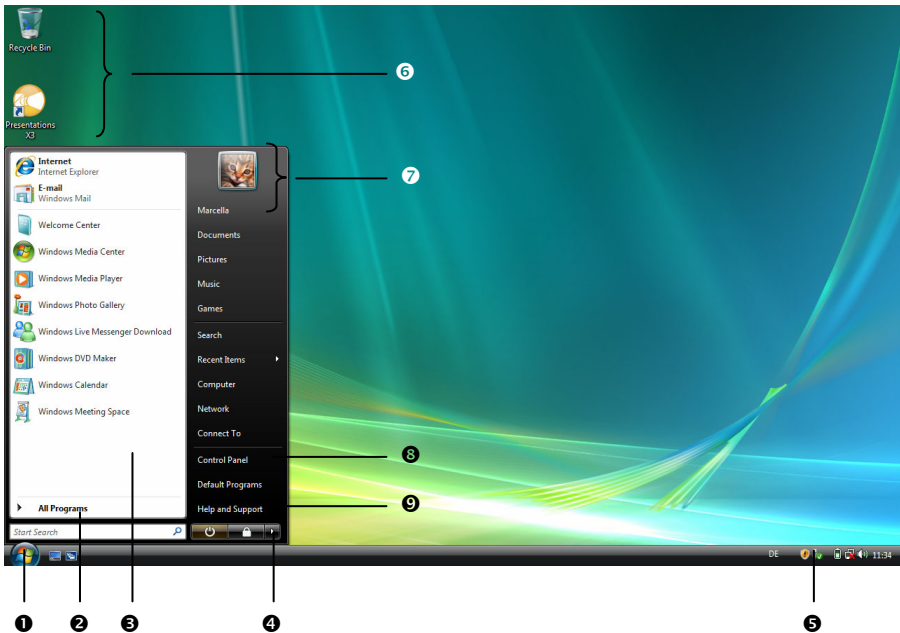
You will find a brief overview on the following pages.

After the login procedure the Windows® desktop appears on your screen. This can be adjusted so that the screen of your computer looks different.

However, basic operation is guaranteed.

Short description of the Windows® Desktop

After the login procedure the Windows® Vista™ desktop appears on your screen. (Your desktop might not look exactly like the one shown here.)



1. Start Button

Clicking the Start button brings up a menu where you can access help, software programs, files, and settings.

2. All Programs

All of the software programs installed on your notebook are ordinarily listed here. Click **All Programs** to reveal an extensive menu.

3. Program Bar

The most commonly used software programs are listed here.

4. Turn Off Computer

Click on this interface with the left mouse button and select the **Shut Down** option, in order to switch the Notebook off.

5. Task Bar

Here you receive information and status reports about Windows® Vista™ and which programs are running.

6. Desktop Icons

Desktop icons link to their respective programs. To start a program, double-click its desktop icon.

7. Logged in User

This tells you which user is logged in to your notebook.

8. Control Panel

You can use the icons in Control Panel to change the appearance and functionality of Windows® Vista™. These icons represent options for configuring your notebook.

9. Windows® Vista™ Help

Here you can find information on using your notebook, networking, backup, and many other tasks.

Chapter 3

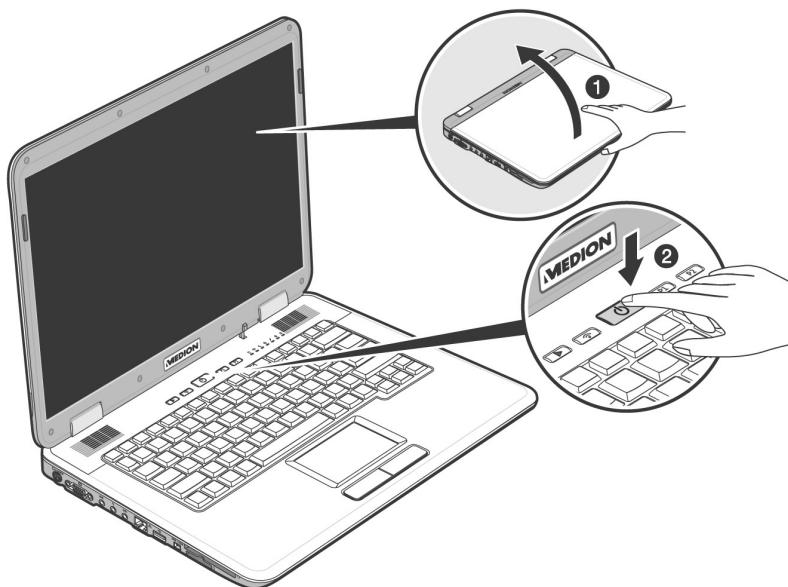
Main Components

Subject	Page
Power Supply	29
Display	36
Data entry	42
Hard Drive.....	45
Optical Drive.....	47
Sound Card.....	51
Modem	53
Network.....	56
The Multimedia Card Reader	60
Express Card/54	61
Universal Serial Bus (USB) Port	63
IEEE 1394 (FireWire)	65
Securing the Notebook	65
Software.....	67

Power Supply

On/Off Button

Power on or off your notebook by pressing the on/off button **(2)** briefly.



The operational indicator will inform you about the operational status of the notebook. The notebook will always be switched off, if the main switch is pressed for more than 4 seconds.

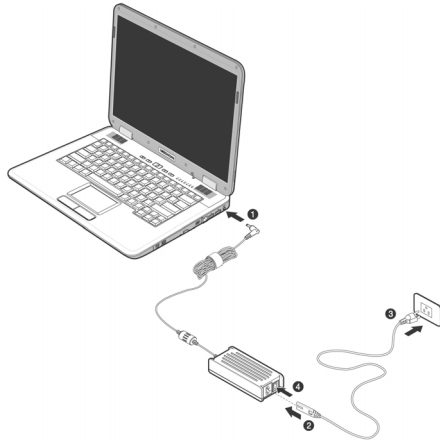
Warning!

Do not switch off your notebook while the **hard disk** or the optical drive is running and the corresponding **media activity LEDs** are lit. Otherwise data may be lost. To protect the hard disk you should always wait for 20 seconds after powering down the notebook before powering it up again.

Power Adapter

Your notebook is supplied with a universal AC power adapter, which automatically adjusts to the available power source. The following levels are supported: **AC 100-240V~/ 50-60 Hz**. Please follow the power supply **safety instructions** found on page 5.

The power adapter is connected via a power cord to an AC outlet. The DC power lead from the power adapter is connected to the **right side of the notebook (25)**.



The adapter has an on and off switch. No electricity will be used and the notebook will not be supplied with electricity if the switch is set to OFF (0).

The adapter provides the notebook with power in the ON setting (1) and also charges the battery. The power supply indicators of the notebook provide details on the operating state. The battery is also being charged when you are working on your notebook with the power adapter. The power adapter is still live if the notebook is not connected with it. You should therefore unplug the power adapter from the outlet if it is not connected to the notebook or set the adapter to OFF (0).

Warning!

Use only the power adapter and power cord supplied with your notebook.

Battery Operation

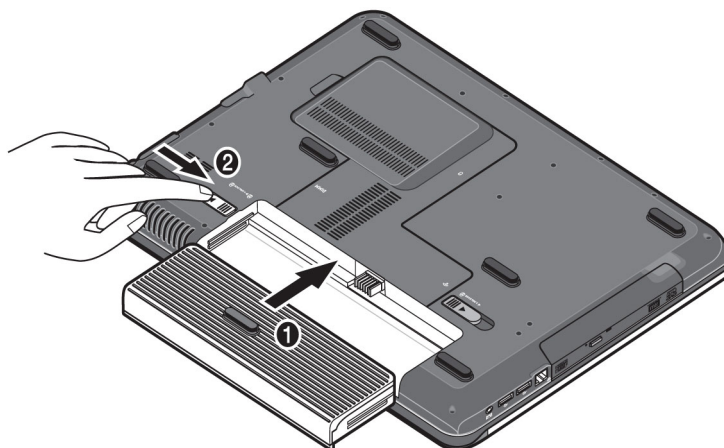
Note

Please charge and discharge the new battery completely two to three times in succession, so that it will achieve its full performance!

Batteries store electrical energy in their cells and then deliver it when needed. The useful life and performance of your battery depend on careful handling. The battery should be completely discharged before a charging process and completely charged again, in order to optimize its useful life and its performance. You must also pay attention to the Safety Notes from page 8.

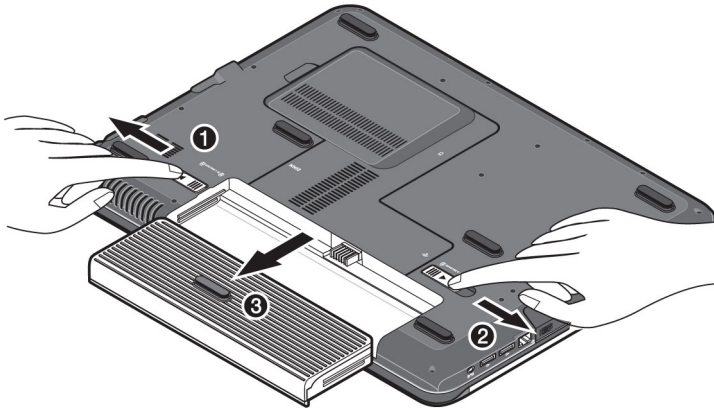
Inserting the Battery

Slide the battery into the battery compartment. Lock the battery (2) under all circumstances, in order to avoid it falling out unintentionally.



Removing the Battery

Push the Safety Lock (❶) to the 'Unlock' position, in order to remove the battery pack.



Warning!

Do not remove the battery while the notebook is running on battery power. You increase the possibility of losing data.

Warning!

Pay attention that the contacts to the battery and the notebook are not dirty or damaged when storing the battery and using the notebook. This could lead to malfunctions.

Charging the Battery

The battery is charged via the power adapter. If the power adapter is connected, it charges the battery automatically, whether the notebook is turned on or not. When the notebook is switched off, full charging takes a few hours. If the notebook is switched on, the charging process takes a significantly longer time.

Note

The charging process will be interrupted if the temperature or the voltage of the battery is too high.

Discharging the battery

Operate the notebook by means of the battery until it switches off independently because of the low battery charge.

Note

Think about saving your open files in good time, to avoid a possible loss of data.

Battery Performance

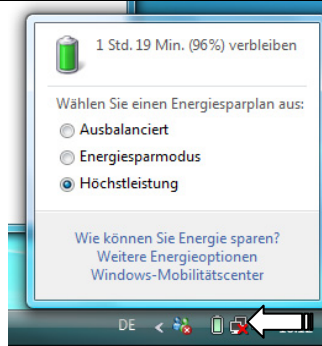
The particular operating duration will vary according to the setting of the energy saving functions. You can adjust these to your requirements under **Energy Options** in **System Control**. Apart from this, your notebook will require a higher power demand when carrying out certain tasks, such as playing back a DVD.

Checking the Battery Level

In order to check the current level of the battery, move the cursor over the power symbol in the taskbar.

The symbol of a battery is displayed during battery operation.

You will receive additional information about settings if you double click on this symbol.



Note

If you ignore the warning signal when the battery level is low, your notebook goes into hibernate mode.

Warning!

Never remove the battery while the notebook is switched on or if the notebook has not yet gone into hibernate mode, as this may lead to loss of data.

Power Management

Your notebook offers automatic and modifiable power saving functions that you can use to maximize battery life and reduce overall operating costs. The power saving modes are known as sleep mode and hibernate mode.

Sleep Mode (⇌

When in sleep mode, the contents of the RAM of your notebook are preserved while practically all other components of your notebook are shut down, reducing your power consumption to a minimum. By pressing any key on the keypad, you can bring your notebook back to the fully operational state. You will restart at precisely the line in which you were working prior to the interruption. The computer takes less time to go into and come out of sleep mode, but uses more power than hibernate mode.

Hibernate Mode (⇌

The hibernate mode is an alternative to a complete shutdown of the notebook. In this mode all data from RAM (system and graphic data) are copied to the hard disk as a file. As soon as the data has been safely saved, the notebook powers down. When the notebook is switched on again, this file is written back to RAM by the BIOS. In a few moments the notebook is in the exact state as when it was last used. If while working on a document the notebook is closed (assuming the correct ACPI setting), the notebook saves the data in RAM for you automatically. You will restart at precisely the line in which you were working prior to the interruption. The computer uses no power while it is in hibernate mode, but it takes a little longer for the computer to go into and come out of hibernation compared to sleep.

Display

Unlike a normal monitor, the TFT display does not produce either radiation or flicker.

Opening and Closing the Display

The display is locked by means of a special construction of the display hinge, so that an additional lock is not necessary.

1. To open, lift the display with your thumbs and index finger and position it as desired.

Warning!

Do not try to forcibly open the display.

The opening and closing of the display can be assigned various functions via the Power management feature.

Screen Resolution

The integral screen has a native resolution of **1280 x 800** pixels. If you change to a presentation with different characteristics in the Windows “**Personalization**” Help Program, the display will not appear on the whole area of the screen, among other effects.

Using a higher resolution can lead to distortion of the display, especially with text. Using a lower resolution may cause the display to use only a portion of the screen area.

You will adjust the presentation to the mode supported with the Windows “**Personalization**” Help Program.

Replacing the cover

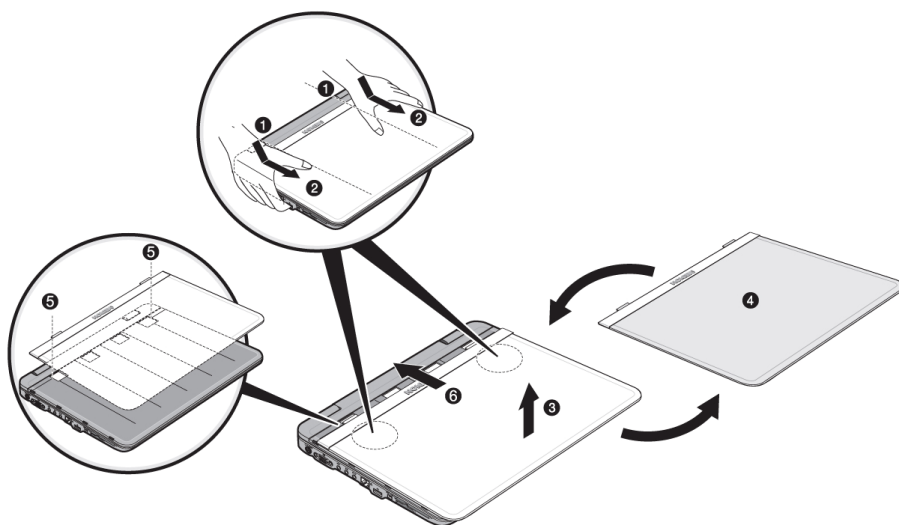
You have the possibility of replacing the cover of the display, in order to give your notebook an individual touch. You can order the respective covers at www.medion.com/individual. Please follow one of the following instructions.

Note

Make sure that the notebook is neither switched on nor connected with the mains adapter, **before** replacing the cover.

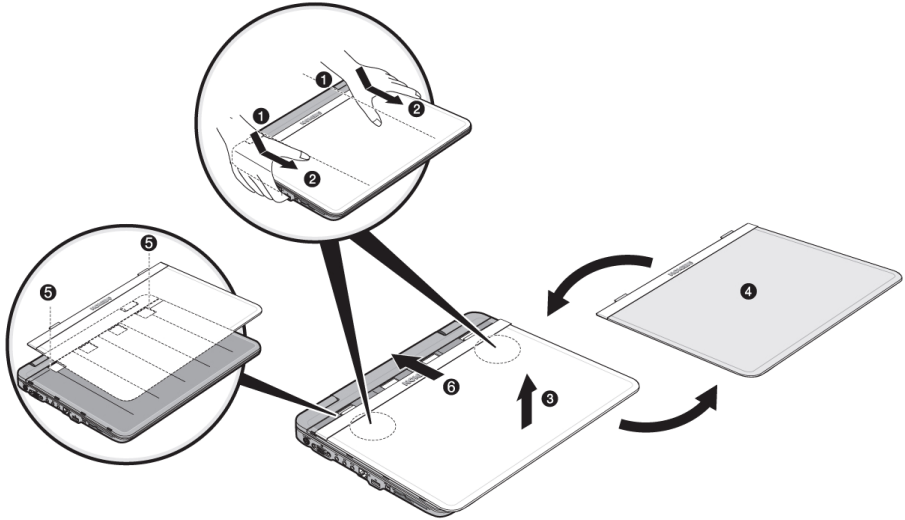
Instruction 1 for replacing the cover:

1. Use both hands to unlock the cover at the level of the hinges.
2. Slide the cover off the notebook and replace it with the new one.
3. Align the new cover to the notebook strip and push it carefully back to the starting position, until it engages.



Instruction 2 for replacing the cover:

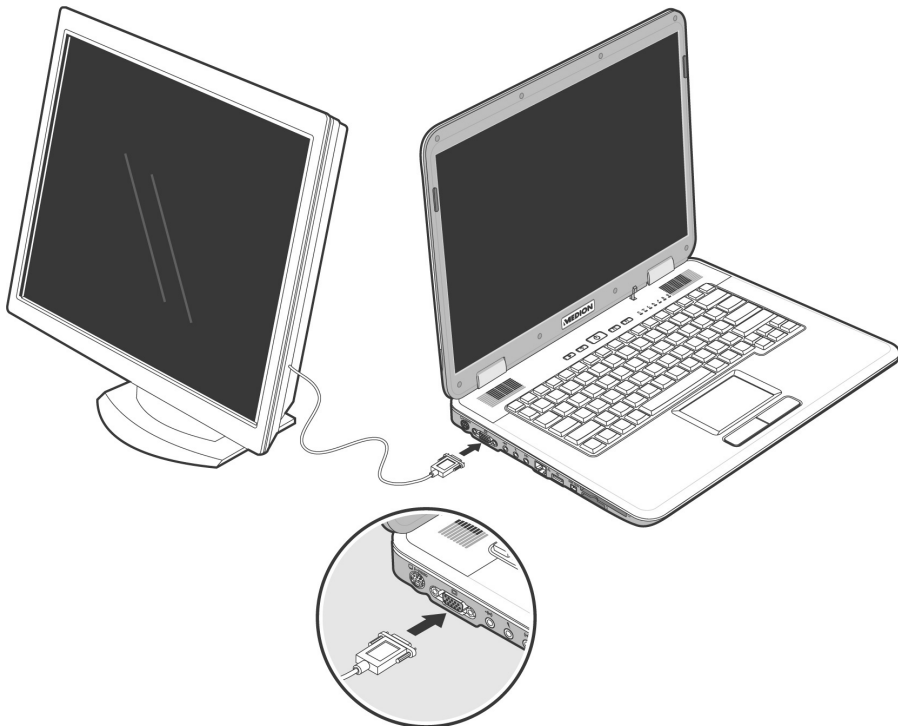
1. First, loosen one side of the cover with slight pressure, until the first lock can be seen easily.
2. Now, loosen the other side of the screen, also with slight pressure.
3. Now, push the cover from the notebook and replace it with the new one.
4. Align the new cover to the notebook strip and push it carefully back to the starting position, until it engages.



Connecting an External Monitor

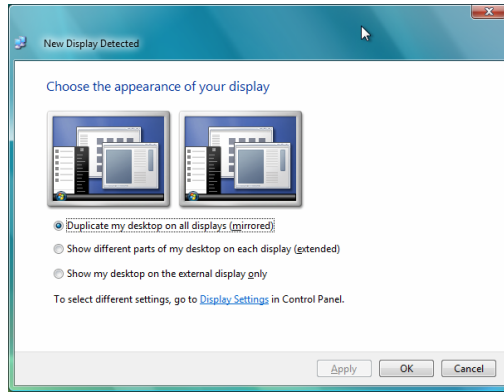
The notebook has a VGA port (**11**) for connecting an external monitor.

1. Shut down your notebook.
2. Connect the video signal cable of the external monitor to the VGA port of the notebook (**11**).



3. Connect the external monitor to the electrical socket and power it up.
4. Start your notebook.

The external screen will be determined after the operating system has been loaded. The following Window will appear and various possible presentations will be offered to you:



Duplicating the Desktop

This mode duplicates the display of the Notebook on the external monitor.

You will switch between the following combinations with the help of the **Fn + F3** key combination:

- Only Notebook (1 x Fn + F3)
- Only external monitor (2 x Fn + F3)
- Notebook + external monitor (3 x Fn + F3)

Note

The external monitor should support the **same screen resolution** as your notebook (**1280x800**), because it is possible to carry out the Cloning Mode otherwise. You will have to adjust the resolution of the notebook to the external monitor under **Display Settings**, in order to be able to carry out the **Fn + F3** command, if your external device does not support the respective resolution.

Extending the Desktop

An empty Desktop will be displayed on the second [external] monitor in this mode. Windows from the first screen can be shifted to the second one and vice versa.

This option does **not** support the key combination **Fn + F3**.

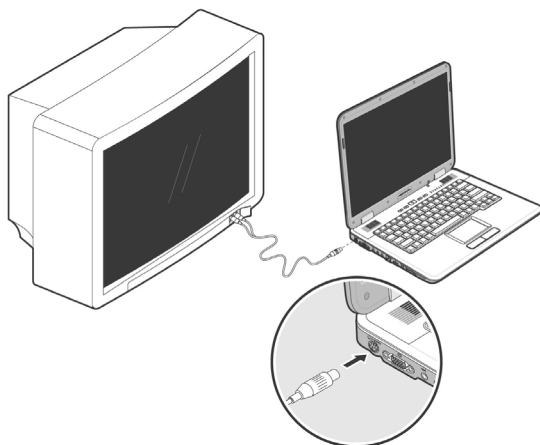
The screen resolution and the colour quality of the individual display devices can be set under "**Control Panel** ⇒ **Personalize** ⇒ **Display Settings**".

Connecting a TV

The Notebook has a port **(10)** for connecting a TV. To connect and configure the Notebook for a TV:

This option is supported by the **Fn + F3** shortcut.

1. Shut down your notebook.
2. Connect the signal cable of the TV device to the S-video connection **(10)** of the Notebook.



3. Connect the TV device to the network and switch it on.
4. Switch on your notebook and boot it properly.

You will be able to switch between the displays with the **Fn + F3** shortcut. Proceed as in the case of an external monitor here.

Note

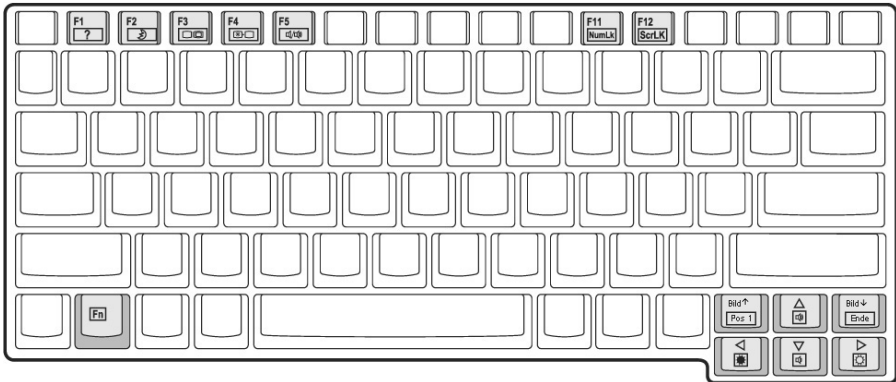
If the option **Extend the desktop onto this monitor** in the program **Personalization** ⇒ **Display Properties** is activated, then it must be deactivated first in order to change the display to the TV set.

Data Entry

The Keyboard

By dual assignment of certain keys you have the same range of functions available to you as with a normal Windows keyboard. Some functions are input using the **Fn** key, which is normal on notebook computers.

Notebook-Specific Key Combinations



Combination	Description
Fn + F1	Help A list of the combinations is displayed.
Fn + F2	Sleep Power saving functions. This key combination is set to Hibernate by default. To adjust this key to your own needs go to Personalization ⇒ Screensaver in Power Options .
Fn + F3	Display Toggles the display screen between internal monitor, external monitor and simultaneous display. Switch between the LCD display and the TV device in the case that a TV device is attached. Display of both at the same time is not supported.

Combination	Description
Fn + F4	Background lighting Switches the backlight off to save power. Pressing any key switches the backlight on again.
Fn + F5	Mute Switches the loudspeakers on / off.
Fn + F11	Num↕ Activates / deactivates the numeric keypad assignments (the corresponding LED will light up).
Fn + F12	RoI↕ Enables or disables the scroll function.
Fn + PgUp	Pos1 Executes function HOME.
Fn + PgDn	End Executes function END.
Fn + ▲	Increases the volume.
Fn + ▼	Decreases the volume.
Fn + ▶	Reduces screen brightness.
Fn + ◀	Enhances screen brightness.

Touch Pad

The touchpad is positioned in front of the keyboard.

The mouse pointer (cursor) follows the direction pre-determined on the touchpad by the movement of your finger in the normal mode.

Caution!

Do not use a ball-point pen or other object on the touch pad, as this could damage or cause a malfunction of your touch pad.

Below the touch pad are the left and right mouse buttons which can be used as on a normal mouse.

You can also perform a direct click or double click using the touch pad by tapping the surface briefly once or twice.

In the Windows® Control Panel you will find a number of useful settings that will make using the touch pad easier.

The Hard drive

The hard drive is the main storage medium combining large storage capacity and rapid data access.

The Windows operating system cannot use the full capacity of the hard drive, which means that there will be a difference between the capacity that the BIOS displays and what the operating system displays.

The hard drive contains the operating system of the computer, other application programs and backup files. These programs and files are pre-installed on your notebook, so you may note that some of the space on your hard drive is already taken.

Whenever the computer is accessing the hard disk, the corresponding LED illuminates.

Warning!

Never switch off the computer while the busy indicator is lit since this may result in loss of data.

If you are looking for a file on the hard drive and you know the name, go to Search on the Start menu to find the file. Following is some general information on where you might find some common files.

Usually your hard drive is divided into several partitions, as shown below. The partitions of your hard drive may vary from what is shown here.

BOOT	C:	Windows Software programs Your documents
RECOVER	D:	Drivers for internal Notebook components Installation files for software that came with your Notebook Restore software

Important Directories

The most important directories preinstalled on your notebook are shown below. These directories may vary from what is shown here.

Warning!

Do not delete or modify these directories or their contents since data could be lost or the functionality of the system could be at risk.

Also pay attention to this:

You will no longer be able to carry out the recreation of the supply status by means of the Support Disc (⇒ p. 84), if you have converted the Recovery Partition into a NTFS file system.

C: This is the main hard disk drive partition for your notebook. It is where your program files, settings, and documents are stored, as well as files necessary for running Windows.

C:\Program Files

Includes files belonging to software programs.

C:\Windows

The main directory for Windows.

D:\Driver

Drivers for internal notebook components.

D:\Tools

Includes installation files for software that came with your notebook.

D:\Recover

Includes the files needed to perform a system restore.

The Optical Drive

Loading a Disc

Unlike optical drives of desktop PCs optical drives of notebooks retain discs with the help of a locking mechanism.

When inserting the disc you should take care to push the disc right **onto the locking mechanism** so that it can lock in position.

Note

Do not place protective foils or other stickers on your discs. To avoid damage to your drive, do not use deformed or damaged discs.

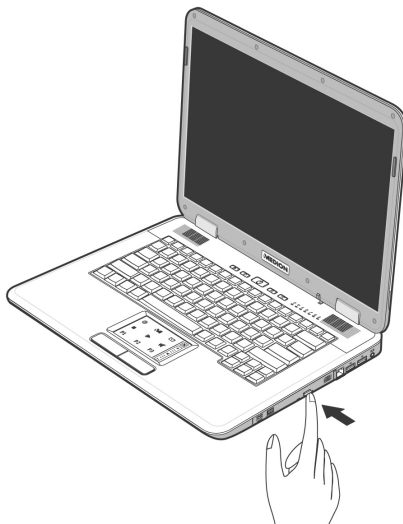
Warning!

Do not use scratched or dirty discs, discs with pieces broken off or discs of poor quality. Because of the high speeds in the drive the discs might break and damage your data as well as your drive. Examine the discs before you enter them. If damage or dirt is visible, you should not use them. Damage caused by faulty media is excluded from warranty and their repair must be charged.

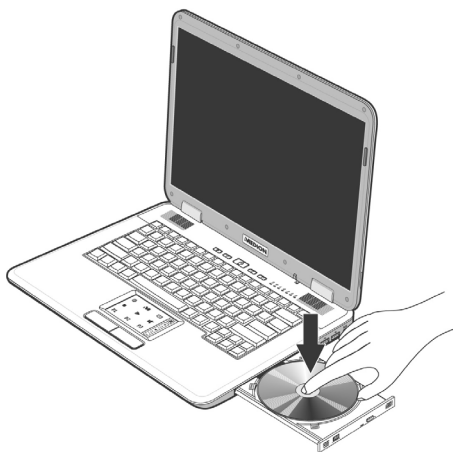
Warning!

The disc can be damaged when the drive drawer is pushed in, if it has not been positioned on the support correctly.


1. Press the eject button at the optical drive to open the tray.



2. Pull the tray out completely with care.
3. Remove the disc from its case, without touching the unprinted side if possible.
4. Place the disc on the tray so that it lays flat with the label facing upward and gently push the tray in to close it. The disc will now lie flat on the tray and will engage onto the disc holder audibly.



5. Test that the disc is able to turn freely and then push the tray back into the optical drive carefully.

The '**E**' drive letter will have been allocated to your optical drive in the delivery status. You will have easy access to your files on your disks with Windows Explorer (**Computer**). Start the **Computer** Help Program by means of the Desktop link or by pressing the Windows key  and the '**E**' key at the same time. Open Windows Explorer by means of **Start** ⇒ **All Programs** ⇒ **Accessories**.

The pre-installed media reproduction will be used automatically during access to DVD videos (or audio and video files on normal data CDs).

6. Press the eject button if you want to remove a disc.

Warning!

While the notebook is accessing the optical drive the media activity indicator is lit. Do not try to remove the disc from the drive while this LED is lit.

Emergency Ejection of a Blocked Disc

If the tray fails to open automatically, then the tray can be opened manually provided there is an opening for emergency ejection.

Restart your notebook and if the tray is still locked proceed as follows:

1. Shut down Windows and switch off your notebook.
2. Insert a long thin object (like a straightened paper clip) into the emergency ejection opening until you feel resistance.
3. Press lightly and the tray will open.
4. Remove the disc and restart the notebook.

Playing Back and Retrieving Data from Discs

Your notebook is able to playback and to retrieve Audio CDs, DVD Movies and Data discs.

After loading the disc your operating system will open a selection window with different options for playback. Normally there are various programs at your disposal.

If your operating system doesn't open the selection window you still have the possibility of the access via the "**Explorer**" or "**Computer**".

Regional Playback Information for DVD

The playback of DVD movies includes the decoding of MPEG2 videos, digital AC3 audio data and the deciphering of CSS protected contents.

CSS (sometimes called copy guard) is the name of a data protection program incorporated by the movie industry as an action against illegal copies.

Among the numerous regulations for CSS licensees the most important ones are the country specific playback restrictions.

In order to facilitate the geographically restricted release of movies, DVD titles are released for certain regions. Copyright laws require the restriction of each DVD movie to a certain region (usually the region, in which it is sold).

DVD movie versions can be published in several regions but the CSS regulations require that each CSS decipherable system may only be used in one region.

Note

The decoding software included with your Notebook may be changed for regional DVD decoding **up to five times**, after which the drive will only play DVD movies for the region setting last entered. Changing the region code after that will require factory resetting which is **not** covered by warranty. If resetting is desired, shipping and resetting costs will be billed to the user.

Subjects Concerning the CD/DVD-Rewriter

This Section only relates to devices that have been supplied with a CD-RW, a combination drive or a DVD-RW drive.

First of all, you receive information on the so-called **blank discs**.

Recordable/Rewriteable Discs

Normal Discs are pressed from a digital, glass master and then sealed. In the case of blank disc, the information is burnt onto the disc with the laser of the Rewriter. Therefore these discs are more sensitive than normal discs.

Please avoid the following when using recordable/rewriteable discs - especially blanks - that have never before been used:

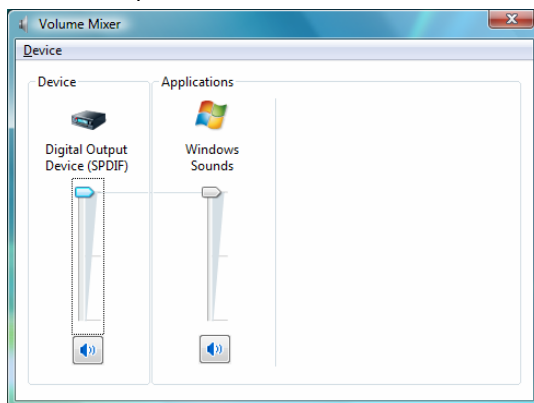
- radiation by direct sunlight (UVA/UVB)
- scratches and damage to the disc surface
- extreme temperatures

The Sound Card

Your notebook has an integrated stereo sound card (on-board) with 16-bit and 3D spatial sound effects (3D). The sound card is compatible with the industry standard Sound Blaster and Microsoft Sound System Version 2.0. This guarantees optimal support for all popular programs and games. If you wish to alter the base volume, click on the loudspeaker symbol in the task bar.



Click on **Mixer**, in order to open the volume mixer.



By using the keys **Fn + ↑** and **Fn + ↓** you have the possibility to regulate the volume.

External Audio Ports

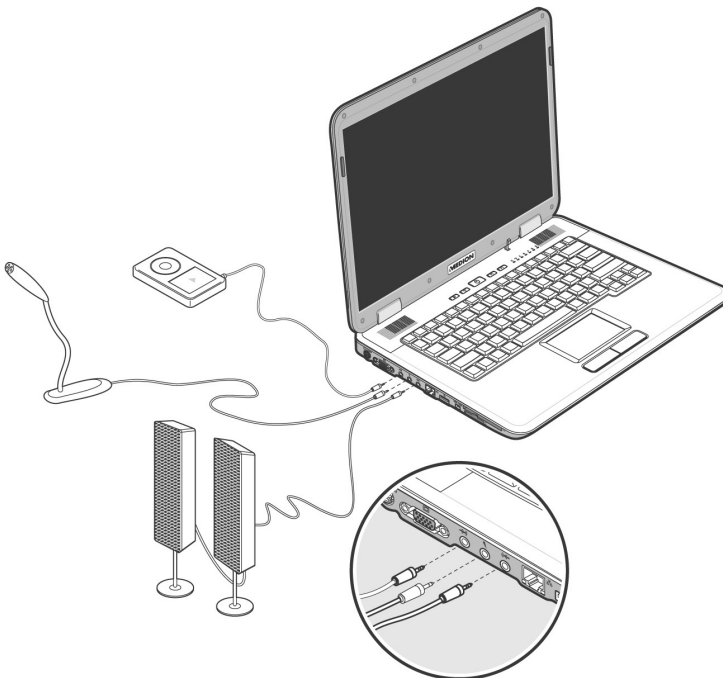
Your notebook has a loudspeaker, so you can always playback sounds without additional equipment. The use of the external connections gives you a good opportunity to connect your notebook to external devices.

Caution!

The use of earphones with a high volume can lead to lasting damage to your hearing. Set the volume to the lowest level before reproducing any sound. Start the sound reproduction and increase the volume to the level that is comfortable for you.



It can cause damage to the hearing ability of the listener if a device is operated through earphones with an increased volume for a long period.



<p style="text-align: center;">Line In (12)</p>	<p>For reception through an external source of sound. For sound reproduction with a surround system for speakers back.</p>
<p style="text-align: center;">Microphone In (13)</p>	<p>For recording via an external microphone. For sound reproduction via an external surround system for external center / subwoofer.</p>
<p style="text-align: center;">Audio Out / Digital Audio Out (S/P-DIF optical) (14)</p>	<p>For sound reproduction with an external surround decoder via an optical cable (available separately at a specialist shop). For sound reproduction via external stereo equipment such as loudspeakers (active) or headphones.</p>

By using the external connections you have the possibility to connect your notebook with a 5.1 surround system.

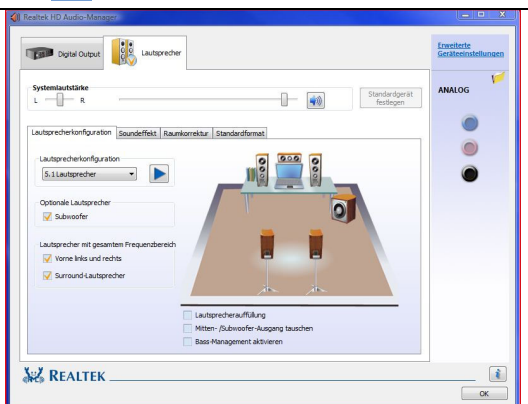
The bundled software allows you to make the necessary settings:

1. Click the following symbol in the taskbar:



The help program for the audio configuration is now invoked. A large number of settings can be carried out with this.

It is also used to set the **loudspeaker configuration** you are going to use for the surround sound.



You have the possibility to select between the **following** configuration modes:

- stereo*
- quadraphonic
- 5.1 loudspeaker

* Your notebook is factory set to **stereo** mode.

Modem

The built-in modem is able to receive data according to the ITU standard for V.90 transmissions with up to 56 Kbit/s. Since the power output of modems is restricted due to the regulations of some telecommunication providers, the possible maximum download speed can be restricted. The actual speed may be dependent on the online conditions and other factors.

Data sent from the user to the server are transmitted with 31.2 Kbit/s. Prerequisite for this high speed reception is an analogue telephone line compatible with the V.90 standard and a corresponding compatible Internet provider or company-owned host computer.

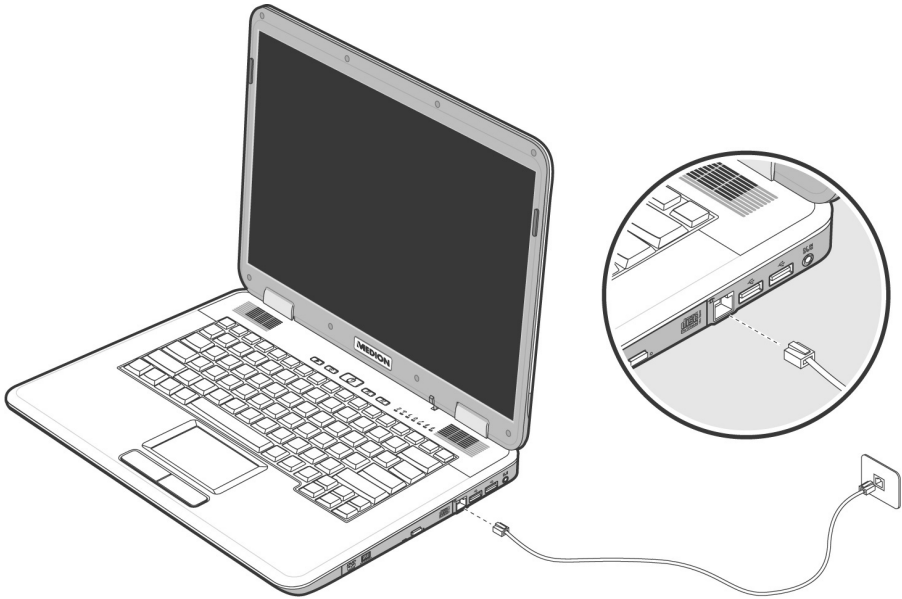
The modem is fitted with an RJ-11 interface, into which a standard telephone lead can be plugged.

Warning!

Use only with an analogue telephone line. The modem cannot withstand the voltage levels of digital telephone systems such as PBX or lines such as ISDN or Broadband services. (see safety instructions on page 9).

Modem Port

1. Insert one end of the RJ11-connection (telephone plug connector) into the modem/network interface (24) and the other into an analogue telephone socket that is easily accessible.



Note:

Do not place the notebook in Hibernate (or Sleep) mode if you are connected to your Internet provider, since this will cause the modem connection to be lost.

The Network

What is a network?

A network means connecting your notebook to one or several other computers. Users can transfer data between computers and share resources such as printers, modems and hard disk drives.

Here are some practical examples:

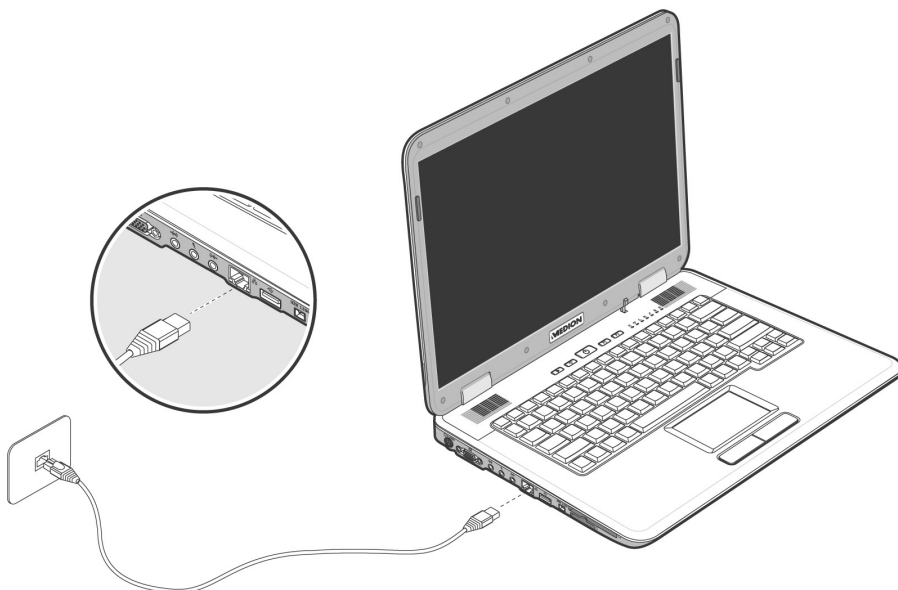
- You can exchange E-mail and manage appointments in an office.
- Users can share a printer in a network and save their data on a central server.
- Users can share one modem among computers for Internet access.
- Two or more computers can be connected to play network games or share data.

Ethernet-Network

If your notebook has an Ethernet connection, you can use this to connect to a network.

The following explanation refers to notebooks with a network connector.

Connect one end to the RJ45 connection (Western plug) at the network interface of your notebook (**15**) and the other to another PC or a hub/switch.

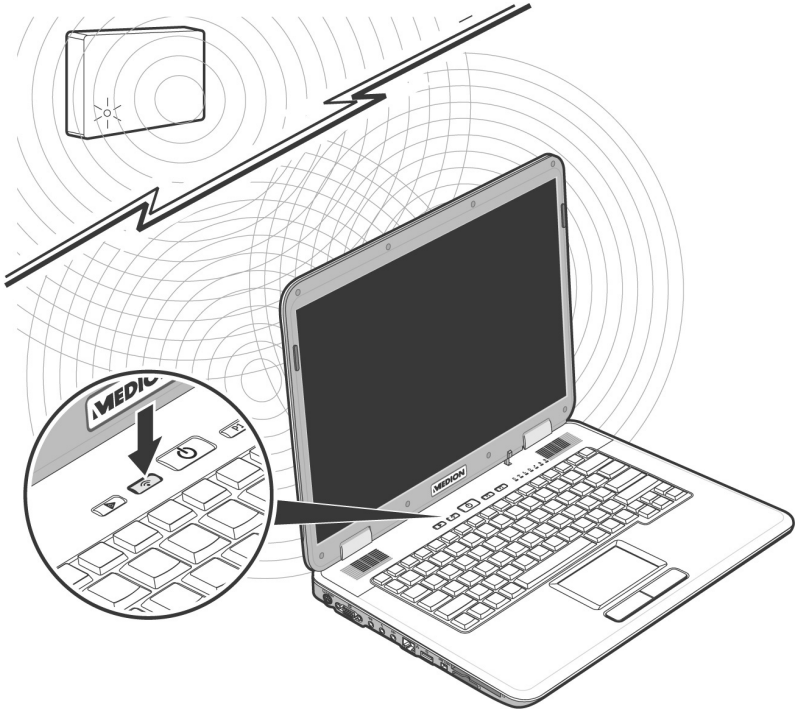


The Windows Help and Support Centre offer extensive information about networking your Notebook. You can access this information by clicking on **Start**, then **Help and Support**.

Wireless LAN

Wireless LAN is an optional feature. This function allows you to create a wireless network link with an access point or directly with another wireless-enabled PC.

Using the Quick launch button you can enable or disable the wireless LAN function. A corresponding LED will light.



Warning!

Make sure the Wireless LAN option is switched OFF in any environment where it might interfere with critical and sensitive devices, e.g., on aircraft, in hospitals and other medical centres, etc.

Conditions

An access point is a wireless transmitter that communicates with your notebook and controls access to the network connection (e.g., a home network or a broadband connection such as DSL). Wireless access points are often found in offices, airports, universities or Internet cafés. They offer access to networks or to the Internet. **Access authorizations** are normally needed. A fee may be required to use a public access point. To set up a wireless network to share Internet access, files, and printers at home, you will need an access point, a router, and a broadband (DSL or cable) modem. Some access points can also serve as a router and/or a broadband modem. Check with your retailer or Internet Service Provider to find the best solution for your needs. A link to another computer with wireless LAN functionality can also be created **without an access point**. This will allow you to share files, but you will need an access point and a router to share an Internet connection. The wireless network link works according to standard **IEEE 802.11g** which is also compatible with the IEEE 802.11b standard. The standard 802.11a is **not** supported. If encrypted transmission is used, this must operate according to the **same principle on all devices**. Encryption is a method of protecting the network from unauthorized access. The transmission speed (max. 54 Mbp/s) can vary according to the **distance** and **loading** of the partner.

Troubleshooting within the Network



Why does an error message appear when I click on the network environment?



The **computer name** must be unique on the network and may not be the same as the **task group**.



It appears that the network boards are unable to communicate. What might be the problem?



Maybe one of the used network boards works with a **different speed** (e. g. 10 instead 100 Mbit/s) and your network computer is unable to recognize this. If necessary, set the network driver to the compatible speed.

If two PCs should be linked you require a **cross-link** cable, otherwise use a **patch** cable.

In addition, check the **protocols** and the **configuration**.



The data transmission is incorrect or very slow. What might be the problem?



Maybe you have the wrong cable (UTP / CAT3 or lower) or the problem is the proximity of a power cord or another source of interference.

The Multimedia Card Reader

Memory cards are media that are being used for a variety of purposes, especially in digital photography. They are increasingly replacing the floppy disk. The form and capacity of a memory card can vary according to the manufacturer.

Your notebook supports the following formats:

- MMC (MultiMediaCard)
- SD (Secure Digital)
- Memory Stick / Memory Stick Pro

When inserting memory cards, ensure that the contacts are facing the right way. See table below. Incorrect insertion of a card can cause damage to the card reader and/or the card.

Card type	Contacts
SD (Secure Digital)	pointing downwards
MMC (MultiMediaCard)	pointing downwards
Memory Stick	pointing downwards
Memory Stick Pro	pointing downwards

Inserting Memory Cards

Note

Memory cards can only be installed in **one direction**. Refer to the instructions on the previous page.

Push the memory card into the slot.

Removing Memory Cards

To remove the SD/MMC-cards or memory sticks pull it out and remove it.

Express Card/54

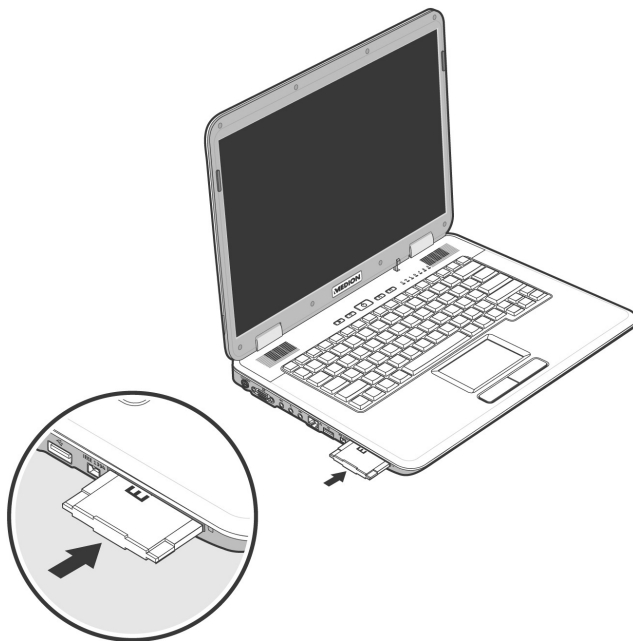
Your notebook supports the Express standard.

Both Express/34 and Express/54 cards (the naming refers to the sizes of the cards) are available on the market. Your notebook supports both card formats.

Installing Express Card


Note

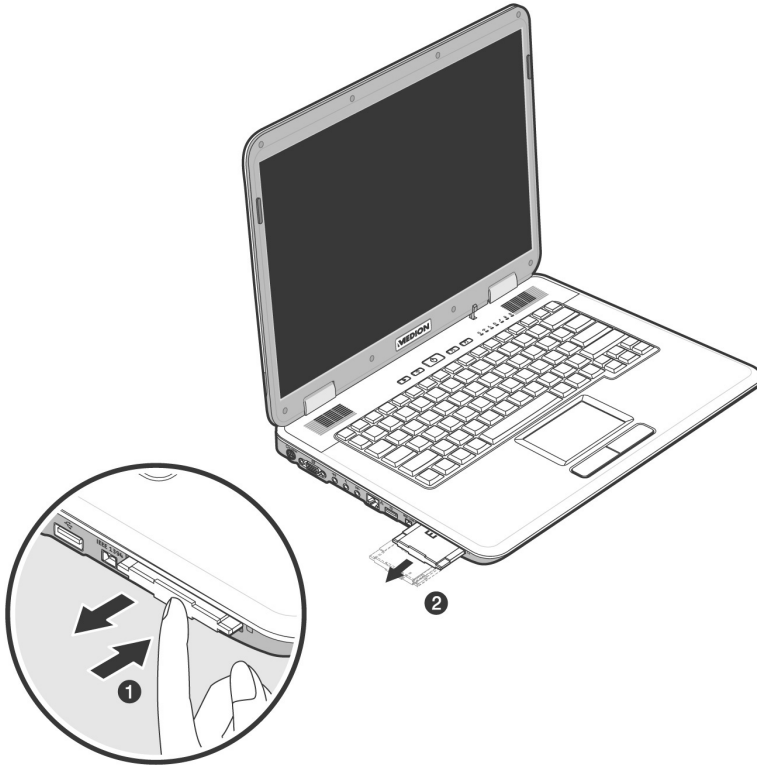
Please always read the instructions that come with your Express card before installation. Remove the dummy card from the slot before installation. Replace the card to protect contacts against dirt if the Slot is not used.



Removing Express Card

Please take note of the following before removing the Express card:

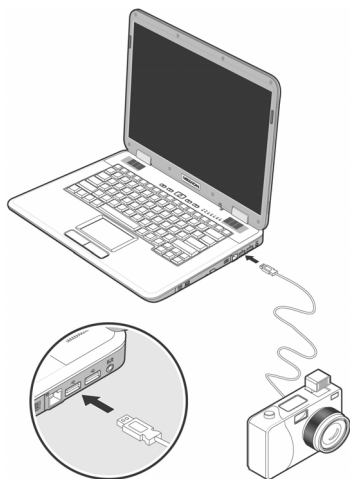
- Terminate the program which you used with the card.
- Left-click on the icon Safely Remove Hardware  in the taskbar, select the card and click on **Stop**.



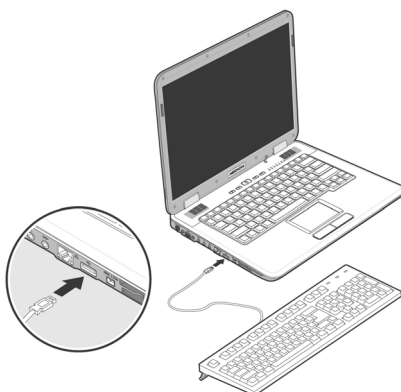
In order to remove the card, first push it into the contact to unlock it. Pull the card from the bay and store it securely.

Universal Serial Bus (USB) Port

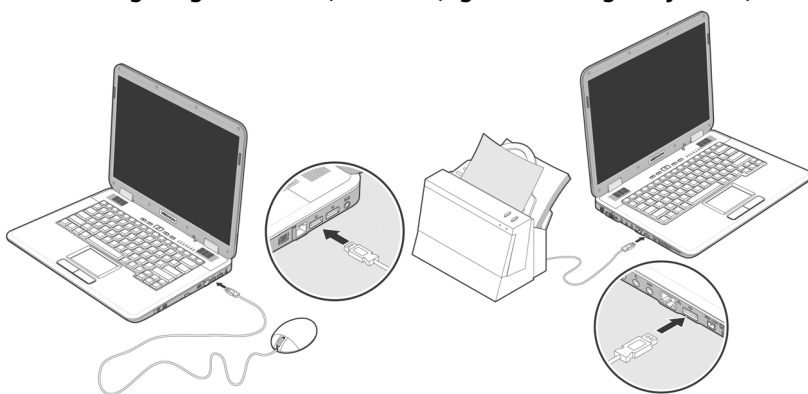
USB ports provide an easy way to connect many peripheral devices to your Notebook (**16**). You can use any USB device with any USB port. Your notebook will have **3 USB 2.0 connection sockets** (USB 1.1 compatible).



(fig.: connecting a digital camera)



(fig.: connecting a keyboard)



(fig.: connecting a mouse)

(fig.: connecting a printer)

Some USB devices require that you reinstall software drivers when you connect the device to a different USB port than the one originally used. This can be avoided by always using the device with the same USB port.

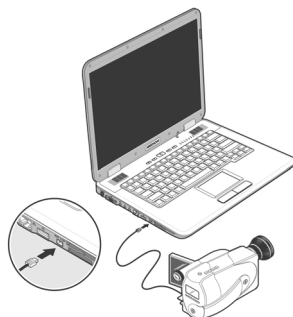
Devices connected directly to the USB bus should not draw more than 500 mA. Should the devices need more power than this, it will be necessary to provide a powered hub. The data transfer speed is 1.5 Mbit/s or 12 Mbit/s, depending on the device connected.

Note

Some USB devices require that you reinstall software drivers when you connect the device to a different USB port than the one originally used. This can be avoided by always using the device with the same USB port.

IEEE 1394 (FireWire)

The IEEE 1394 (also known as iLink® or FireWire™) port (17) provide an easy and high-performance way of connecting high-speed storage, imaging, and many new types of audio/video devices easily.



Application Options for IEEE1394

- Connection of digital devices of the entertainment industry, such as set-top speakers, digital video and camcorder, 'Digital Versatile Disk' (DVD), television etc.
- Multimedia applications and video processing.
- Input and output devices such as printers, scanners, etc.

Technical Specifications

- Depending on the application, the maximum data transfer is about 100, 200 or 400 Mbit/s, corresponding to a data throughput of up to 50 MB per second.
- The device can be plugged in or unplugged during operation (hot plugging).
- The standardised cord ('Shielded Twisted Pair' -STP) includes 6 strands. Two lines are live (8V up to 40V, 1.5 A max.) and can be used as an external power supply. The four signal lines transfer data or control information. Some devices do not require a power supply via the cord so that four pole plugs are used.

Securing the Notebook

Your new Notebook will make software and hardware solutions to unauthorized access available to you.

Startup Password

You can protect your notebook against unauthorized use with a switching on password. Then, an invitation to enter the password will appear on the screen when the notebook is switched on.

The password will be set up in **BIOS**.

Warning!

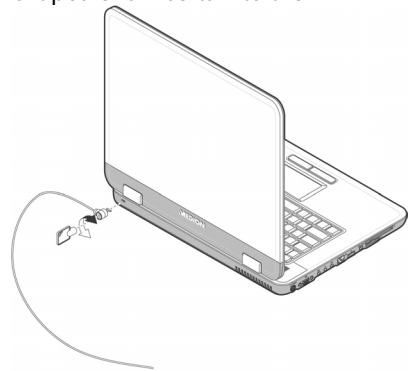
Keep your password in a safe place. You will not have any possibility of deleting your password if you forget it. Contact your Customer Service in that case.

You can also use the security options of Windows Vista™, in order to protect your data against unauthorized access. You will find further information in the chapter “**Data and System Security**” starting on page 80.

Using a safety lock

You can prevent theft by using a so called **Kensington lock**, which can be bought at your local retailer.

The cable wraps around an object and the “T” shaped end inserts into the Kensington lock port and a key or combination dial is used to secure the lock in place. Please keep your key at a safety place.



Software

There are many kinds of help and information for using your Notebook. This section tells you where to get help with the Microsoft® Windows® Vista™ operating system, software programs, and your notebook.

Getting to Know Windows Vista™

Windows Vista™ offers different options to understand its operation. We will mention only a few of those options here:

Windows Vista™ – Quickstartguide

This Handbook will give you a brief overview of the operation of your operating system.

The following themes are dealt with in it:

- Initial steps
- The Welcome Center
- Innovations
- Help displays

We recommend this reading matter to beginners and those switching from other versions of Windows.

Windows Vista™ – Help and Support

An answer to almost every question can be found in this program.

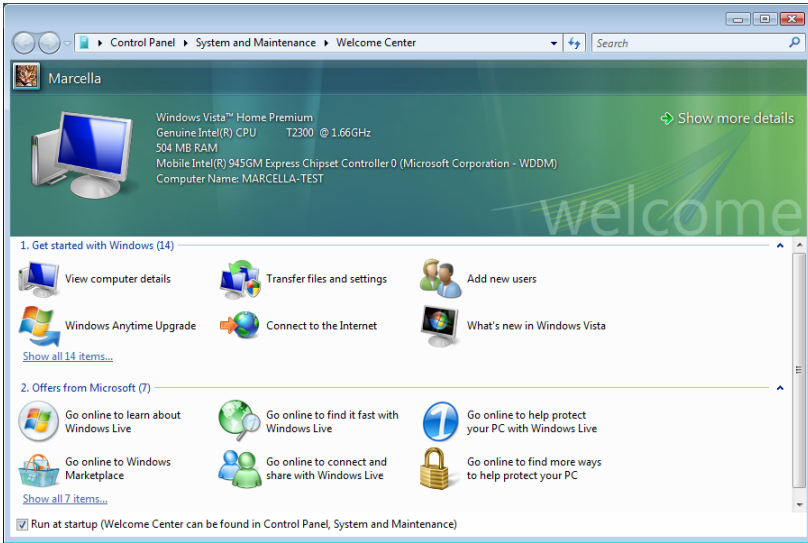
This help function fully covers the Windows operating system.

It is helpful for both beginners and professionals. You can print or bookmark the information, which is categorized into topics. You start like this:

1. Click on **Start** 
2. Now select **Help and Support** 

Windows Vista™ – Welcome Center

You will see the Welcome Center at the first display of the Windows Vista™ Desktop. This contains useful links that will make it easier for you to start using Windows.



It is the aim of this feature to enable both beginners and experienced users to make additional setting for the optimal use of Windows Vista™ after first bringing the Notebook into operation.

The Welcome Center has been subdivided into many small groups of subjects, so that the user will have the possibility of adjusting the content optimally to his or her knowledge. There are some of the links in the following:

- View computer details
(Find information about you computer, the type of your graphics card and the Windows Vista™ version here)
- Transfer files and settings
(Transfer data and settings of your old Notebook with this)
- Add new users
(Administratate and open user accounts for each user of the Notebook with this)
- Windows Anytime Upgrade (WAU)
(Carry out upgrades to higher versions of Windows Vista™, in order to be able to use the expanded digital features, through this)
- Connect to the Internet
(Configure your internet access with this)

- What's new in Windows Vista™
(Learn how Windows Vista™ is different in comparison to older versions)
- The use of the email program
- ...and much more!

Use the Welcome Center to understand your Notebook better and in order to be able to use it optimally. It will also serve you as an additional source of information for recognizing and removing potential problems.

You will call up the Welcome Center as follows, if you closed it after the start:

1. Click on **Start** 
2. Select **Welcome Center**  in the Program List.

Windows Vista™ – User Account Control

The User account control contributes to the prevention of unauthorized changes to the Notebook.

A window with the message **“If you started this action, continue.”** will appear as soon as you carry out an unauthorized change.

- Click on **Continue**, in order to continue the procedure.
- Click on **Cancel**, in order to end the procedure.

Installation of Software

Note

If your operating system is configured that the installation procedure accepts only signed drivers (default) and software an information screen will appear.

The software included in delivery is **already pre-installed** in the factory.






It happens that during installation procedure important files can be changed or even cancelled. To avoid eventual problems in using older files after installation, make sure to safeguard your hard disk.

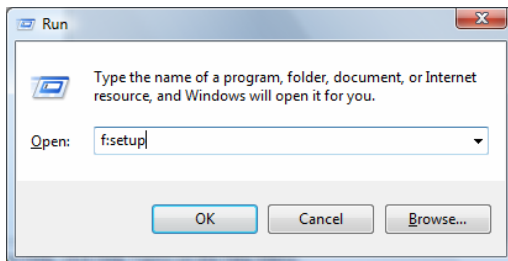
Please follow the instruction of the software vendor. We will describe a typical installation. Once you insert a disc, the installation menu is started automatically.

Note

If the automatic start does not work, it is likely that the so-called **Autorun** function has been deactivated. Read the respective chapter in Windows Help on how to activate this function.

An example for the manual installation without the autorun function:




1. Click on **Start** 
2. Click on ► **All Programs**.
3. Open the **Accessories**  program point.
4. Select the item  **Run**.
5. Now enter the letter of the CD-ROM drive followed by a colon and the program name setup:



6. Click on “**OK**”.
7. Follow the instruction given by the program.

Software De-installation

In order to remove installed software from your Notebook, follow the next steps:

1. Click on **Start** .
2. Click on  **Control Panel**.
3. Then select the **Programs**  option.
4. Select the respective program, start the de-installation and follow the instructions on the screen.

Windows Activation

Microsoft is committed to the protection of intellectual property rights and the reduction of software piracy. Therefore Windows Vista™ contains software-based product activation technology. Your copy of Windows Vista™ has already been **activated for your Notebook**.

Product activation is needed if some components of your Notebook have been replaced or you use a non-authorized BIOS. If necessary you can activate Windows Vista™ as often as requested.

You will probably need to activate Windows Vista™ by telephone even if Internet Activation is available. This is due to the pre-activated SLP version which runs with a special Product-ID. However, activation needs your unique Product ID which can be found on the **Certificate of Authenticity** sticker on your Notebook housing. When you call, please inform your agent that you are running an OEM-(SLP) version of the software.

Product activation on your Notebook

In few cases it may still be required to activate Windows Vista™. If activation via the **internet** is acknowledged with an error message you should perform the following steps.

1. Please select the **telephone activation** and click until the related screen appears.
2. Now click on **Change Product Key**. A new window appears. Enter the product key. This is located on the **Certificated of Authenticity (COA)**, on the computer's casing.
3. Acknowledge your entry and follow the instructions on the screen. Notify your Microsoft consultant, if necessary, that you have an OEM license.

The BIOS Set-up-Program

In BIOS setup (Basic Configuration) there are a number of configurable parameter settings available for your notebook. For example, you can change the operating mode of the interfaces, security features or power management.

Warning!

The notebook is factory pre-set to guarantee optimum operation. Only modify the parameters if necessary and if you are familiar with the configuration options.

Running the BIOS Set-up

You can only run the BIOS configuration program at system start-up. If the notebook has already started, power it down and then up again. Press the **F2** function key in order to start the BIOS-SET-UP.

BullGuard Internet Security

The BullGuard Internet Security Package is a combination of the currently most up-to-date PC security technologies on the market and thus offers you 24-hour optimum protection.

BullGuard is already installed, so that additional installation will not be necessary. If you nevertheless have to carry out an installation (e.g. after system restoration), you will find the software package on the application/support disc supplied with the machine.

BullGuard Internet Security consists of the following security components:

- **Antivirus**
The centrepiece of any serious PC security application, the Antivirus application screens your e-mails, and scans your hard drives for viruses and malware. The BullGuard Antivirus combines the highest update frequency in the business with a no-nonsense user-interface.
- **Antispyware**
BullGuard Antispyware protects your PC from all known kinds of spyware and adware by searching and cleaning files, registry keys, processes and cookies, protecting you from identity theft and the loss of personal information.
- **Spamfilter***
The BullGuard Spamfilter will protect you from annoying spam and potentially costly phishing attempts - a key tool in keeping your Inbox free from unsolicited mail.
- **Backup***
Backing up your files has never been easier with both local and online backup. Not only can you customise the size of your online backup drive to suit your needs - once uploaded, you can access these files from any computer connected to the internet anywhere in the world!
- **Support***
BullGuard Support is a key component in all BullGuard products. Assistance with all security related questions available to all users directly from the application. No FAQ, no automated response – real people and live help.

* Information

The **Antispyware, Spam filter, Backup and Support** components will only be released at the free registration and will be deactivated after the expiry of 90 days.
Procure a BullGuard subscription through the internet link given below, in order to be able to continue to use this module.

The BullGuard Internet Security Package will be updated with the most up-to-date virus information for 90 days after the **free registration**.

The registration window will only appear after your notebook has been restarted. You will register by entering your email address and a password.

The antivirus software will continue to run after the expiry of 90 days, but it will no longer be updated, so that your notebook will not be protected against new viruses.

The purchase of various subscriptions through BullGuard is possible in order to always receive the most up-to-date information and updates.

A subscription will be purchased on the internet and carried out without complications. An additional release or the entering of a licence is not necessary. Neither changes nor additional settings will have to be made.

The release will take place automatically after the purchase of a subscription.

Read the information about this on the internet at:

https://www.bullguard.com/buy_new.aspx?

Chapter 4

First Aid

Subject	Page
FAQ.....	79
Data and System Security.....	80
System Recovery	83
Troubleshooting	85
Maintenance	88

FAQ – Frequently Asked Questions



Do I still have to install the enclosed discs?



No. Basically all programs are already preinstalled. The discs are only intended as backup copies.



What is the Windows activation?



Your operating instructions include a chapter about this subject.



When do I have to activate Windows?



Your software has been preactivated in the factory. An activation will only be required, if ...

... several components are replaced by others.

... you installed a new motherboard.

... a different BIOS version has been installed.

... you install the software to another computer.



How do I perform a data backup?



Make a backup and a retrospective backup of selected data on external media (CD-R), in order to become familiar with the technology.

A backup is unusable if you are not in a position to recreate the data, the medium (CD-R) is defective or is no longer available.



When is the recovery of the factory setting recommended?



This method should be chosen as the last resort. Read chapter **“System Restore”** concerning the possible alternatives.



Why is the boot partition missing when booting from the support/application disc?



The first partition is formatted with the file system NTFS. Compared to FAT32 this file system offers more security and a more efficient access. However, NTFS partitions can only be read from operating systems supporting this. This is not the case in the aforementioned disc.

Data and System Security

The programs described below are part of your Windows operating system. You will find additional information on these programs in the Windows Help file.

Data Security

Back up data regularly on external media such as a CD-R or CD-RW. Windows offers **Backup Status and Configuration**.

This program is found in **Accessories** ⇒ **System Tools** within the Start menu. You should make a backup disk with all your passwords and the operating system's original configuration.

Maintenance Programs

You can avoid some hardware and software errors with disk maintenance programs such as **Disk Defragmenter** and **Disk Cleanup**. The program **System Information** can also be helpful since it gives you detailed information about your system configuration. You will find these programs in **Accessories** ⇒ **System Tools**.

Password Reset Disk

To protect individual user accounts from complications resulting from lost passwords, users should create a password reset disk and keep it in a safe place. If the user should forget his/her password, the password can be reset with the password reset disk so that the user has access again to his/her local user account. Windows Help describes how to create a password reset disk.

Windows® Update

Windows Update is the online updating of Windows. Use Windows Update to download elements such as security updates, important updates, the newest help files, drivers and Internet products from the Internet.



The website is regularly augmented by new content, so that you can download the newest updates and error corrections at any time, to protect the notebook and guarantee its functioning.

Windows Update will search through the notebook and provide a list of individual updates specially for the configuration of your notebook.

Each update that Microsoft regards as important for the operation of the operating system, programs or hardware components will be classified as an “important update” and automatically selected for installation for you.

Important updates will be provided to remove known problems and to protect the notebook against known security risks.

Carry out four simple steps, to download the updates needed and to keep your computer on the current status of technology:

1. Click on **Start** .
2. Click on ► **All Programs**.
3. Open **Windows Update** .
4. Click on Check for update.
5. Click on **Add** to select the desired update and to add it to the updates to be installed, while you are searching through the available updates in each category. You can also read a complete description of each individual element by clicking on the **Read further** Link.
6. Click on **Check and install updates**, when you have selected all the desired updates, and then click on **Install now**.

Windows Update Information for Data Security

Windows Update needs certain information about the respective notebook, so that a suitable list with updates can be provided for you. This information will include the following:

- Version number of the operating system
- Version number of Internet Explorer
- Version numbers of additional software programs
- Plug & Play identification key of the hardware devices

Windows Update will stand up for the protection of your private data and will not record your name, address, email address or other forms of personal data. The information collected will only be used during the time that you are visiting the website. It will also not be stored.

System Restore

Windows Vista™ provides a useful function (**System Restore**) enabling the storage of the so-called **Recovery points**.

The system remembers the current configuration as a snapshot and returns to this, if necessary. The advantage is that an unsuccessful installation can be cancelled.

Recovery points are created automatically by the system, but they can also be set manually.

You can determine and configure yourself the maximum memory taken up by this. You find this program in the program file under **Accessories** ⇨ **System Tools**.

We recommend setting a **recovery point** before installing a new software or driver. If the system does not run stable any longer this enables you usually to return to a workable configuration without deleting newly created documents. In the next paragraph read your options for a repair of an incorrect installation.

Correction

Windows Vista™ includes various functions ensuring that the Notebook as well as the installed applications and devices work correctly.

These functions assist you in solving the problems which might occur by adding, deleting or replacing files required for the functionality of the operating system, the applications and devices. The recovery function or functions you use depend on the type of occurring problem or error. For detailed information refer to the Windows help.

System Restore powered by Symantec



If your system is not functioning properly and Windows Vista™ **System Restore** did not solve the problem, then you should use the Application Support Disc to restore your system.

Limits of the Recovery

- Changes made to the original configuration (RAS, Desktop or Internet settings) and installed Software will be ignored by this Recovery and will not be reloaded.
- Driver Updates or hardware installed by you will be ignored by this Recovery.

Warning!

All data on drive C will be erased. If necessary, backup all required data on drive D. (You **must** pay attention to the information of pages 4 and 80).

This recovery will reset your system to its **condition at delivery**. Printer installations or other additional software must be reinstalled.

Performing the Restore

1. First, please read the entire **System Restore** section of the Windows Help file.
2. Insert the Support-Disc and reboot the notebook.
3. Select the option „**Boot from CD-ROM**“.
4. Follow the instructions on the screen.

The Notebook will restart and will return to the state at delivery.

Troubleshooting

Localize the Cause

Errors can have simple causes, but sometimes they are caused by faulty equipment. We would like to give you some tips to help solve common problems. Should these instructions not lead to success, please feel free to contact us.

Check Cables and Connections

Visibly check all cables and connections. Should all lights be off, check whether all equipment is supplied with power.

- In battery mode, connect the notebook to the power adapter and ensure that the battery is charged up.
- If you are operating the notebook with the power adapter, check the electrical socket, power cord and all switches in the circuit of the electrical socket.
- Switch off the notebook and check all cable connections. Check the connections to peripherals. Do not exchange cables, even though they may look similar. The polarity in the cables may be different. When it is confirmed that the notebook has power and all connections are correct, turn the notebook on again.

Errors And Possible Causes

The screen is black:

- This error can have different causes:
 1. The operational display (On /Off switch) does not shine and the Notebook is in the swap file status.
Solution:
Operate the On /Off switch.
 2. The sleep display is flashing. The Notebook is in the sleep mode.
Solution:
Operate the On /Off switch.
 3. The background lighting has been deactivated with the FN+F4 shortcut.
Solution:
Operate any key to switch on the background lighting again.

The notebook switches itself off during operation.

- The accumulator could be empty. Connect the notebook by means of the network adapter and charge the accumulator.

The notebook cannot be switched on.

- Operate the notebook by means of the accumulator and check whether it is correctly inserted and charged.

Incorrect time and date display.

- Double click the time display in the task bar and set the correct values afterwards.

No data can be read from the optical drive.

- Check whether the disc is correctly inserted.
- Is the drive displayed in Explorer? If yes, test another disc.

The WLAN connection is not functioning.

- Using the quick launch button  you can enable or disable the wireless LAN function.

Additional Support

If the suggestions in the above section have not solved your problem, please contact customer care and we will attempt to help you solve the problem. Before you call, however, please have the following information available:

- How is your computer configured?
- What additional peripherals do you use?
- What messages, if any, appear on your screen?
- What software were you using when the error occurred?
- What steps have you already undertaken to solve the problem?
- Have you upgraded or removed drivers or hardware?
- Can you manually repeat the problem?
- If you have been given a customer number previously, please have this available.

Driver Support

This notebook has been extensively tested in our laboratories with a large number of compatible devices. It fulfils all required standards and complies with the standard “Designed for Windows”, which certifies utmost compatibility. However, the software drivers for individual components are updated from time to time. This is a regular process provided by the manufacturer to mend possible compatibility problems that may occur with components (e.g., programs or hardware) that were not tested at the time of your notebook’s manufacture.

Maintenance

Warning!

There are no user-serviceable or user-cleanable parts inside the notebook housing. Never open the notebook housing.

Following these measures can extend the lifetime of your notebook:

- Before cleaning, always remove the power adapter plug and all connecting cables.
- Only use a damp, lint-free cloth to clean the notebook.
- Do not use any solvents, corrosive or gaseous cleaning agents .
- Do not use CD-ROM cleaning discs or similar products that clean the lens of the laser to clean your optical drive.
- Dust or grease on the touchpad will impair its sensitivity. Remove dust or grease on the surface of the Touchpad with a strip of sticky tape.

Care of the TFT Display

- Always close the notebook when not in use. Avoid touching or scratching the surface of the screen as it is easily damaged.
- Make sure that no water drops are allowed to remain on the screen. Water can cause permanent discoloration.
- Clean the screen with a dry, soft, lint-free cloth.
- Do not expose the screen to bright sunlight or ultraviolet radiation.
- The notebook and its packaging are recyclable.


Transporting the Notebook

Please use the following guidelines when transporting the notebook:

- Switch off the notebook. This will prevent damage to the hard disk. When the notebook is turned off, the hard disk heads are moved into a safe area.
- Wait until the Notebook has reached ambient (room) temperature before connecting it to the power supply. Drastic variations in temperature and humidity can create condensation within the Notebook and may cause it to short-circuit.
- Close the notebook and ensure that the cover locks shut.
- Always use the notebook carrying case. This helps to protect the notebook from dirt, moisture, jolts and scratches.
- Should you need to ship your notebook, always use the original packaging and make certain the shipper knows the contents contain fragile electronic equipment.
- Fully charge your battery and any spare batteries immediately before a long journey.
- Enquire about the electricity and communication provision at the location before a journey.
- Acquire the necessary adapter for electricity or communication (modem, LAN, etc.), if necessary, before starting your journey.
- Put the battery into the packaging separately when despatching the notebook.
- It is recommended to send the notebook and all magnetic storage media (floppy disks, external drives) through the x-ray device (the device into which you put your bags), when you are passing through the baggage check at airports. Avoid the magnetic detector (the construction, through which you walk) or the magnetic rod (the manual device of the security personnel), because they could destroy your data, among other consequences.

Recycling and Disposal



Device 

At the end of its life, the appliance must not be disposed of in household rubbish. Enquire about the options for environmentally-friendly disposal



Batteries

Do not dispose of used batteries in the household rubbish! They must be deposited at a collection point for used batteries.



Packaging

To avoid damage during transport, the Notebook is stored in a packaging. Packaging is produced mostly from materials which can be disposed of in an environmentally friendly manner and be professionally recycled.

Should you have any questions concerning the disposal please contact your dealer or our service.

Batteries and Proper Treatment

Batteries may contain combustible materials. By misuse, this may cause battery **leakage, heat, explosion or ignition**, bringing about **injury or damage** to the device. Please observe strictly the following matters:

Warning!

There is a lithium battery on the motherboard. Lithium batteries are **hazardous waste** and need to be disposed of properly. If necessary, we will take back your used CMOS lithium battery.

- KEEP CHILDREN AWAY from batteries. If by any chance, the batteries are swallowed, consult a doctor immediately.
- DO NOT CHARGE batteries (except rechargeable batteries).
- DO NOT FORCIBLY DISCHARGE batteries.
- DO NOT SHORT-CIRCUIT batteries.
- DO NOT HEAT or DISPOSE OFF IN FIRE.

- DO NOT DISASSEMBLE or DEFORM batteries. Your hands and fingers may be injured, or the liquid of the battery may get into your eyes or adhere to your skin. If this happens, rinse with a large quantity of water immediately and consult a doctor.
- DO NOT expose batteries to strong impact by dropping or throwing the batteries.
- DO NOT reverse the positive (+) and negative (-) terminals to avoid short-circuit.
- Do NOT MIX used and new or different types of batteries together. Your equipment may not operate properly. In addition, the battery exhausted first may be excessively drained (over-discharged).
- REMOVE PROMPTLY the used batteries from the device.
- REPLACE ALL BATTERIES with new batteries of the same type at the same time.
- INSULATE THE TERMINAL parts with tape or the like at the storage or disposal of the batteries.
- DO NOT throw rundown batteries in the domestic refuses! Respect the environment and throw them in the specific containers for separate collection. If necessary, turn to your reseller or to our service assistance. Thank you!

Upgrades and Repairs

- Only a qualified Service Engineer should perform upgrades and repairs to your notebook.
- If you do not have the necessary qualifications, go to an appropriate Service Engineer. Please contact the Service Centre if you are experiencing technical problems with your notebook.
- Please contact our authorized Service Partners exclusively in the case of a necessary repair.

Notes for Service Engineers

- Before opening the housing, disconnect the notebook from all power sources and remove any connecting cables. If the notebook has not been disconnected from the power outlet before being opened, there is a danger of severe electric shock. There is also a risk of damage to the components.
- Internal components of the notebook may be damaged by electrostatic discharge (ESD). Perform system upgrades and changes in an ESD-protected work area. If no such work area is available, wear an antistatic wrist strap or touch a highly conductive metal object. Your service centre can repair damage sustained by inappropriate handling for a fee.
- Use only original spare parts.

Notes on Laser Radiation:

- Laser devices of Laser Class 1 to Laser Class 3b may be used in the notebook. Where the notebook housing remains closed, the device meets the requirements of Laser Class 1. By opening the notebook housing you will gain access to laser devices of up to Laser Class 3b.
- The CD-ROM/CD-RW/DVD/DVD-RW drive contains no user-serviceable parts. Only the manufacturer should perform repairs to the CD-ROM/CD-RW/DVD/DVD-RW drives.

When removing and/or opening laser devices, the following guidelines must be observed:

- DO NOT look into the laser beam, even while wearing optical protection.
- DO NOT allow yourself to be exposed to the laser beam. Avoid exposure of the eyes or skin to direct or stray radiation.

Chapter 5

Appendix

Subject	Page
Standards.....	95
Index.....	98

Standards

Electromagnetic Compatibility

- When connecting additional components, please observe the Guidelines on Electromagnetic Compatibility (EMC). Please note that only shielded cables shorter than 3 meters (9.84 ft) should be used for the LPT, COM, USB, IEEE 1394, audio, video and network interfaces with this notebook.
- Keep the notebook at least one meter (approximately three feet) away from high frequency and magnetic interference sources (e.g., televisions, loudspeaker cabinets, mobile telephones, etc.) in order to avoid malfunctions and/or loss of data.

ISO 13406-2 Class II

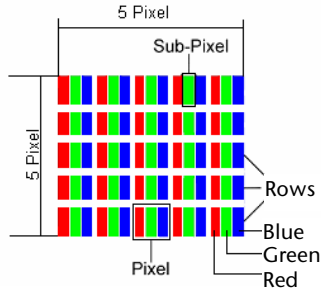
Active matrix LCDs (TFT) with a resolution of **1280 x 800** pixel (**WXGA**), which are in turn composed of three sub-pixels each (red, green, blue), contain about **3.1** million addressable transistors. Because of this very high number of transistors and their extremely complex production process occasionally defective or incorrectly addressed pixels or sub-pixels may occur.

There have been several attempts in the past to define the acceptable number of defective pixels. But this can be difficult and varies widely between different manufacturers.

We, therefore, adhere to the clear and strict requirements of **ISO 13406-2, class II**, for the warranty handling of all TFT display products. These requirements are summarized below.

Within ISO-standard 13406-2 the general requirements regarding pixel defects are defined. Pixel defects are classified into three failure types and four failure classes. Each individual pixel is made up of three sub-pixels in the primary colours (red, green, blue).

Pixel structure



Types of Pixel Failures:

- Type 1:
A constantly lit pixel (a bright, white spot), even though it is **not** addressed. A white pixel is caused when all three sub-pixel are lit.
- Type 2:
A pixel that does not light up (dark, black spot), although it is addressed
- Type 3:
Abnormal or defective red, green or blue sub-pixels.
(E.g. constantly lit with half the brightness, one colour is not shining, blinking or flickering, but not belonging to Type 1 or 2 Pixel Failures)

In addition: A cluster of type 3 (= 2 or more defective sub-pixels in an array of 5 x 5 pixel). A cluster is an array of 5 x 5 pixel (15 x 5 sub-pixel).

ISO 13406-2, Class II

Resolution	Type 1	Type 2	Type 3	Cluster Type 1, Type 2	Cluster Type 3
1024 x 768	2	2	4	0	2
1280 x 854	3	3	6	0	3
1280 x 1024	3	3	7	0	3
1400 x 1050	3	3	8	0	3

Example:

A 17" - SXGA-display consists of 1280 horizontal and 1024 vertical picture dots (pixel), which amounts to a total of 1,31 million pixels. Based on one million pixels this translates into a factor of about 1.31.

Class II type failure consequently allows for three defects each of type 1 and type 2 and 7 defects of type 3 and 3 cluster of type 3.

These cases are normally not covered by warranty.

If the number of failures exceeds the figures of any category mentioned above then this may be covered by the warranty.

FCC Compliance Statement

This equipment has been tested and found to comply with the limits for a Class B digital device, pursuant to Part 15 of FCC Rules. These limits are designed to provide reasonable protection against harmful interference in a residential installation. This equipment generates, uses, and can radiate radio frequency energy and, if not installed and used in accordance with the instructions, may cause harmful interference to radio communications. However, there is no guarantee that interference will not occur in a particular installation. If this equipment does cause harmful interference to radio or television reception, which can be determined by turning the equipment off and on, the user is encouraged to try to correct the interference by one or more of the following measures:

- Reorient or relocate the receiving antenna.
- Increase the separation between the equipment and receiver.
- Connect the equipment into an outlet on a circuit different from that to which the receiver is connected.
- Consult the dealer or an experienced technician for help.

Changes or modifications not expressly approved by the party responsible for compliance could void the user's authority to operate the equipment. Shielded interface cables, if any, must be used in order to comply with the emission limits.

Index

A

All programs	24
Ambient Temperature	5
Audience	ii
Autorun	70

B

Batteries and Proper Treatment	90
Battery operation	
Battery Power	34
Checking the Battery Level	34
Charging	33
Discharging the Battery	33
Removing	32
Battery Power	34
BIOS Setup-Program	73
BIOS Utility	
Running	73
BullGuard Internet Security	74

C

Cabling	8
Care of Displays	88
CD/DVD-Rewriter	50
CD-blanks	50
CD-ROM	47
Charging the Battery	33
Checking the Battery Level	34
Connectors	
External Monitor	39
Modem	54
Power socket	16
Sound card	51
S-Video TV out port	15
TV	41
USB	63
Control panel	25
Copyright®	ii
Correction	83

D

Data and System Security	80
Data Entry	42
Data Security	4
Directories	46
Disc-Drive	47
Discharging the battery	33
Discs	
Loading	47
Removing Blocked Discs	49
Display	36
Opening and Closing the Display	36
Driver Support	87
Drivers	46
DVD-Drive	47

E

Electromagnetic Compatibility	95
EMC	95
Emergency Ejection of a Blocked Disc	49
Express card	
Installing	61
Removing	62
Express Card/54	61
Extended desktop	40
External Monitor	39

F

FAQ	79
Fast Ethernet-Network	57
FCC Compliance Statement	97
Files	
Finding	45
Finding Files	45
Frequently asked questions	79

G	
Getting started	
Inserting the battery	21

H	
Hard Drive	
Partitions	45
Help	67

I	
Icons	25
IEEE 1394 (FireWire)	65
Indicators	
Access	17
Battery.....	18
Capital Lock	18
Num Lock.....	18
Power.....	18
Sleep indicator	17
Wireless LAN.....	17
Introduction.....	3
ISO 13406-2 Class II	95

K	
Kensington-lock	66
Keyboard	42

L	
Laser radiation.....	92
License agreement	23

M	
Main components	27
IEEE 1394	65
Multimedia card reader	60
Main Operation.....	30
Maintenance	88
Care of the TFT Display.....	88
Transporting the Notebook	89
Maintenance Programs	80
Memory cards	
Inserting.....	60
Removing.....	60
Memory Stick.....	60

MMC	60
Modem	54
Modem Port.....	55
Mouse.....	44
Multimedia card reader.....	60
MultiMediaCard.....	60

N	
Network.....	56
Fast Ethernet-Network.....	57
Troubleshooting	59
What is a Network?	56
Wireless LAN	58

O	
On/Off Button.....	29

P	
Partitions.....	45
Password Reset Disk.....	80
Performing the Restore.....	84
Power	
Turning off your computer.....	24
Power Management.....	35
Power supply	7, 29
Battery Operation.....	31
Hibernate Mode	35
Main Operation.....	30
Sleep Mode.....	35
Program bar.....	24
Programs	
Location	46

Q	
Quality.....	ii
Quick launch buttons.....	19

R	
Recover	46
Recycling and Disposal	90
Removing the Battery.....	32
Repairs	92
Restoring	
Limits	84
Running the Bios Setup.....	73

S

Safety and maintenance 1

Safety Instructions 3

 Ambient Temperature 5

 Battery Operation 10

 Cabling 8

 Data Security 4

 Modem 9

 Power supply 7

 Set-Up location 4

 Touch Pad 9

 Upgrades and Repairs 92

Screen Resolution 36

Search 45

Secure Digital (SD) 60

Securing the Notebook

 Startup Password 66

Serial Number i

Service Engineers 92

Set-Up Location 4

Sleep Mode 35

Software 67

 Deinstallation 71

 Installation 70

 Windows Activation 72

Sound card 51

 External audio ports 52

Special keys 20

Standards 95

 Electromagnetic Compatibility ..95

 FCC Compliance Statement 97

Start button 24

Support 87

Suspend to Disk 35

System Recovery

 Correction 83

T

Table of contents vi

Task bar 24

Touch Pad 9, 44

Trademarks ii

Transport 89

Troubleshooting 85

 Errors and Possible Causes 86

Turn off computer 24

U

Universal Serial Bus 63

Upgrades and Repairs 92

Using a safety lock 66

V

Views

 Activity LED optical drive 16

 Audio Out 15

 Card reader 15

 Device indicator 17

 Device indicators 15

 Disc eject button 16

 Emergency ejection 16

 Express Card/54 15

 IEEE 1394 15

 Kensington lock 16

 Keyboard 15

 LAN port 15

 Left side 15

 Line In 15

 Microphone 15

 Modem port 16

 Multifunction touchpad 15

 Optical drive 16

 Power ON/OFF 15

 Power socket 16

 Quick launch buttons 15

 S-Video TV out port 15

 TFT Display 15

 USB-Port 15, 16

W

Windows® Desktop 24

Windows® Update 81

Wireless LAN 58

Working in Comfort 6