

TABLE OF CONTENTS

TABLE OF CONTENTS	1
BEFORE YOU GET STARTED... ..	5
Safety Warnings.....	5
TFT Display Safety.....	6
Important Safety Instructions	6
Data Security	7
Setup Location	7
Temperature	8
Touch Pad	8
Battery operation	8
Power Adapter	9
VIEWS OF THE NOTEBOOK.....	10
Open Notebook	10
Front View.....	11
Left Side.....	11
Right Side.....	12
Device Indicators	13
POWER SUPPLY	14
On/Off button	14
Power Adapter	15
Battery Operation.....	16
Inserting the Battery	16
Removing the battery.....	16
Charging the Battery	16
Battery Power	17
Checking the Battery Level.....	17
Power Management.....	18
Standby Mode	18
Suspend (hibernate) mode.....	18
DISPLAY	19
Opening and Closing the Display	19
Screen Resolution	19
Connecting an External Monitor	19
DATA ENTRY	21
The Keyboard	21
Notebook-specific key combinations	21
Touch pad	21
THE HARD DRIVE	22

TABLE OF CONTENTS

THE OPTICAL DRIVE	23
Handling Discs.....	23
Loading a Disc	23
Removing a Disc	23
Emergency Ejection of a blocked Disc	24
THE SOUND CARD	25
External Audio Ports.....	25
MODEM	26
Modem port	26
THE PC CARD SLOT.....	26
32-bit CardBus Port	27
Use of PC-cards	27
Installing a PC card.....	27
Removing a PC card.....	27
Memory Card Connections	28
Inserting a Memory Card	28
Removing a Memory Card.....	28
Network Connections	28
CONNECTION OPTIONS.....	29
Universal Serial Bus (USB) Port.....	29
LEARNING ABOUT YOUR NOTEBOOK.....	30
Microsoft Windows Help and Support Center.....	30
Microsoft Windows Operating System Manual	30
Microsoft Windows Tour	31
Microsoft Interactive Training	31
Information about Your PC.....	31
Software Help.....	31
External Hardware Help.....	31
System Properties	31
COMPUTER BASICS	33
Turning Off Your Computer.....	34
Restarting (Rebooting)	34
Stand By	34
Can't Turn Off Your Notebook?	35
Looking at the Desktop.....	36
What is a Window?	37
Files and Folders	38
File Names	39
Browsing for Files	40
Searching for Files	40
Using Software Programs	41


Adjusting the Volume	41
Adjusting Your Monitor and Display Settings	42
Changing the Desktop Background	42
Changing the Screen Saver	42
Changing the Text Size for Windows and Buttons	43
Changing the Screen Resolution.....	44
Changing the Color Depth/Quality	44
Hard Disk Drive	45
Checking Hard Drive Space	45
Making Your Own CDs	46
Make a Copy of a Disc Using Nero Express.....	46
Create a Data Disc Using Nero Express	49
Create a Music Disc Using Nero Express	51
INTERNET: WORLD WIDE WEB AND EMAIL	53
Setting Up an Internet Account	53
Setting Up a PeoplePC Dial-up Account	54
Setting Up an Internet Account with a Different ISP	56
Accessing Websites	57
Using Email	58
Microsoft Outlook Express	59
MULTIMEDIA: SOUND, PHOTOS, AND MOVIES	61
Software and Disc Type Recommendations	61
Music	61
Play Music CDs	62
Looking at MUSICMATCH and Windows Media Player.....	63
Create MP3s.....	65
Organize Music.....	66
Photos	68
Moving Images from a Digital Camera to Your Notebook.....	68
Creating Photo Slideshow Discs using PowerProducer.....	69
Movies	72
Playing a DVD Movie	72
Regional Playback Information for DVD	72
CHANGING HARDWARE AND SOFTWARE	74
Adding Software (Programs, Games, etc.)	74
Digital Signatures	74
Removing Software Programs	75
Adding Peripherals (Printers, Scanners, etc.)	76
NETWORKING	77
Wired Networks	77
Setting Up a Wired Network	77
Wireless Networks	78
Setting Up a Wireless Network.....	79
Setting Up a Mixed Wired/Wireless Network.....	79
NOTEBOOK AND DATA CARE	80

Backing Up Data	80
Maintenance Programs	80
Disk Defragmenter.....	80
Disk Cleanup.....	80
Scheduling Tasks.....	80
Password Reset File	81
TROUBLESHOOTING	82
First Steps	82
Troubleshooting Common Problems	83
A CD or DVD Will Not Play.....	83
A CD Recording Failed	83
Hard Disk Drive Problems	84
Hardware Device Problem	84
Keyboard Character Repeats	85
Modem Does Not Dial or Connect.....	85
Modem Volume Is Too Loud/Too Soft	86
<i>Non-System Disk Error</i> Message	87
<i>Not Enough Memory</i> Error Message	87
Printer Does Not Work.....	87
Software Program "Hangs".....	88
Speakers Make No Sound	88
Video Capture Problems	88
Contacting Medion Customer Care	89
SYSTEM RECOVERY	90
Restoring Microsoft Windows XP	90
Restoring the Factory Settings	91
Restoring the Factory Settings: Important Information.....	91
Performing the Restore.....	92
STANDARDS AND LEGAL INFORMATION	94
WARRANTY	97
INDEX	100


BEFORE YOU GET STARTED...

Please read the following section carefully so you know how to keep your data, your Notebook, and yourself free from harm.


Safety Warnings



- **DO NOT allow children to play unattended with electrical equipment.**
- **DO NOT open the case of the Notebook, the battery or the power adaptor.** When the case is open there is a danger of severe electric shock.
- **DO NOT insert objects through the slots and openings of the Notebook.** This may lead to electric shock, short-circuit, or fire that could cause personal harm or damage to your Notebook.



- **DO NOT cover the slots and openings of the Notebook.** These openings are provided for ventilation purposes. Covering these vents may lead to overheating.
- **This Notebook is NOT designed for use within industrial environments.**



- CD-ROM, CD-RW, DVD, DVD-ROM, and DVD-RW drives are **Laser Class 1** devices. These lasers **must** remain in their sealed case. **DO NOT remove the drive covers, as exposure to the lasers may prove harmful.**
- **DO NOT look directly into the laser, even when wearing eye protection.**

For U.S./Canada

Danger: Invisible laser radiation when open. Avoid direct exposure to beam.

Danger: Radiations invisibles du laser en cas d'ouverture. Eviter toute exposition directe au faisceau.


This product is certified by the manufacturer to comply with DHHS rules 21CFR, Chapter 1, Subchapter J, applicable at date of manufacture. Refer to optical drive labels for additional details.

BEFORE YOU GET STARTED...

Please contact Customer Care if the:

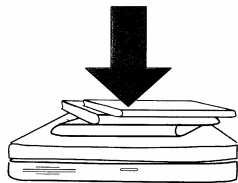
- Power cord or the attached plug is worn or damaged. Have the defective power cord replaced with an original cable. Never try to repair a defective cable.
- Notebook cover is damaged or liquids have penetrated. Do not operate the Notebook until you first check with your dealer. It is possible that the Notebook cannot be operated safely and could cause danger of a potentially fatal electric shock!

TFT Display Safety



- To avoid damage to the TFT Display, **never** open it a **full 180°**. **Do not** forcibly open it.
- In order to avoid damage to the display, **do not** touch it with your fingers or sharp objects.
- **Never** lift the Notebook by the TFT Display; doing so could break the hinges.
- There is a risk of injury if the **TFT display breaks**. Use **protective gloves** to pack up the broken pieces and contact customer service to arrange for proper disposal.

It is important to thoroughly wash your hands after handling a broken TFT display. There is a chance that **chemicals** may have been released.



- **Never** place objects on top of the Notebook that would exert any pressure on the display. There is a danger that even slight pressure may break the TFT display.

Important Safety Instructions

When using any electronic equipment, you should always take basic safety precautions. Following the guidelines below can reduce the risk of fire, electric shock, and personal injury:

- Do not use this product near water (for example, near a bathtub, wash bowl, kitchen sink, laundry tub, wet basement, or swimming pool).

BEFORE YOU GET STARTED...

- Avoid using a telephone or modem (other than a cordless type) during an electrical storm. There may be a remote risk of electric shock from lightning.
- If you find that the power cord or power adapter are worn or damaged, or
- Liquid is spilled on the Notebook and it ceases to function properly, or The Notebook is dropped and ceases to function properly,
 - Shut down your Notebook immediately.
 - Remove the power cord from the socket.
 - Contact Customer Service.
 - Do not restart unless you have contacted Customer Service.

Data Security

Digital pictures of a fantastic holiday, home video of baby's first steps, a term paper on economics, your favorite recipes, financial and tax records... whatever data is important to you, make sure you back it up. We recommend that you make a second copy of all of your data, whether on a CD or DVD, floppy disks, flash cards, an Internet back-up service, or an external hard drive. Medion does not assume liability for data loss or damage to data storage units, and no claims can be accepted for damages resulting from the loss of data or for consequential damages.

Setup Location

- Keep your Notebook and all devices connected to it away from moisture, dust, heat, and direct sunlight. Any of these factors can lead to Notebook malfunction or damage.
- Set up and use the Notebook and all connected devices on a stable, balanced, and vibration-free surface.
- **Do not** leave the base of your Notebook on your lap or any part of your body for a long period of time while the Notebook is turned ON or charging. The Notebook can become very warm while it is turned on or charging and can cause discomfort or injury from heat.

BEFORE YOU GET STARTED...

Temperature

Your Notebook can be used most reliably at an ambient temperature between 41° and 95° F, and at a relative humidity between 30% and 70%. When powered down, the Notebook can be stored at temperatures between -40° and 158° F (without condensation). When powered off, the Notebook can be stored at temperatures between **32°** and **140°**.

Touch Pad

Light pressure with the tip of your finger is all that is required to operate the touch pad. Because the touch pad is electrostatic sensitive, objects cannot be used in place of your fingers. Using a pen or other object can damage the touch pad or cause the Notebook to malfunction.

Battery operation

To extend the life and power of your battery and guarantee secure operation, the instructions below should be followed:



- Never expose the battery to **direct sunlight** or **heat** for long periods.
- **Do not** dispose of the battery by fire as they may explode. Check with local codes for possible special disposal instructions.
- **Do not** open the battery housing; it contains no user-serviceable parts.
- Disregarding these instructions will lead to damage and under some circumstances may even cause the battery to **explode**.

- Keep the battery away from electrically conductive materials, chemical substances and cleaning agents.
- Only use the originally supplied power adapter to charge the battery.
- Fully discharge the battery before recharging it.
- Replace the battery **only** with the same type or an equivalent type recommended by the manufacturer.
- Charge the battery only until the battery charging light goes out. Also, refer to the instructions under "Checking the Battery Level" on page 17 for instructions on checking the battery level.
- Only change the battery when the unit is switched off.
- **Batteries are classified as special waste** and should always be disposed of properly. Contact Customer Service for more details.
- Keep batteries away from children at all times.
- Use only the batteries and power adapter/cord indicated in this manual.

Power Adapter

- Do not open the power adapter housing. When the housing is open there is a **danger** of severe electric shock. It contains no user-serviceable parts.
- The electric outlet must be in the vicinity of the Notebook and within reach of the power adapter cables. **DO NOT** stretch the power cables tightly to reach an electric outlet.
- To disconnect your Notebook from the power source, or set the Notebook to battery operation, remove the power cord from the Notebook's power socket.
- Only use the Notebook with a power adaptor (**FSP065-AAC**) operating at **AC 115V~/60 Hz**. In European countries use the Notebook at **AC 220-240V~/50 Hz**.

For details on power consumption, please refer to the rating plate on the rear of your Notebook. If you are unsure of the type of power supply available at the point of use, ask your local power company.

- Use **only** the supplied power cord and power adapter.
- If using an extension cord, make certain that it meets your local safety requirements. If in doubt, consult an electrician.
- To provide additional protection against electric shock, power surges, lightning strikes, or other electrical damage to your Notebook, we recommend the use of a **surge protector**.

VIEWS OF THE NOTEBOOK

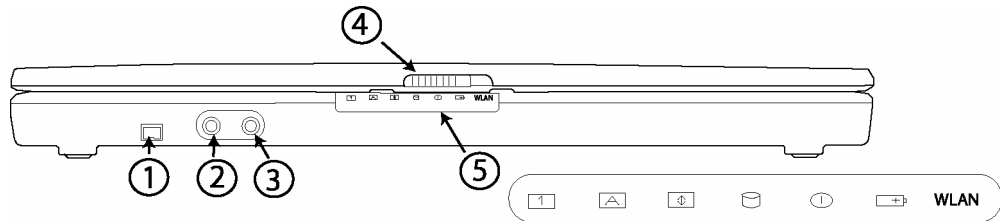
VIEWS OF THE NOTEBOOK

Open Notebook



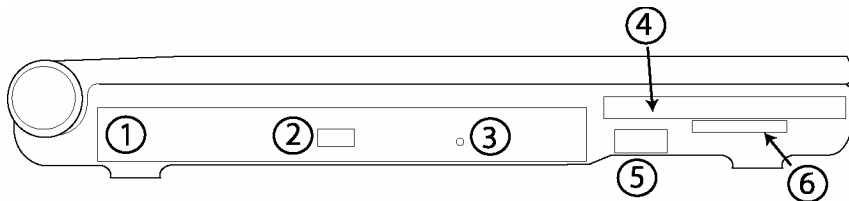
❶	TFT display (⇒ p. 19)
❷	Hotkeys
❸	Power On/Off (⇒ p. 14)
❹	Keyboard (⇒ p. 21)
❺	Touch pad (⇒ p. 21)
❻	Status LED Indicators (⇒ p. 13)

Front View



❶	IEEE 1394 (FireWire®)
❷	Microphone in (⇒ p. 25)
❸	Audio Out/Headphones (⇒ p. 25)
❹	Display catch (⇒ p. 19)
❺	Device LED Indicators (⇒ p. 13)

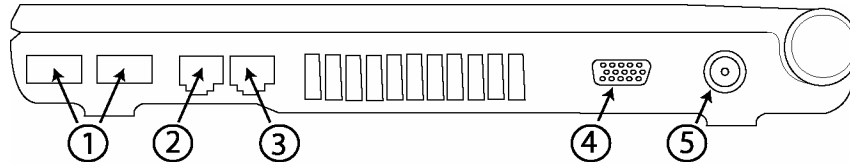
Left Side



❶	Optical drive: DVD/CD-RW Combo drive (⇒ p. 23)
❷	Disc eject button (⇒ p. 23)
❸	Disc emergency eject (⇒ p. 23)
❹	PC card slot PCMCIA (⇒ p. 26)
❺	USB Port (⇒ p. 29)
❻	3 in 1 card reader (⇒ p. 28)

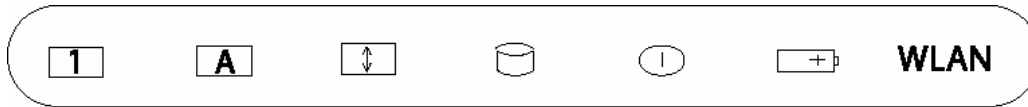
VIEWS OF THE NOTEBOOK

Right Side



- | | |
|----------|----------------------------------|
| 1 | USB Ports (⇒ p. 29) |
| 2 | Modem Port (RJ-11) (⇒ p. 26) |
| 3 | LAN Port (RJ-45) (⇒ p. 28) |
| 4 | External Monitor (VGA) (⇒ p. 19) |
| 5 | Power Socket (⇒ p. 14) |

Device Indicators



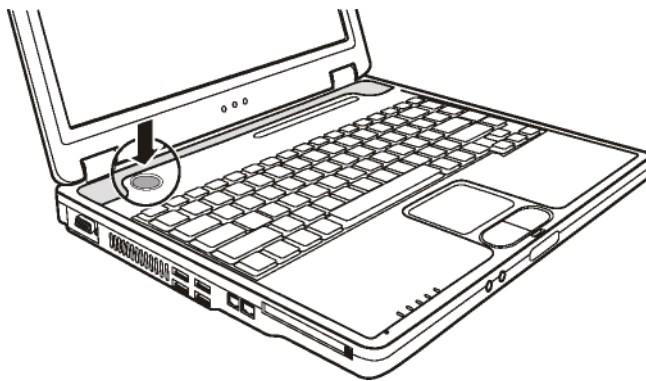
LED's indicate the power and operating system states of the Notebook. The meaning of each LED is:

1	Num Lock This LED lights when NUM-Lock has been activated. It sets the keyboard so that numbers are assigned to certain characters, simplifying number input.
2	Caps Lock This LED lights when CAPS-Lock has been activated. This makes all letters you type be capital letters.
3	Scroll Lock This LED indicates that the Scroll Lock key on the keyboard is activated. The Scroll Lock key has different functions depending on the software you are using.
4	Disk Activity This lights up when your hard drive is reading or writing.
5	Power This LED indicates that your computer is turned on.
6	Battery This lights up when the battery is charging. When the battery is fully powered, this turns off.
7	Wireless Local Area Network When this lights up steadily, WLAN function is enabled.

POWER SUPPLY

On/Off button

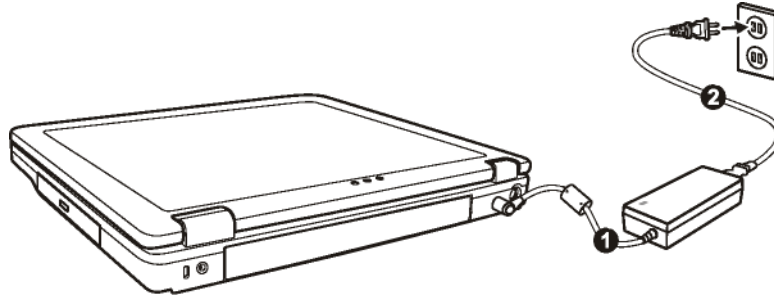
The On/Off button (page 10) is used to power up/down the Notebook. Pressing the button briefly will turn off your computer using the operating system. This is the same as clicking **Start** then **Turn Off Computer**. If the button is held down for longer than 4 seconds, it will force the notebook to power down without going through the operating system shut down process. This may be useful if your computer has crashed or stalled.



WARNING! Do not switch off your Notebook while the **hard disk** or the optical drive is running and the corresponding **media activity LEDs** are lit. Otherwise data may be lost. To protect the hard disk you should always wait for 20 seconds after powering down the Notebook before powering it up again.

Power Adapter

Your Notebook is supplied with a universal AC power adapter, which automatically adjusts to the available power source. The following levels are supported: **AC 100-240V~/ 50-60 Hz**. Please follow the power supply **safety instructions** found on page 9.



The power adapter (1 above) is connected via a power cord (2 above) to an AC outlet. The DC power lead from the power adapter is connected to the rear side of the Notebook (see page 12).

The adapter provides the Notebook with power and also charges the battery. The power supply indicators of the Notebook (see page 10) provide details on the operating state. The battery is also being charged when you are working on your Notebook with the power adapter.

The power adapter is still active when the Notebook is not connected. You should unplug the power adapter from the outlet when it is not connected to the Notebook.



WARNING! Use only the power adapter and power cord supplied with your Notebook.

Battery Operation

In order to extend the life and power of your battery, and to guarantee reliable operation, it is essential that the safety instructions on page 8 are followed.

Inserting the Battery

Slide the battery, contacts first, into the battery compartment.

Removing the battery

Slide the battery locks to remove the battery.



WARNING! Do not remove the battery while the Notebook is running on battery power. You increase the possibility of losing data.

Charging the Battery

The battery is charged via the power adapter. If the power adapter is connected, it charges the battery automatically, whether the Notebook is turned on or not.

It is recommended that from time to time you discharge the battery completely and recharge it afterwards with the Notebook switched off. You can discharge the battery without losing data, if you turn your notebook on without using any application and no power adapter. As soon as the battery is empty your notebook will enter the hibernate mode. We recommend doing this procedure every time you think the battery power is losing efficiency.

Battery Power

A fully charged Li-Ion battery will provide power for hours of operation. However, the battery life will vary according to how the power saving functions are set, the way you work, how much memory your computer has and the display type.

When working in Windows an audible warning alert will sound as soon as the battery level drops below a set minimum value. When this happens, the processing power is reduced in order to save power.



NOTE: Battery warning signals and "Low-Battery" mode will be heard immediately when the power pack is first connected.

Checking the Battery Level

In order to check the current level of the battery, move the cursor over the power symbol in the taskbar.



When in battery mode, a battery symbol is displayed and when the power adapter is in use a power connector is displayed. If the battery is being charged, the power connector has a lightning symbol superimposed over it. Further information on power settings can be obtained by double clicking on the symbol.



NOTE: If you ignore the warning signal when the battery level is low, your Notebook goes into suspend mode. (Depending on the BIOS/OS setting this will be Save-to-Disk or Save-to-RAM).



WARNING! If the battery is empty, your data will not be retained for long in Standby/Save-to-RAM mode.

WARNING! Never remove the battery while the Notebook is switched on or if the Notebook has not yet gone into suspend mode, as this may lead to loss of data.

Power Management

Your Notebook offers automatic and modifiable power saving functions that you can use to maximize battery life and reduce overall operating costs. The power saving modes are known as standby mode and suspend (hibernate) mode.

Standby Mode

When in standby mode, the contents of the RAM of your Notebook are preserved while practically all other components of your Notebook are shut down, reducing your power consumption to a minimum. By pressing any key on the keypad, you can bring your Notebook back to the fully operational state. You will restart at precisely the line in which you were working prior to the interruption. The computer takes less time to go into and come out of standby mode, but uses more power than suspend (hibernate) mode.

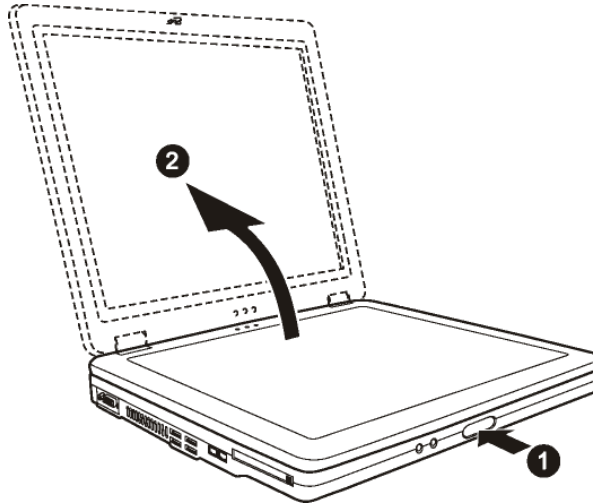
Suspend (hibernate) mode

The hibernate mode is an alternative to a complete shutdown of the Notebook. In this mode all data from RAM (system and graphic data) are copied to the hard disk as a file. As soon as the data has been safely saved, the Notebook powers down. When the Notebook is switched on again, this file is written back to RAM by the BIOS. In a few moments the Notebook is in the exact state as when it was last used. If while working on a document the Notebook is closed (assuming the correct ACPI setting), the Notebook saves the data in RAM for you automatically. You will restart at precisely the line in which you were working prior to the interruption. The computer uses no power while it is in suspend (hibernate) mode, but it takes a little longer for the computer to go into and come out of hibernation compared to standby.

DISPLAY

Opening and Closing the Display

A display catch keeps the display closed when the Notebook is not in use.



To open, use your thumbs to push the bar to the right (❶) then lift (❷) the display with your thumbs and index finger and position it as desired.



WARNING! The display should **not** be opened fully to 180°. Do not try to forcibly open it.

The opening and closing of the display can be assigned various functions via the Power management feature. For example, the Notebook can be programmed to power down when the display is closed.

Screen Resolution

The integral screen has a native resolution of **1280 x 800** pixels. Using a higher resolution can lead to distortion of the display, especially with text. Using a lower resolution may cause the display to use only a portion of the screen area.

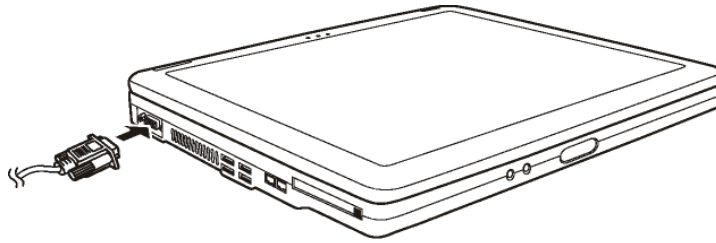
Connecting an External Monitor

The Notebook has a VGA port for connecting an external monitor. To connect and configure an external monitor:

1. Shut down your notebook.
2. Connect the video signal cable of the external monitor to the VGA port of the Notebook (see page 12).

DISPLAY

3. Connect the external monitor to the electrical socket, power it up and start your notebook.




There are two options for setting up an external monitor:

- 1. Clone your Desktop**

This option allows you to display the same picture on both internal and external monitor.

- 2. Extend your Desktop**

This option extends the picture from your internal monitor to your external monitor. Windows can be switched from one monitor to the other.

To configure these output options double click on the following icon in your taskbar: 

DATA ENTRY

The Keyboard

By dual assignment of certain keys you have the same range of functions available to you as with a normal Windows keyboard. Some functions are input using the **Fn** key, which is normal on notebook computers.

Notebook-specific key combinations

Combination	Description
Fn + F2	Toggles the display screen between LCD, external display and simultaneous display.
Fn + F4	Enhances screen brightness.
Fn + F5	Reduces screen brightness.
Fn + F7	Decreases the volume.
Fn + F8	Increases the volume
Fn + F9	Switches the loudspeakers on / off.
Fn + F12	Power saving functions. This key combination is set to power down by default. To adjust this key to your own needs go to display properties in power saving .

Touch pad

The touch pad's primary function is to move the cursor around or select items displayed on the screen with the use of your fingertip instead of a mouse. It is positioned in front of the keyboard (see page 10). The pointer follows the direction which is specified by moving your finger or thumb over the touch pad.

DO NOT use a ball-point pen or other object on the touch pad, as this could damage or cause a malfunction of your touch pad.

Below the touch pad are the left and right mouse buttons which can be used as on a normal mouse. You can also perform a direct click or double click using the touch pad by tapping the surface briefly once or twice.

In the Windows Control Panel you will find a number of useful settings that will make using the touch pad easier. If the Control Panel is in category view,

THE HARD DRIVE

click **Printers and Other Hardware** and then **Mouse**. In classic view, double-click **Mouse**.

THE HARD DRIVE

The hard drive is the main storage medium combining large storage capacity and rapid data access.

The Windows operating system cannot use the full capacity of the hard drive, which means that there will be a difference between the capacity that the BIOS displays and what the operating system displays.

The hard drive contains the operating system of the computer, other application programs and backup files. These programs and files are pre-installed on your Notebook, so you may note that some of the space on your hard drive is already taken.

Whenever the computer is accessing the hard disk, the corresponding LED illuminates (see page 13).



WARNING! Never switch off the computer while the busy indicator is lit since this may result in loss of data.

THE OPTICAL DRIVE

Your Notebook has a CD-RW/DVD-ROM combo drive. This drive can play everything that a DVD-ROM drive can play: DVD movies, music CDs, and data DVDs and CDs. It can also run software programs from CDs and DVDs. In addition, this drive can write data and music CDs and copy CDs. It writes to CD-R or CD-RW.

Handling Discs

To maintain the life of CD and DVD discs, observe these guidelines.

- Avoid radiation by direct sunlight (UVA/UVB).
- Avoid scratches and damage to the disc surface.
- Avoid extreme temperatures.
- Do not attach labels or paper to DVD discs.
- Do not use record-cleaning or anti-static agents to clean your discs.

We also recommend that you avoid specially shaped discs such as hearts or polygons, or discs that are not standard size. Do not use warped or cracked discs as they may cause damage to your drive.

Loading a Disc

⇒ **Attention:** Do not use scratched or dirty disks, discs with pieces broken off or disks of poor quality. Because of the high speeds in the drive the disks might break and damage your data as well as your drive. Examine the disks before you enter them. If damage or dirt is visible, you should not use them. Damage caused by faulty media is excluded from warranty and their repair must be charged.

1. Press the eject button on the front of the drive to open the tray.
2. Place the disc on the tray so that it lays flat with the label facing upward.
3. Gently push the tray in to close it.

Removing a Disc

Press the eject button on the front of the drive to eject the disc.



WARNING! While the Notebook is accessing the CD-ROM drive the media activity indicator is lit. Do not try to remove the CD from the drive while this LED is lit.

THE OPTICAL DRIVE

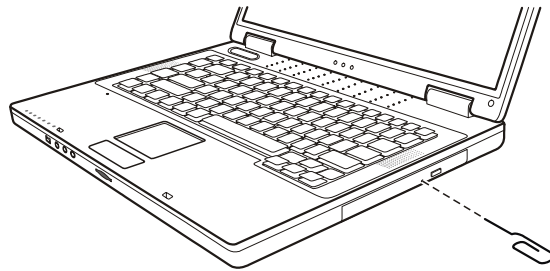
Emergency Ejection of a blocked Disc

If the tray fails to open automatically, then the tray can be opened manually provided there is an opening for emergency ejection. (⇒ p. 11).

Restart your notebook and if the tray is still locked proceed as follows:

Shut down Windows and switch off your notebook.

Insert a long thin object (like a straightened paper clip) into the emergency ejection opening until you feel resistance.



Press lightly and the tray will open.

Remove the disc and restart the notebook.

THE SOUND CARD

Your Notebook has an integrated stereo sound card (on-board) with 16-bit and 3D spatial sound effects. The sound card is compatible with the industry standard **Sound Blaster** and **Microsoft Sound System Version 2.0**. This guarantees optimal support for all popular programs and games.

If you wish to alter the base volume, click on the loudspeaker symbol in the task bar. A double click opens the sound mixer.

You can use the key combinations (⇒ page 21) to control the volume.

You can use **Fn+F8** to increase the volume and **Fn+ F7** to decrease it.

External Audio Ports

<p>Microphone in (⇒ page 11)</p>	<p>For recording via an external microphone.</p>
<p>Audio out (⇒ page 11)</p>	<p>For sound reproduction via external stereo equipment such as loudspeakers (active) or headphones.</p> <p>The notebook automatically recognizes if an analog (3.5mm stereo plug) or a digital (optical) link has been created. The internal loudspeakers are switched off when this port is used.</p>

Your Notebook has a loudspeaker, so you can play sounds without additional equipment. The connection of a Hi-Fi system increases the sound quality significantly.

MODEM

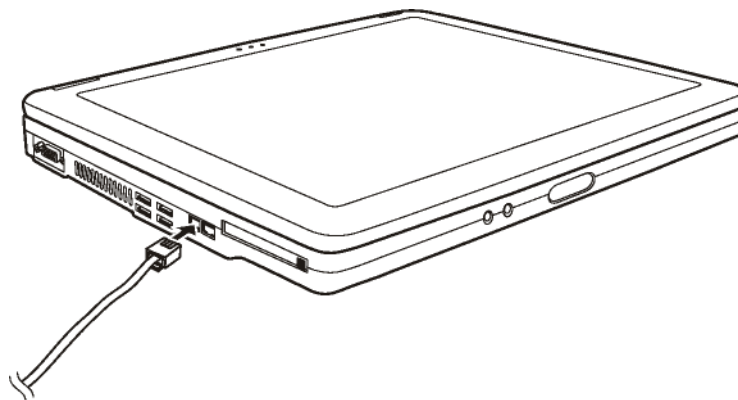
MODEM

The modem is fitted with an RJ-11 interface, into which a standard telephone lead can be plugged.



WARNING! Use only with an analog telephone line. The modem cannot withstand the voltage levels of digital telephone systems such as PBX or lines such as ISDN or Broadband services.

Modem port



Insert one end of the RJ11-connection (telephone plug connector) into the modem/network interface and the other into an analog telephone socket that is easily accessible.



NOTE: Do not place the Notebook in Suspend (or Sleep) mode if you are connected to your Internet provider, since this will cause the modem connection to be lost.

THE PC CARD SLOT

The PC card slot on the left side (see page 11) of the Notebook can be used to operate credit card-sized PC cards. Most PC cards are communications or interface devices such as ISDN-, Faxmodem-, Network- or SCSI-adapters.

Some PC cards contain memory chips or hard disks for data storage. If you use such cards with your Notebook, the system assigns the card a drive name, so that you may access the resources. The PC card drive in your Notebook supports PCMCIA 2.1 - (Type II), and CardBus (Type I) cards. Cards of Type I are 3.3 mm, and Type II 5 mm thick.

32-bit CardBus Port

CardBus cards have a 32-bit architecture with which high data transfer speeds of up to 132 MB can be achieved, similar to PCI. In this way your Notebook can also support data intensive devices such as 100Mbps Fast Ethernet, Fast SCSI peripherals and video conferencing devices.

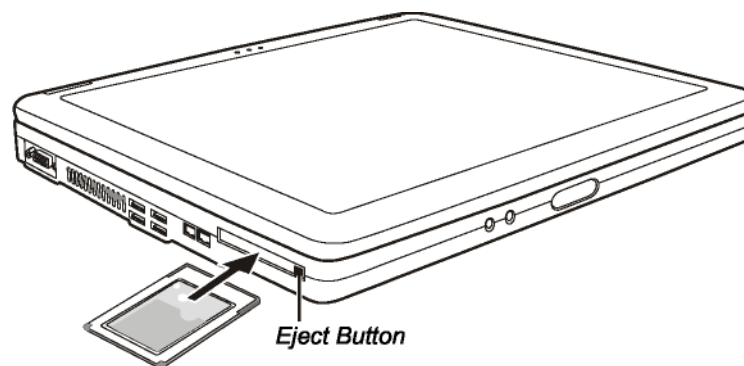
The CardBus port is backward compatible with 16-bit PC cards with a 5V power supply, though the CardBus only requires a power-saving 3.3V.

Use of PC-cards

In order to run a PC card, special software is needed (drivers, etc.). The card manufacturer usually supplies this software. Support for the card port is a component of Windows® and at present represents the optimum in operational smoothness. You should consider this point when choosing between alternative operating systems.

Installing a PC card

Follow the PC card installation instructions that are given for use under Windows® and have the necessary driver software ready. Once you have started Windows®, insert the card carefully into the slot provided.



When the card is fully inserted two audible signals will be heard, provided it has been correctly recognized and successfully configured.

If only one signal is heard, this signifies a problem with the card recognition. In this case, follow the instructions that accompany your new PC card.

Removing a PC card

To remove your PC card, press the eject button next to the slot.

THE PC CARD SLOT

Memory Card Connections

Memory cards are media that are being used for a variety of purposes, especially in digital photography. They are increasingly replacing the floppy disk. The form and capacity of a memory card can vary according to the manufacturer.

Your notebook supports the following formats:

- MMC (MultiMediaCard)
- SD (Secure Digital)
- Memory Stick/Memory Stick Pro

When inserting memory cards, ensure that the contacts are facing the right way. See table below. Incorrect insertion of a card can cause damage to the card reader and/or the card.

Inserting a Memory Card

Insert the card with the contacts pointing down. Push the memory card into the slot until it clicks into place.

Removing a Memory Card

Press the card further into the slot. Then pull out and remove the card.

Network Connections

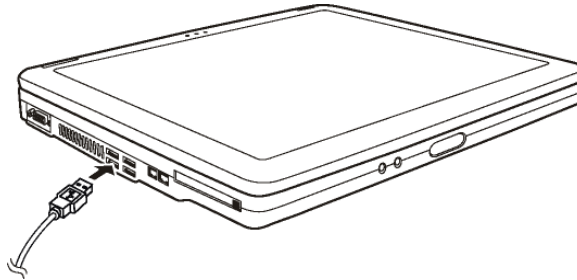
Connect a network cable, with RJ-45 connectors on each end, to the network port on your computer. Attach the other end to a hub, switch or router. Your computer has a 10/100 ethernet card, meaning it can connect at either 10Base-T or 100Base-T speeds.

The cable used to connect your computer to a host (generally a hub) is called straight-through Twisted Pair Ethernet (TPE). The end connectors are called RJ-45 connectors. These connectors are not compatible with RJ-11 phone line connectors. If you are connecting two computers together directly (without a hub or router), you will need crossover twisted-pair wire.

CONNECTION OPTIONS

The Notebook has a number of input and output interfaces for connection of peripheral devices such as a printer, scanner, keyboard, and so on. This section presents the individual ports. For further information, refer to pages 11 and 12, where the positions of the respective ports are described.

Universal Serial Bus (USB) Port



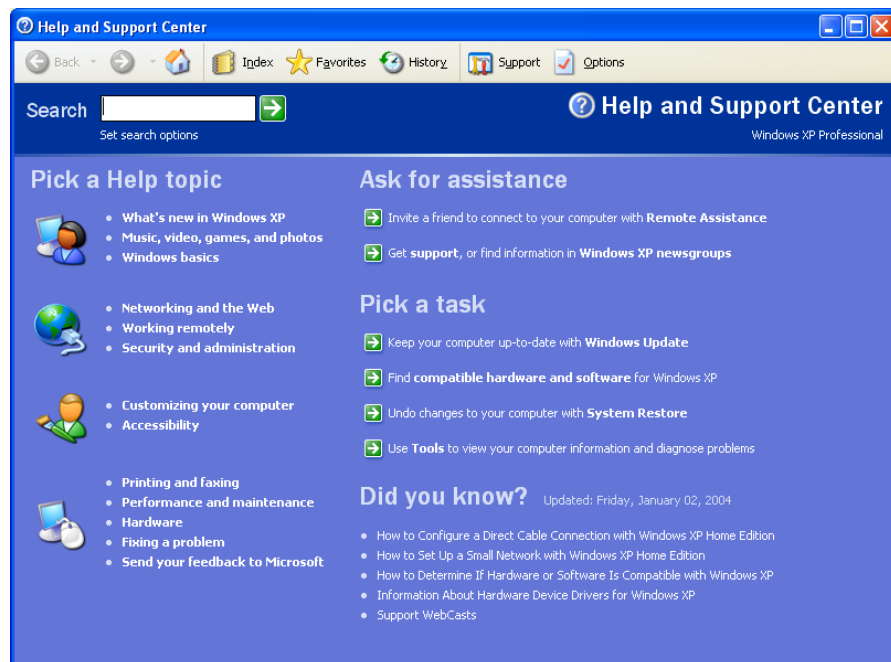
3 USB ports are located on your Notebook. You can use any USB device with any USB port. Some USB devices require that you reinstall software drivers when you connect the device to a different USB port than the one originally used. This can be avoided by always using the device with the same USB port. Devices connected directly to the USB bus should not draw more than 500 mA. Should the devices need more power than this, it will be necessary to provide a powered hub.

LEARNING ABOUT YOUR NOTEBOOK

There are many different resources in addition to this manual to help you use your Medion Notebook.

Microsoft Windows Help and Support Center

This invaluable resource has answers to most questions about your Notebook. It can be found by selecting **Start**, then **Help and Support**.



* Your Help and Support Center screen may not appear exactly as the one shown.

The Help and Support Center gives you many options for finding information. You can use the *Search* box at the top of the screen to look up information about a specific issue. You can also browse different topics on the left-hand side of the screen. The right-hand side of the screen shows common tasks that you may want to perform on your system.

Microsoft Windows Operating System Manual

A printed manual from Microsoft can be found in your accessory kit. It provides general information about your operating system—the master software that controls how your computer works.

Microsoft Windows Tour

This is an interactive tour that comes with your computer. Select ***Start***, then ***All Programs***, then ***Accessories*** to access the tour.

Microsoft Interactive Training

Training is the most powerful way to acquire skills that help you perform a specific task efficiently. Select ***Start***, then ***All Programs***, then ***Accessories*** to access Microsoft Interactive Training.

Information about Your PC

Clicking on ***Start***, then ***Information about your PC*** will bring up more information about your PC, as well as useful links to software tools and other resources. You may also find last-minute information about your Notebook that is not included in this manual.

Software Help

Many software programs include extensive help features within the program itself. Look for a menu option at the top of the screen that says *Help*, or icons that display a question mark. In many programs, pressing the *F1* key on your keyboard will bring up a *Help* menu.

Software companies often have extensive websites with additional information about their products, and sometimes even templates or other useful tools. Sometimes, there will be a link to a website under the *Help* menu. Other times, you may need to perform an Internet search to find the correct website (see the section *Internet: Worldwide Web and Email* in this manual).

External Hardware Help

The best source for information about external hardware (for example, a printer, scanner, or digital camera) is the manufacturer of the equipment. If the answer you need isn't available in the manual and/or CDs that came with your external hardware, or if you have misplaced these materials, the manufacturer's website is usually quite helpful. Such websites often provide documents and files that you can download, as well as answers to common questions.

System Properties

System Properties can also help you identify characteristics of your Notebook.

LEARNING ABOUT YOUR NOTEBOOK

- ❶ To access System Properties, right-click (press the right mouse button) on **My Computer**.
- ❷ A menu will appear. Left-click (press the left mouse button) on **Properties** at the bottom of the menu.
- ❸ A dialog box will open that shows your processor type and speed, as well as the amount of RAM on your system. On some systems without a separate graphics card, the amount of RAM that you see here is the total amount of RAM minus the amount shared for video (typically 16 MB or 32 MB). See your Specifications Sheet for more information.

Some of the tabs in System Properties can provide even more in-depth information about your Notebook and its components. You can also change some of the operating system settings in this window.

- The **Hardware** tab provides access to the *Device Manager*, a tool for checking the hardware installed on your system.
- The **Automatic Updates** tab can be used to set up your system to automatically download important security and performance updates from Microsoft.
- The **System Restore** tab lets you adjust the amount of disk space that can be used by the *System Restore* feature included as part of your operating system.

COMPUTER BASICS

The information in this section is designed to help you use the basic features of your Notebook. More information about using the Internet and special multimedia features of your Medion Notebook can be found in later sections.

The first time you start your Notebook, you will be asked a series of questions that will help make sure that your Notebook is set up properly. Please pay careful attention to these instructions and choose the answers that are best for you.

During this setup process, you will be asked for information about your Internet account. If you don't yet have an Internet account, simply skip these screens. If you do have an Internet account, you can either contact your ISP (Internet Service Provider) immediately to fill in the requested information—or you can skip these screens and contact your ISP later for assistance in setting up your account on your new Notebook.

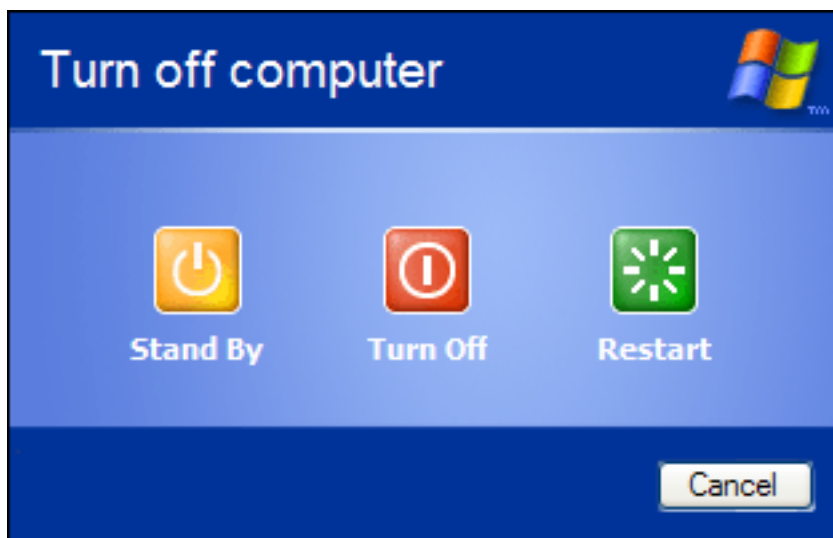
Turning Off Your Computer

- ① To turn off your computer, click the **Start** button, then click either **Turn Off Computer** or **Shut Down** (this will depend on the operating system that is installed on your Notebook).
- ② A dialog box will appear. Select **Turn Off** or **Shut Down**. Then click **OK** to turn off your Notebook.

Restarting (Rebooting)

Sometimes, you may want to restart (reboot) your computer.

To restart your computer, follow the instructions for turning off your Notebook, but select **Restart** in the final dialog box.



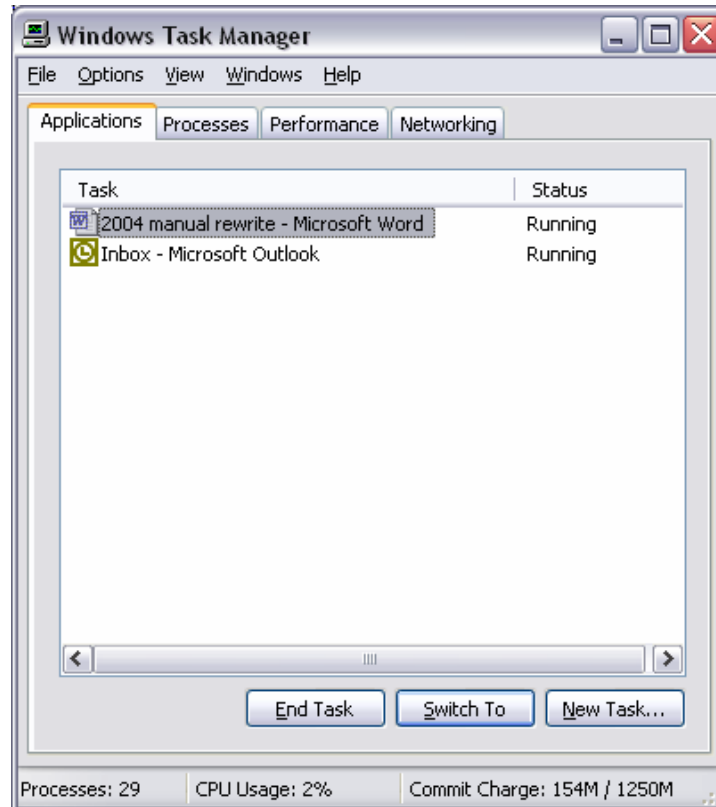
Stand By

Stand By puts your computer in a special mode that saves power without shutting down completely. Your work and all open programs are saved to your Notebook's RAM while in standby mode. This helps you get back to work (or play) more quickly when you return to your Notebook. However, if the Notebook loses power completely (due to a power outage, for example), any unsaved work will be lost. To bring your Notebook out of standby mode, simply press any key on your keyboard, or press and release the main power button on the front of your Notebook.

Can't Turn Off Your Notebook?

Sometimes, if your computer is "hung" or "frozen," it might not be possible to use the *Turn Off* or *Shut Down* command to turn it off. In these instances, try the following procedure.

- 1 First, press **CTRL + SHIFT + ESC** simultaneously (this is easiest to do if you press and hold CTRL, then press and hold SHIFT, then press ESC). This will open the *Task Manager*.



- 2 Once you are in the *Task Manager*, look in the Status column for programs that are "Not Responding." Select these programs with your mouse, then click **End Task**. Then close the *Task Manager* and see if your computer can be properly turned off.
- 3 If this does not solve the problem, you can press and hold the main power button on the front of your Notebook for five seconds. This will force your Notebook to turn off. **However, this should be done only as a last resort because it can damage your Notebook!**
- 4 Wait 30 seconds for the hard drive to stop spinning before turning the power back on.

Looking at the Desktop

Your Microsoft Windows operating system desktop is similar to your physical desktop. It's your main workspace, where you keep your open files and folders and store your commonly used tools. Your desktop might not look exactly like the one shown here.

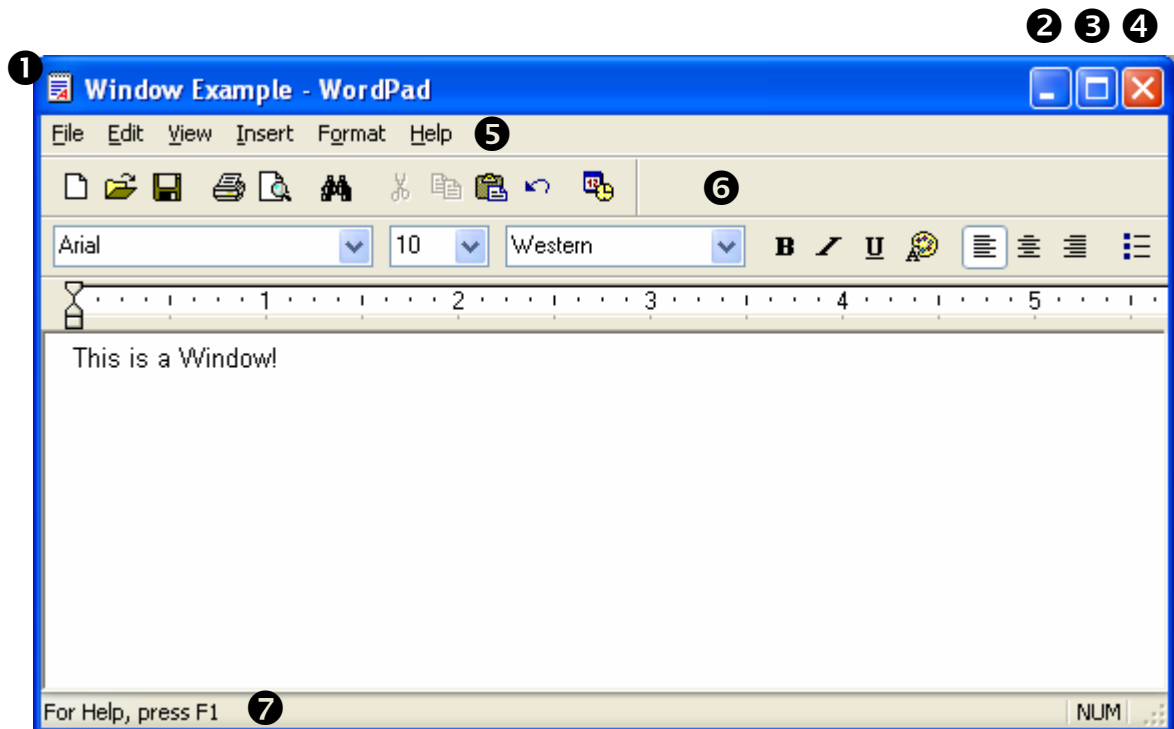


- 1 Start:** Clicking on the **start** button brings up the *Start menu*. This menu can take you to your programs and documents, and it is also an easy place to access common tools such as *Help and Support* and the *Control Panel*.
- 2 All Programs:** Your most recently used programs will automatically appear on the left side of the *Start menu*. If you don't see the program that you want to use, click **All Programs** to bring up a more comprehensive list.
- 3 Control Panel:** The *Control Panel* is where you will find options for configuring different parts of your Notebook.

- ④ **Current User:** This shows the name and icon for the user who is currently logged in to the Notebook. Different users may have different settings for personalization and privacy.
- ⑤ **Shortcuts:** Double-clicking an icon on the desktop opens the associated file, folder, or program.
- ⑥ **Task Bar:** The task bar shows the status of your computer, as well as any open programs.
- ⑦ **Recycle Bin:** The *Recycle Bin* is a holding tank for items that you want to delete. To send an item to the Recycle Bin, either select the item and press **Delete** on the keyboard, or just drag the item onto the Recycle Bin.

What is a Window?

When you open a program or file, it will usually be displayed in a *window*. This is the frame that surrounds your current work. A typical window is shown below. Windows for different programs will have different appearances and tools, but these basic elements are shown in most windows.



COMPUTER BASICS

- ❶ The name of your program or file will be shown at the top in the *title bar*. You can click and drag the title bar to move the window.
- ❷ This button will *minimize* the active window. A minimized window is still open, but it is shown only as a tab on the task bar. This lets you see other windows or the desktop behind the active window. To return the window to full size, just click on its tab on the task bar.
- ❸ This button will *maximize* the active window. This will expand the window to take up as much space as possible, which will let you see more of your document or picture on the screen.
- ❹ This button will close the current window. Make sure you save first!
- ❺ The *main menu* is where you will find the tools available in a particular program. Clicking on one of these items will open a *drop down* menu where you can select specific tasks to perform.
- ❻ Most programs show commonly used tools on *button menus*. Hold the pointer over a button—without clicking!—to bring up a short description of the button's function.
- ❼ The *status bar* shows details about your current program. If you are working on a document with many pages, you can probably see which page number is currently shown on your screen in the status bar.

Files and Folders

Documents, pictures, music, and other items are saved as *files* on your Notebook.

Folders hold groups of files (or other folders), just like a physical filing system. You can create and name folders to make it easier to find a specific file. For example, if you have several different files that you use to organize the Little Feet soccer team (a calendar, a roster, an equipment list, etc.), you can create a folder called *Little Feet*, where you can store all of the related files.

My Documents is a special folder that is easy to access from the desktop or the *Start menu*. In order to find your files quickly and easily, we recommend that you store them in the My Documents folder.

Files and folders can be saved on *drives*. To see the drives on your Notebook, double-click on the **My Computer** icon on your desktop. Each drive has a specific letter, such as (C:) or (A:).

Drives are organized by *Hard Disk Drives*, *Devices with Removable Storage*, and *Network Drives*.

Hard Disk Drives are your Notebook's main storage. The *My Documents* folder is saved on your main hard disk drive, usually labeled (C:).

Devices with Removable Storage can include floppy disk drives, CD drives, and DVD drives, as well as card reader drives, pen drives, or even a digital camera that is connected to your Notebook!

Network Drives are hard drives on other computers that you can access through a network, when applicable.

File Names

Each file has its own *file name*, such as "Tanya_walking.jpg" or "My_favorite_song.mp3". The last three characters of the file name, the ones after the period, are the *file extension*. These tell your Notebook what type of file it is, and what program to use to open the file. For example, the extension *.mp3* tells your Notebook that *My_favorite_song* is a music file, and that it should be opened with a program that plays music.

You can change the program that is used to open files labeled with a particular extension. For example, you can set all *.mp3* files to be opened with MUSICMATCH instead of Windows Media® Player, or vice versa.

- ❶ Click on **Start**, then **Control Panel**.
- ❷ Switch to *Classic View* if you are not already in it.
- ❸ Double-click **Folder Options**.
- ❹ Click on the **File Types** tab.
- ❺ Scroll down to the file type you want to change and left-click on it to select it.
- ❻ Click **Change** and select a program from the list that appears. We recommend that you choose only programs from the *Recommended Programs* list.
- ❼ Click **OK**, then **Close**.

If the *Change* button is dim and clicking on it doesn't do anything, then you can not change the program associated with that file type.

If you change your mind later, you can return to the *File Types* tab, select the file type, and click **Restore** to have the file type opened by the default program.

COMPUTER BASICS

Folders also have their own names, but they do not have extensions. Opening a folder will show you the files inside, but it will not open any programs or documents.

Browsing for Files

Browsing is an effective way to find a specific file if you already have a pretty good idea of which folder contains it. There are several ways to start browsing for a file.

To go straight to your *My Documents* folder, either double-click the **My Documents** icon on your desktop, or click **Start**, then **My Documents**.

To look for files in other folders, you can:

- Double-click the **My Computer** icon on your desktop, or
- click **Start**, then **My Computer**, or
- press **⊞ + E** on the keyboard to open *Windows Explorer*.

Any of these methods will give you access to the files on your hard drive, as well as files on connected devices—such as a Compact Flash card from your digital camera that is in the card reader, a DVD in one of your optical drives, or an MP3 player that is connected to one of your USB ports.

When browsing a folder that contains many files, select **View** on the top menu bar, then **Details**. This will display several columns with additional information about each file, such as the size of the file, the type of file, and the date it was last modified. Click on the column header to sort the files by that attribute. For example, to sort files by size, click **size**.

Searching for Files

If you aren't sure where to start looking for a file, it is sometimes faster and easier to use the search tool to locate it. You can open the *search* window by clicking **Start** then **Search**. Or, you can simultaneously press the **⊞** key and the **F** key on the keyboard.

Instructions on the left side of the screen will walk you through the search process.

Using Software Programs


Software programs are also called simply *programs*, or *applications*. Programs are the tools that you use to tell your computer what to do. For example, *word processing* programs are used to create text documents like this manual. *Microsoft Word* is an example of a well-known word processing program.

We have taken care to select software that will help you explore the Internet, enjoy your photos or videos with family and friends, listen to music and watch movies. We test our products with applications to ensure that you will have a great user experience. Not all of these programs appear on your Notebook desktop. We feel that this is your personal space and you should choose what appears here. You can access the programs installed on your Notebook through the *Start* menu. Click **Start**, then **All Programs** to see a list of the programs on your Notebook, as well as special offers from some of your favorite companies.

Please note that the software programs included with your Notebook have all been pre-installed. You do not need to use the discs that came with your Notebook to install programs. These are for back-up purposes only.

Adjusting the Volume

There are several ways to adjust the volume on your computer.

- You can use **Fn+F8** to increase the volume and **Fn+ F7** to decrease it.
- You can adjust the system volume by double-clicking this icon  in the bottom-right corner of your screen. This will open the *Volume Control* window. You can also access the Volume Control window by clicking **Start**, then selecting **Accessories**, then **Entertainment**, then **Volume Control**. The options shown in this window will vary depending on your particular system. This window will allow you to change the volume and balance for your entire system or for individual devices.
- Finally, the software program that you are using may have a built-in volume control. For example, both MUSICMATCH and Windows Media Player have volume sliders that control the volume of the music that they are playing without affecting the volume of system alerts.

Adjusting Your Monitor and Display Settings

There are many settings that you can adjust to control the way that your Notebook displays text and images on your screen. To access these settings:

- ➊ Select **Start**, then **Control Panel**. If you are in Category View, click **Appearance and Themes**.
- ➋ Click/double-click **Display**. This opens the *Display Properties* window.

You can also access the *Display Properties* window by right-clicking anywhere on the desktop and then selecting **Properties**.

Changing the Desktop Background

- ➊ In the *Display Properties* window, click the **Desktop** tab.
- ➋ Select one of the images in the *Background* list, or click **Browse** to use a personalized photo or image that you have saved on your hard drive. Locate the image you would like to use, and click **Open**.
- ➌ Your new background image is shown on the sample display. The **Position** drop down menu lets you change how the image is displayed.
- ➍ Click **Apply** to show your new background image on your desktop. If you are satisfied with this image, click **OK**.

Changing the Screen Saver

Using a screen saver can help extend the life of your monitor and prevent *burn in*, which happens when images that are displayed for an extended period of time create flaws in the monitor.

- ➊ In the *Display Properties* window, click the **Screen Saver** tab.
- ➋ Choose a screen saver from the drop down menu. The screen saver is displayed with its current settings on the sample display.
- ➌ Click **Settings** to customize your screen saver. This will open a dialog box with options that depend on the screen saver that you have chosen. When you have finished changing the settings, click **OK** to close the dialog box.

- ④ Click **Preview** to see what your screen saver will look like on a full screen. Move the mouse or press any keyboard key to end the preview.
- ⑤ Enter the number of minutes that you would like your Notebook to wait before it displays the screen saver. If you enter 5 minutes, the Notebook will display the screen saver after the Notebook keyboard and mouse have been inactive for 5 minutes.
- ⑥ Select **On resume, password protect** to have your Notebook require your Windows password to access the computer once the screen saver has started. This can prevent others from using your computer if you have left it on while out of the room.
- ⑦ Click **OK** to accept your changes and close the *Display Properties* window.

Changing the Text Size for Windows and Buttons

- ① The size of the text on your windows can be changed to be easier to read. For example, if your Notebook is set to display at a very high *resolution* (see below), the words on your desktop and menus may be too small to read. In this case, you would want to use a larger *font*. In the *Display Properties* window, select the **Appearance** tab.
- ② Choose a *Font size* and click **Apply**. It may take a few moments for your Notebook to apply the change.
- ③ Click **OK** to accept your changes and close the *Display Properties* window.

This will not affect the size of the font in your software programs, such as text in Microsoft Word. However, many programs include a *zoom* feature that will allow you to increase or decrease the size of text and objects on the screen.

Changing the Screen Resolution

The resolution of your screen is the amount of detail it shows. High resolutions include more information, which makes individual elements appear smaller. A low resolution shows less information, but individual elements appear larger.

- ① In the *Display Properties* window, select the **Settings** tab.
- ② Drag the **Screen resolution** slider to the resolution you want to use.
- ③ Click **Apply**. If you receive an error message, or if your screen goes completely blank, **don't panic!** Just wait a few moments and your PC will return to the previous settings.
- ④ Your new resolution will be shown on screen. Click **Yes** on the dialog box that appears to accept the new resolution, or click **No** to return to the *Display Properties* window.

Changing the Color Depth/Quality

Color depth, or color quality, is the number of colors that your display can show. Some programs, such as demanding games, may require that you reduce the color depth for the game to run smoothly.

For most tasks, you will not need to change the color depth. This has been set at the factory for optimal results.

- ① In the *Display Properties* window, select the **Settings** tab.
- ② Use the drop down menu under **Color quality** to choose the color depth.
- ③ Click **Apply**. If you receive an error message, or if your screen goes completely blank, **don't panic!** Just wait a few moments and your Notebook will return to the previous settings.
- ④ Your new color settings will be shown on screen. Click **Yes** on the dialog box that appears to accept the new resolution, or click **No** to return to the *Display Properties* window.

Hard Disk Drive

Your hard disk drive, or hard drive, is the main storage for your Notebook. This is where your files and programs are saved.

Although most Medion Notebooks ship with only one physical hard disk drive, you may see two or more drives in this section. This is because the hard disk drive has been *partitioned* to act as multiple drives. Partitioning the drive allows us to store important files for restoring your Notebook to the factory condition in case something goes wrong. Usually, the (C:) drive is where you will store your personal files, and the much smaller (D:) drive holds recovery information. **It is very important not to alter or delete the existing files on the (D:) drive, or change the size of the (D:) partition.**

Checking Hard Drive Space

From time to time, you may want to see how much space is available on your hard drive.

- ❶ Double-click ***My Computer***.
- ❷ Right-click on the drive that you want to check.
- ❸ On the pop-up menu, select ***Properties***.

Making Your Own CDs

You need permission from the copyright owner to record copyrighted material onto a CD. Otherwise, you may be violating copyright law and be subject to payment of damages and/or other remedies. If you are uncertain about your rights, contact your legal advisor.

Some CDs have copy protection software that will not allow them to be copied.

There are several types of discs that you can create with your Medion notebook.

- A *data* disc is for files and folders that can be read on a notebook. For example, you might use a data disc to archive documents and spreadsheets.
- A *music* disc is one that can be played on conventional CD players, such as the one in your home or car. These will work only if your CD player supports the type of CD (for example, a CD-R).

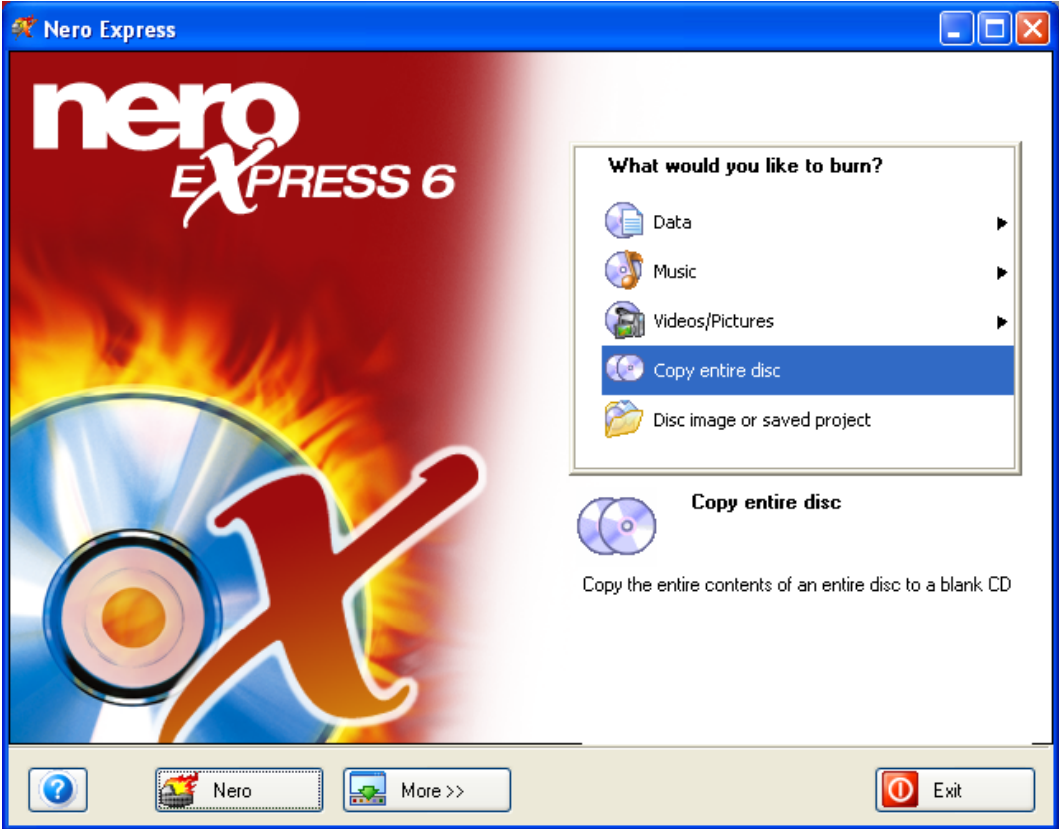
Nero Express software has been included with your notebook to make creating your own music, video, and data discs a snap. To open Nero Express, select **Start**, then **Nero Burning ROM**, then **Nero Express**.

Make a Copy of a Disc Using Nero Express

Follow these instructions to copy an entire disc, whether it's a music CD or data CD.

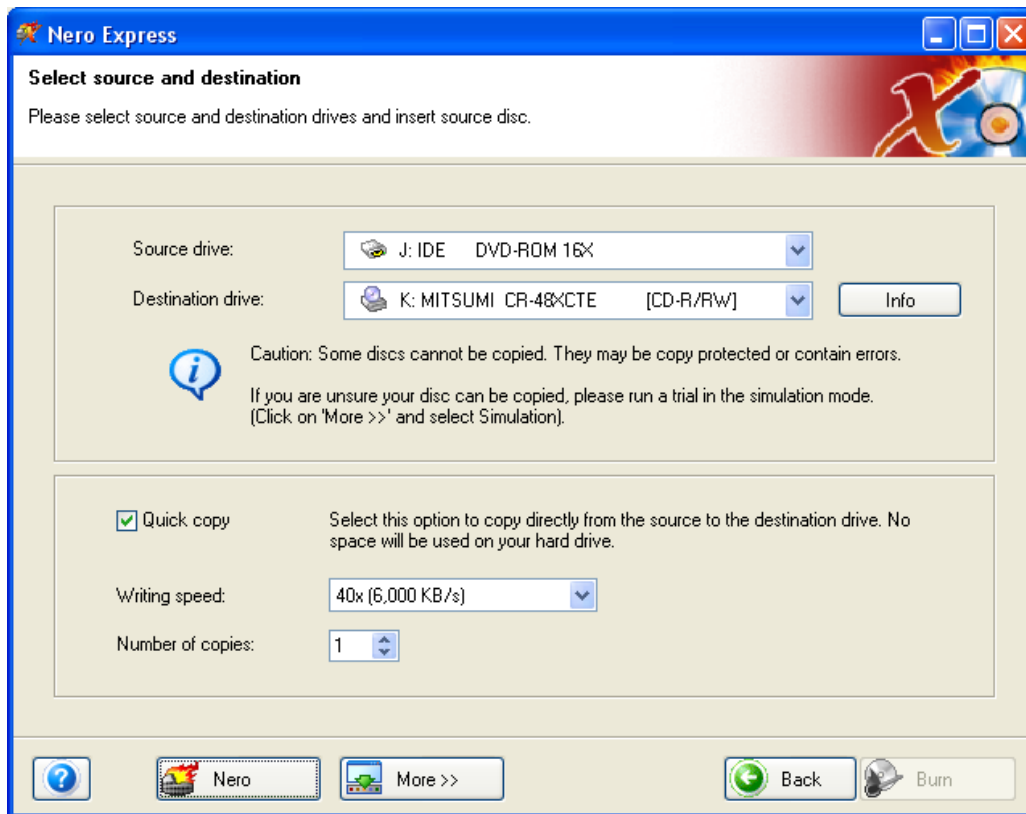
- ➊ If you have multiple disc drives, insert a blank, recordable disc in your recordable drive (CD-RW/DVD). Insert your original disc, the one that you want to copy, in your second drive.
** *or* **
If you have only one disc drive, insert the original disc in the drive.
- ➋ Clear any messages that appear by selecting **Cancel**. If your original disc starts playing automatically, stop play and close any opened programs.
- ➌ Open Nero Express.

4 Select **Copy entire disc**.



COMPUTER BASICS

- 5 The *Select source and destination* window opens. Use the **Source drive** drop down menu to select the drive that holds the original disc.

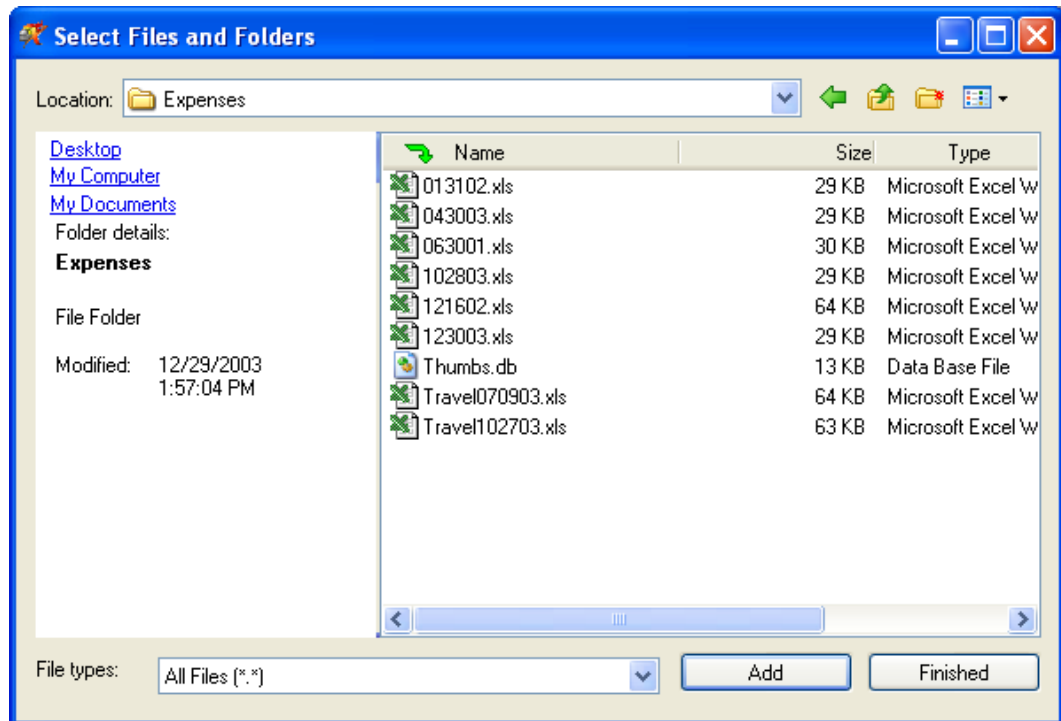


Use the **Destination drive** drop down menu to select the drive that holds your blank disc. If you have only one optical drive, the destination drive will be the same as your source drive.

- 6 Click **Burn**. (If the Burn option is grayed-out, check that there is a blank recordable disc in the burning drive.)
- 7 If you are copying a music CD, the *Nero's Title and CD Database* window may open. If it displays the correct information for your disc, you can click **Selected disc** to save the song and album information on your new CD. Otherwise, click **Cancel** to continue burning.
- 8 The *Burning Process* screen opens. If you are using a single drive, replace the original disc with a blank, recordable disc when prompted.
- 9 A dialog box will appear when your burn is complete. Click **OK** to clear this box, then click **Next**. Your discs will automatically be ejected, and you will return to the opening screen on Nero Express.

Create a Data Disc Using Nero Express

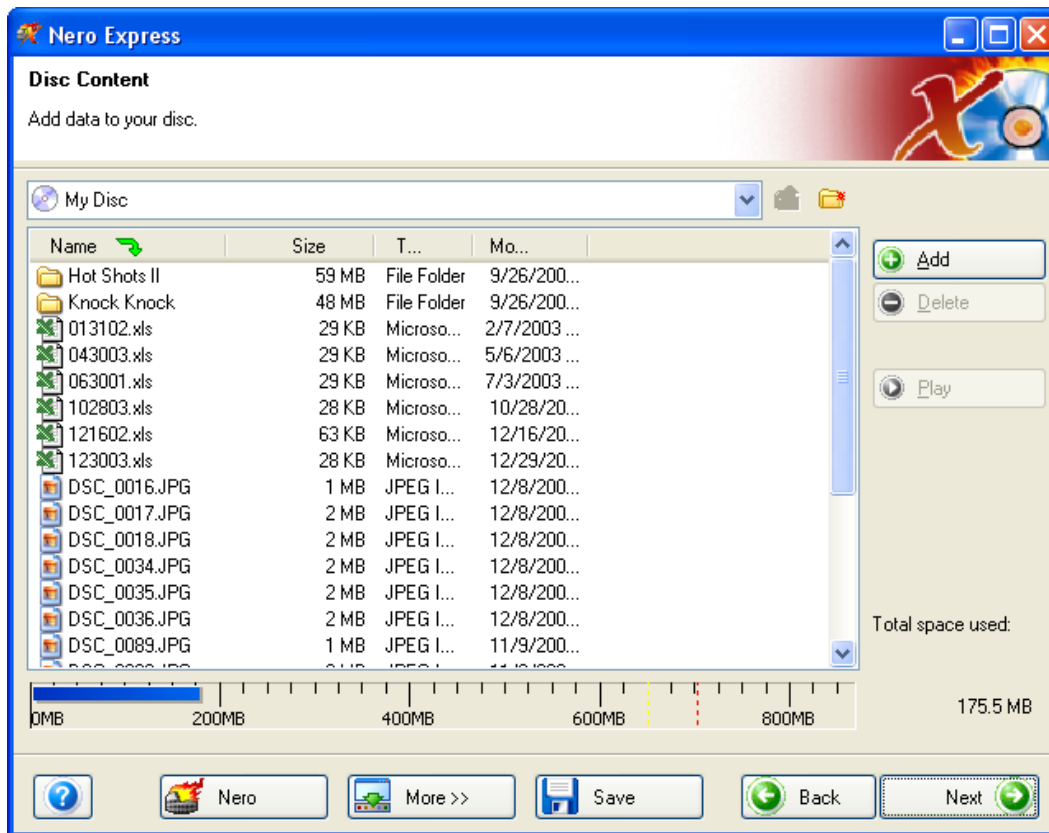
- ❶ Insert a blank, recordable disc in your recordable drive.
- ❷ Clear any messages that appear by selecting **Cancel**.
- ❸ Open Nero Express.
- ❹ Select **Data**, then **Data Disc**. This opens the *Disc Content* window.
- ❺ Click the **Add** button to add the files that you want to burn to your disc. This opens the *Select Files and Folders* window.



- ❻ Browse to the file(s) or folder(s) that you wish to add. Select the file or folder with the left mouse button, then click **Add**. The file or folder will be added, and you will be returned to the *Select Files and Folders* window to add more files/folders. You can select multiple files/folders by holding down **CTRL** while left-clicking your selections.

COMPUTER BASICS

- When you have finished adding files, click **Finished**. You will return to the *Disc Content* screen. The blue bar toward the bottom of this screen shows how much space you have used on the disc.



- Click **Next**. This will take you to the *Final Burn Settings* screen. Make sure that your recordable drive is selected in the **Current recorder** drop down menu.
- Click **Burn**. The *Burning Process* screen appears, and your files are burned to your disc. Your disc drive may open and close again during the burning process. Wait a few moments before removing any discs to make sure that the process is complete.
- A dialog box will appear when your burn is complete. Click **OK** to clear this box, then click **Next**. Your disc will automatically be ejected, and you will return to the opening screen on Nero Express.

Create a Music Disc Using Nero Express

Nero Express can help you turn the music files on your hard drive into a variety of different music disc types.

- *Audio CDs* can be played on standard home and car CD players. Your MP3 files are automatically converted to Audio CD format.
- *Audio and Data CDs* can be played on standard home and car CD players, and they can also contain data files that can be viewed on another notebook.
- *MP3 Discs* can be played on some home and car CD players that support the MP3 format. They can also be played on notebooks. More songs will fit on an MP3 disc, but the disc will not be as compatible with other players as a standard audio CD.
- *WMA Discs* are similar to MP3 discs, but they use the WMA format instead of the MP3 format.

The process for creating a music disc is essentially the same for any of the different music disc formats.

- ➊ Insert a blank, recordable CD in your recordable drive. We recommend using a CD-R for the highest level of compatibility with standard CD players.
- ➋ Clear any messages that appear by selecting **Cancel**.
- ➌ Open Nero Express.
- ➍ Select **Music**, then the type of music CD that you would like to create: Audio CD, Audio and Data CD, MP3 disc, or WMA disc.
- ➎ A window opens where you can add the audio files that you want to burn. Click **Add**.
- ➏ Browse to the file(s) or folder(s) that you wish to add. Select the file or folder with the left mouse button, then click **Add**. The file or folder will be added, and you will be returned to the *Select Files and Folders* window to add more files/folders. You can select multiple files/folders by holding down **CTRL** while left-clicking your selections.
- ➐ When you have finished adding files, click **Finished**. You will return to the *Disc Content* screen. The blue bar at the bottom of this screen shows how much space you have used on the disc.

COMPUTER BASICS

- ⑧ Click **Next**. This will take you to the *Final Burn Settings* screen. Make sure that your recordable drive is selected in the **Current recorder** drop down menu.
- ⑨ Click **Burn**. The *Burning Process* screen appears, and your files are burned to your disc. Your disc drive may open and close again during the burning process. Wait a few moments before removing any discs to make sure that the process is complete.
- ⑩ A dialog box will appear when your burn is complete. Click **OK** to clear this box, then click **Next**. Your disc will automatically be ejected, and you will return to the opening screen on Nero Express.

INTERNET: WORLD WIDE WEB AND EMAIL

Computers around the world can communicate with one another through a common network called the *Internet*. This network lets you exchange email and access websites.

Just like you need an account with your local phone company to make telephone calls, you need to have an account with an *Internet Service Provider* (ISP) to access the Internet.

There are three common ways to connect your computer to the Internet. We recommend that you choose an ISP based on the type of Internet connection that you want to use.

- A *dial-up* connection uses your regular telephone line and the modem inside your computer. This type of connection is widely available and generally inexpensive. However, it is not as fast as *broadband* connections, such as DSL and cable.
- A *DSL* (Digital Subscriber Line) connection is a type of broadband connection. It uses your telephone line and a special modem that connects to the *Ethernet* (network) port on your computer. DSL is faster than dial-up, but it is more expensive and is not available in all areas.
- A *cable* connection is another type of broadband connection. It uses your TV cable line and a special modem that connects to the *Ethernet* (network) port on your computer. Like DSL, cable is faster than dial-up, but it is also more expensive and is not available in all areas.

Setting Up an Internet Account

The following example shows the set up of a dial-up Internet account using PeoplePC. There are many other ISPs available. If you want to use or are already using a different ISP, please contact that service directly for assistance in setting up or transferring your account. More information on setting up an Internet account is available on page 45 of this manual. You can also check ***Start***, then ***All Programs*** for set up programs for other ISPs.

PeoplePC is not included on all Medion notebooks. If your notebook does not include PeoplePC software, please follow the instructions on page 45 for setting up an Internet account with a different ISP.

Setting Up a PeoplePC Dial-up Account

PeoplePC is an ISP that provides dial-up Internet service. The following instructions show the steps for setting up a dial-up account with PeoplePC. This is provided as an example.

- 1 Double-click the PeoplePC icon on your desktop. This will open the PeoplePC setup program.

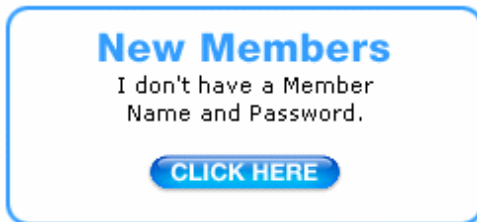


- 2 A window will appear that explains the PeoplePC offer. Click this button to continue.

- 3 A window will appear with information about PeoplePC features. Click **Next** to continue.

CLICK HERE TO GET STARTED

- 4 On the following screen, click the button in the *New Members* box.



- 5 Enter your personal information in the window that appears, and then click **Next** to continue.

peoplepc online
A better way to Internet.

1 Tell Us About Yourself Step 1 2 3 4

op

Try us **FREE** for 30 Days

Why do we need your date of birth?
Why do we need your email address?

First Name: Scott G Last Name: Testcase

Billing Address: 1720 Pacific Ave #2

City: San Francisco State: California Zip: 94109

Home Phone: (415) 776 - 7353 Date of Birth (MM/DD/19YY): 03 / 01 / 19 74

Current Email Address: hscottgilbert@excite.com

NEXT

Already a member? [Click here](#) to download the software or order a disc.

Copyright © 2004, PeoplePC, Inc. All rights reserved.

INTERNET: WORLD WIDE WEB AND EMAIL

- 6 Enter the member name that you want to use, your password, and a password hint, and press **Next** to continue.

The screenshot shows the PeoplePC online registration interface. At the top left is the logo "peoplepc online" with the tagline "A better way to Internet." Below the logo is a stylized "op" smiley face. To the right of the logo is a navigation bar with "2 Create A Member Name And Password" and "Step 1 2 3 4". The main form area contains the following fields:

- Member Name**: (must be 6 - 19 letters, numbers, hyphens and/or underscores). The input field contains "scottg94109" and "@peoplepc.com" is shown to the right.
- Password**: (must be 6 - 19 characters and is case sensitive). The input field contains seven dots.
- Confirm Password**: The input field contains seven dots.
- Select a Password Hint Question**: A dropdown menu with the selected option "What was the name of your first pet?".
- Answer your Password Hint Question**: The input field contains "Rover".

At the bottom right of the form is a blue "NEXT" button. On the left side of the form, there is a sidebar with a "Try us FREE for 30 Days" offer and two links: "Choosing a Member Name and Password" and "What is a Password Hint Question and Answer?". At the bottom of the page, there is a copyright notice: "Copyright © 2004, PeoplePC, Inc. All rights reserved."

- 7 On the following window, select the method you would like to use for payment: check or credit card. Then click **Next** to continue.
- 8 If you selected credit card as the payment type, enter a valid credit card number and expiration date. Click **Join Now** when you are finished.
or
If you selected check as the payment type, enter a valid bank routing number and checking account number. Information on the screen will help you find these numbers on a check. Click **Join Now** when you are finished.
- 9 Next you will be asked to review the PeoplePC legal terms and conditions. Click the **Agree** button if you agree to the terms and conditions.

INTERNET: WORLD WIDE WEB AND EMAIL

- 10 Congratulations! You are now a PeoplePC member. Record your member information here:

Member Name

Password

Email

Order ID

The PeoplePC software will download the remaining pieces of software. You will then be asked to restart your computer. Once you have completed this action, you will have a PeoplePC Online icon on your desktop. You will also have an PeoplePC E-Mail Notification icon. Double-click the **PeoplePC** icon to set up your connection to PeoplePC Online. Once connected, double click the **E-mail Change Notification** to let all your contacts know your new e-mail address.

Setting Up an Internet Account with a Different ISP

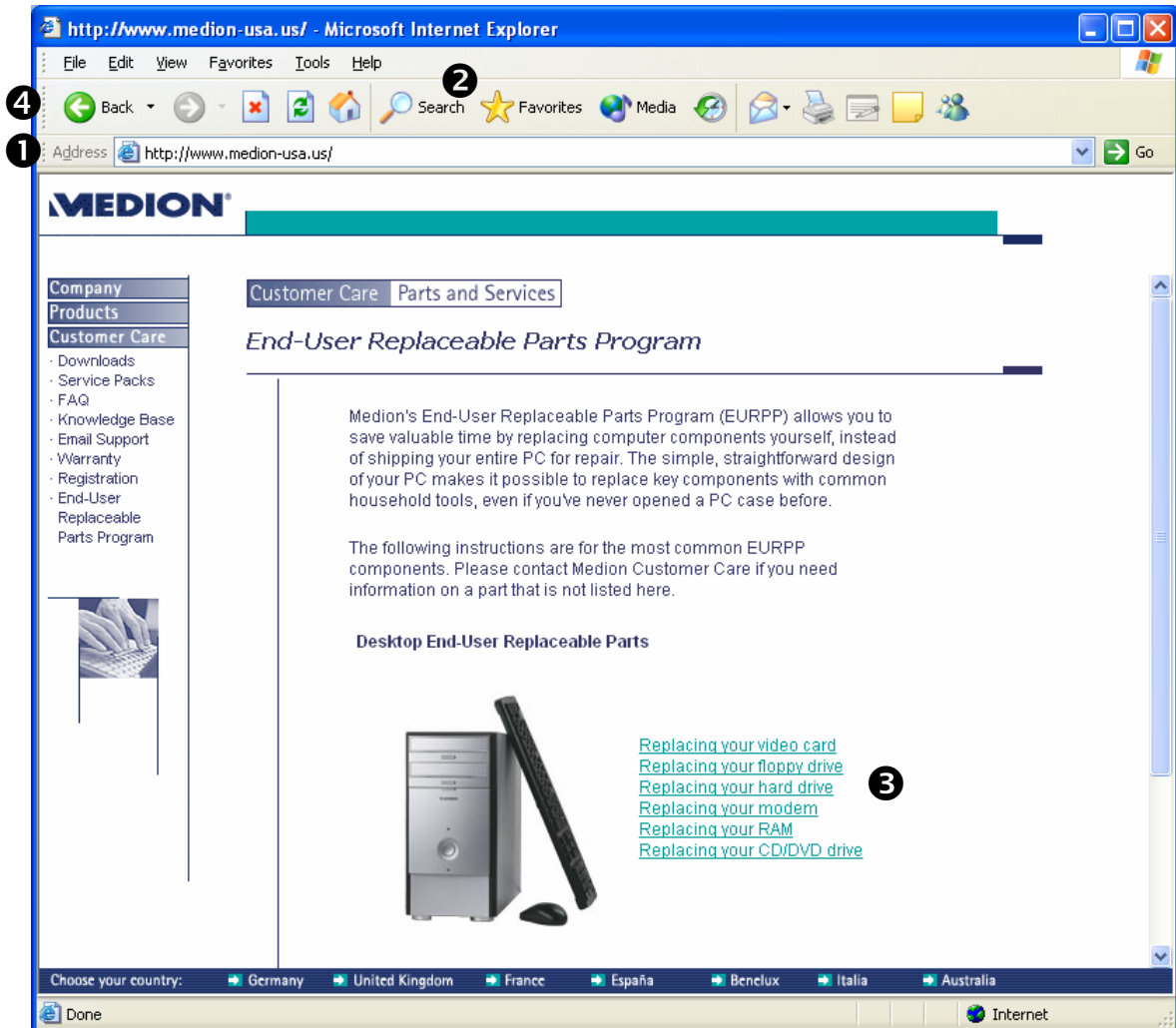
If you wish to use an Internet Service Provider other than PeoplePC or Earthlink, follow these instructions.

- 1 Select **Start**, then **All Programs**, then **Accessories**, then **Communications**, then **New Connection Wizard**. Click **Next** to continue.
- 2 Select **Connect to the Internet**, then click **Next** to continue.
- 3 Select the option that best fits your situation:
 - **Choose from a list of Internet service providers (ISPs)** is best if you do not currently have an account with an ISP.
 - **Set up my connection manually** is useful if you already have an account with an ISP. If you do not have your account name, password, and access phone number handy, make sure to get them from your ISP before you continue.
 - **Use the CD I got from an ISP** is the selection you should use if you wish to use a setup disc that has been provided by an ISP.
- 4 Click **Next** to continue, and follow the instructions on screen.

Accessing Websites

Once you have an Internet account, you are ready to access websites for news, hobby information, recipes, downloads, shopping, financial services, and just about anything you can imagine.

The software that you use to access websites is called a *browser*. Microsoft Internet Explorer is a browser that comes installed on your computer.



Every website has a unique name called a *URL* (uniform resource locator). For example, the URL for Medion's website is *http://www.medion.com*.

If you know the URL for a website that you want to access, you can enter it in your browser's *address bar* ❶ and click **Go**. This will take you directly to the website.

INTERNET: WORLD WIDE WEB AND EMAIL

If you don't know the URL for a website that you want to access, you can search for websites that match a specific subject or topic. Many browsers have a search function ❷ built into their menus.

You can also visit specialized websites for searching the rest of the World Wide Web, such as <http://www.yahoo.com> or <http://www.google.com>. In addition to search tools, these sites may also include a *directory* that you can use to browse for sites, sort of like looking up a phone number in the yellow pages of your phone book.

You can move around different parts of a website, or even between multiple websites, using *hyperlinks* ❸. A hyperlink may be shown as an underlined section of text, a button, or even part of an image. When you move your pointer over a hyperlink, it will change from an arrow to a pointing finger. Then you can left-click to *follow* the hyperlink.

If you want to return to the page you were on before you clicked the hyperlink, you can click the *Back* button ❹ on your browser's menu bar. The Back button takes you to the most recently viewed page.

The *Help* function of your browser should provide more in-depth information about accessing websites.

Using Email

Email stands for *electronic mail*. To send an email, you will need an Internet connection and an email account. Depending on the type of email account that you have, you may also need an email program, such as Microsoft Outlook Express.

Most Internet accounts also come with a free email account. Please contact your ISP if you have questions about setting up the email account for your ISP.

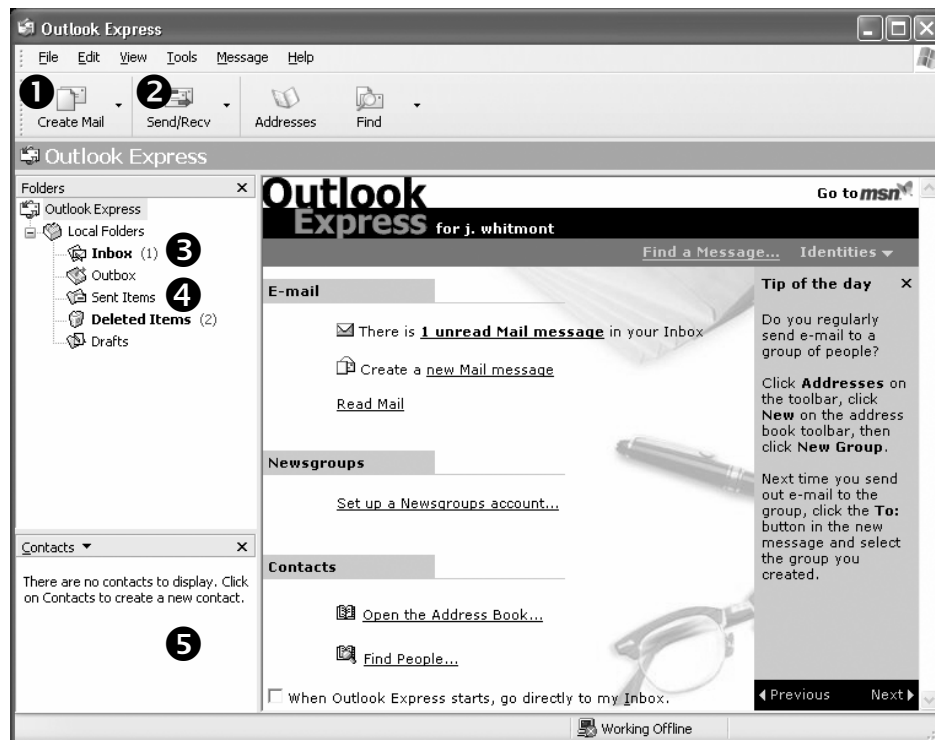
There are also services on the World Wide Web that offer free or inexpensive email accounts. These email accounts often let you use your Internet browser (for example, Internet Explorer) instead of an email program (for example, Outlook Express) to check, manage, and send email.

Email is much faster than regular postal mail. A typical email is sent and received within minutes. You can send email to Aunt Betty any time of the day or night, but she won't see your messages until she logs in to her email account and checks her *inbox*.

Microsoft Outlook Express

Your Medion notebook comes with the Microsoft Outlook Express software program for reading, sending, and receiving email. Your ISP may offer custom software for sending and receiving email. If you are using a web-based email account (for example, a Hotmail account), you may not need an email program at all.

If you are using an email account from your ISP, please contact your ISP for help setting up email. The correct settings vary depending on the type of Internet and email service your ISP provides.



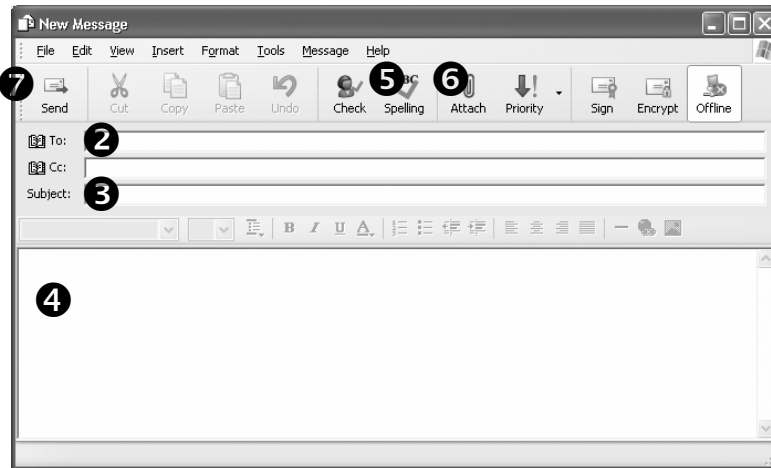
Looking at Microsoft Outlook Express

- ① **Create Mail** button. Click here to write a new email.
- ② **Send/Receive** button. Click here to update your *Inbox* and *Outbox*.
- ③ **Inbox**. Click here to see the email that you have received.
- ④ **Sent Items**. Click here to see the email that you have sent.
- ⑤ **Contacts**. Any contacts that you have added to your address list will appear here.

Creating a New Email Message

INTERNET: WORLD WIDE WEB AND EMAIL

- 1 Click the **Create Mail** button to open the *New Message* window.



- 2 Type the email address of the person who will receive the email in the **To:** field. If you want to send an email to more than one person, enter a comma (,) or semicolon (;) between the different email addresses.
- 3 Enter the subject, or title, of your email.
- 4 Write the body of your email.
- 5 Optional: If you wish, you can click the **Spelling** button to check your email for spelling errors before it is sent.
- 6 Optional: To add a separate file to your email, such as a resume formatted in Microsoft Word, click the **Attach** button. This will open a separate window where you can browse for the file that you would like to attach. Keep in mind that the person who will be receiving your email may have limits to the size of email that they can accept. Anything over 5MB should be avoided.
- 7 When you are done writing your email, press the **Send** button.

For more information about using Outlook Express, click **Help** on the main menu, then click **Contents and Index** to see a list of topics.

MULTIMEDIA: SOUND, PHOTOS, AND MOVIES

Your Medion computer was designed to help you take advantage of today's digital multimedia—from MP3 music files to DVD movies and from digital photographs to home videos.

Software and Disc Type Recommendations

There are many different options available to you for working with multimedia. Sometimes, deciding on the program and the type of disc that you should use for a project can be a daunting task. The following chart shows Medion's recommendations for some common projects. All of the software listed on this chart is included on your Medion system.

Of course, you should always feel free to experiment with the other programs included on your system, or with third-party software purchased separately. These are only recommendations.

To...	Use this software...	And this type of disc...
Play audio CDs or MP3s	Windows Media Player or MUSICMATCH	Commercial audio CD, CD-R, CD-RW
Play a DVD movie	PowerDVD	Commercial DVD movies, DVD-R, DVD+R, DVD+RW, DVD-RW
Copy a CD	Nero Express	CD-R, CD-RW
Create a data CD	Nero Express	CD-R, CD-RW
Create an audio CD	Nero Express or MUSICMATCH	CD-R
Create a MP3 CD	Nero Express or MUSICMATCH	CD-R

Please note that some CDs include copy protection software that will not allow them to be played on your notebook.

Music

Windows Media Player and MUSICMATCH are programs that can help you play, organize, and download music. These programs come pre-installed on your system. There are other programs available for working with music files. Which one you use depends on your personal preference.

MULTIMEDIA: SOUND, PHOTOS, AND MOVIES

The following instructions are for Windows Media Player 9 and MUSICMATCH 8.2. If you have an older version of these programs installed on your notebook, you can update them for free by downloading the latest version from the websites below:

Windows Media Player:

<http://www.microsoft.com/windows/windowsmedia/default.aspx>

MUSICMATCH: <http://www.musicmatch.com>

- ❶ To check the version that is installed on your notebook:
- ❷ Open the program.
- ❸ Select **Help**, then **About [program name]**

A window will appear with information about the version of the program installed on your notebook. This works for many different software programs, not just MUSICMATCH and Windows Media Player.

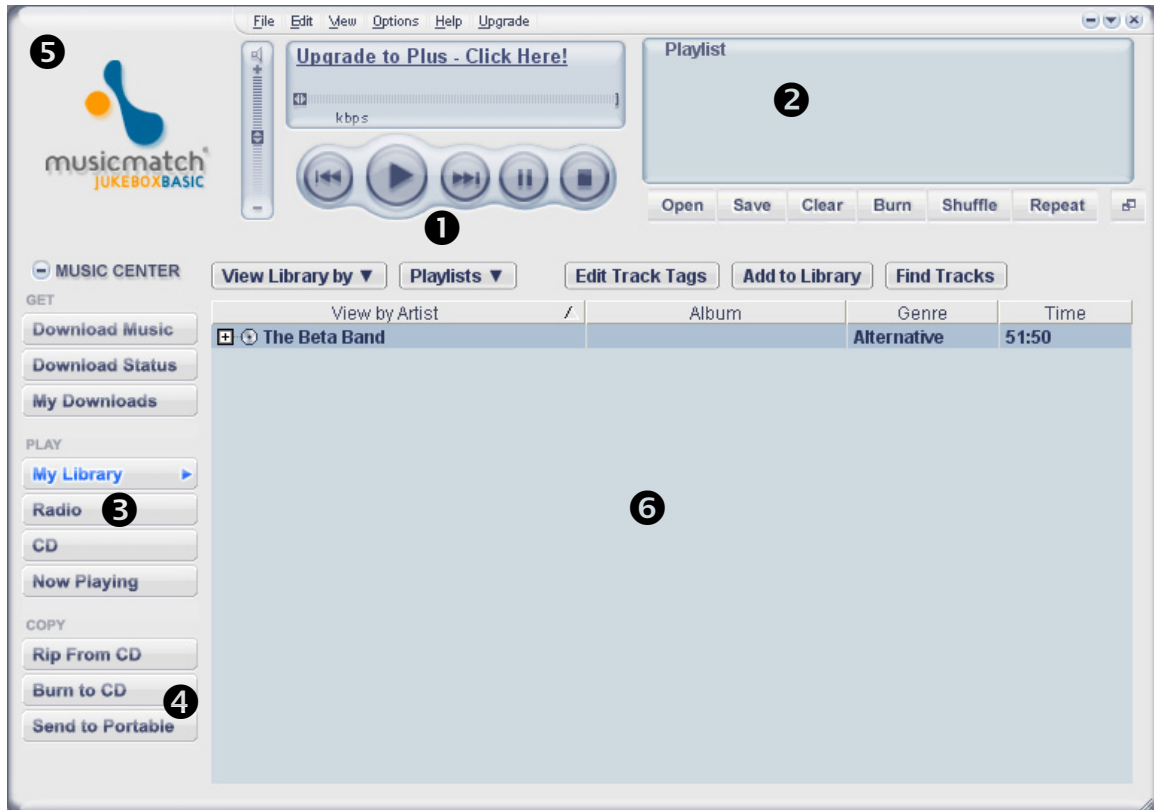
Play Music CDs

Windows Media Player or MUSICMATCH can be used to play music CDs.

- ❶ Insert your music CD into an optical drive.
- ❷ If a dialog box opens with a list of players, select either Windows Media Player or MUSICMATCH.
*** or ***
If a dialog box does not open, click **start**, then **All Programs**, then open either Windows Media Player or MUSICMATCH.
- ❸ If your CD does not begin playing automatically, click **play**.

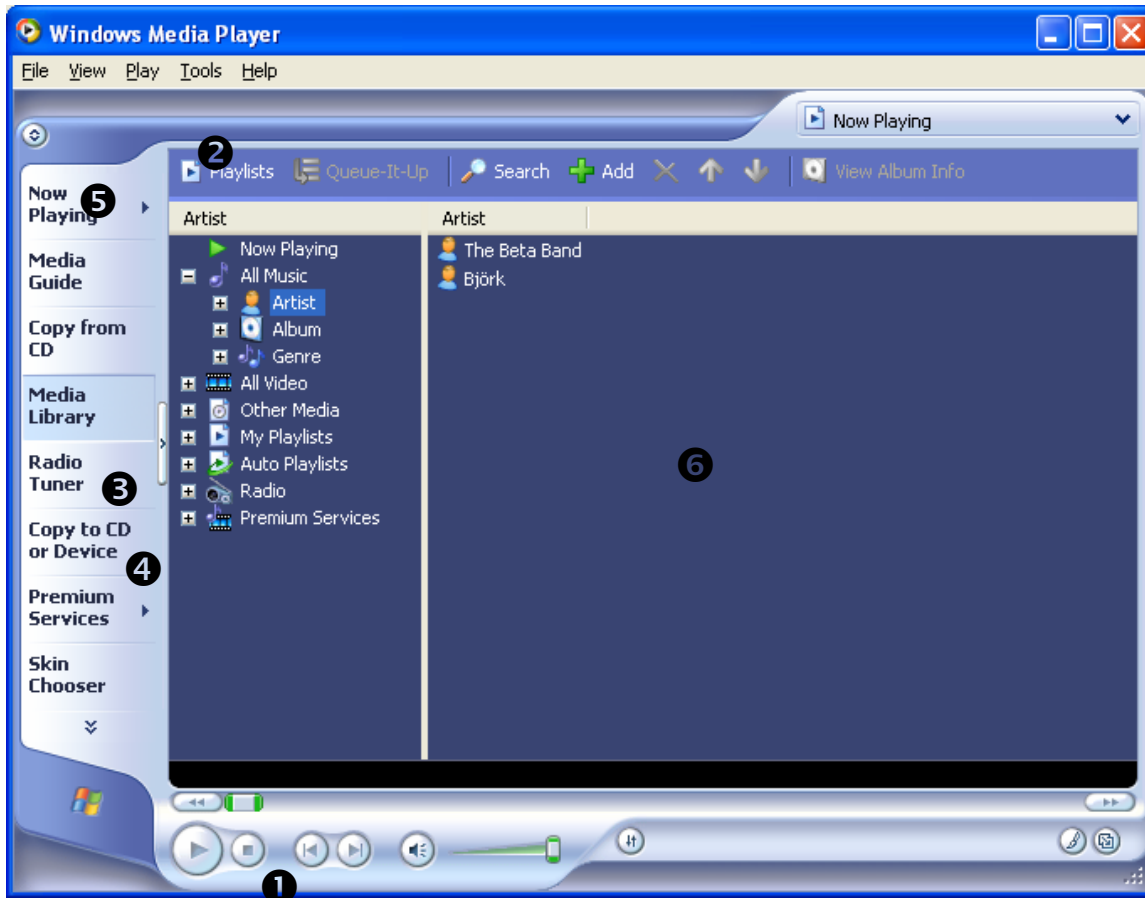
Looking at MUSICMATCH and Windows Media Player

Although the screens may look different, MUSICMATCH and Windows Media Player work very similarly.



- 1 Music controls for play ▶, skip backward ◀◀, skip forward ▶▶, pause ||, and stop ■.
- 2 *Playlists* let you create and save your own custom song lists.
- 3 If you are connected to the Internet, you can use these programs to listen to radio stations.
- 4 Send your playlists to a CD or portable music device.
- 5 Watch visualizations that pulse to the sound of your music (this is in the *Now Playing* section of Windows Media Player).
- 6 Your songs appear in the *library*, where they can be sorted by artist, album, or genre.

MULTIMEDIA: SOUND, PHOTOS, AND MOVIES



Create MP3s

MP3 files are a common way of compressing music files so that they take up less space on your hard drive. You can use the MUSICMATCH software loaded on your Medion notebook to create MP3 files from a music CD. These MP3 files are automatically stored on your hard drive.

If you are connected to the Internet, MUSICMATCH can automatically list the name of the album, artist, and songs for the music that you are recording. This information can be used to name the MP3 files that you are creating. If you wish to use this feature, make sure that you are connected to the Internet before proceeding.

Some music CDs have copy protection software that prevent creation of MP3s from these CDs.

- 1 Select **Start**, then **All Programs**, then **MUSICMATCH**, then **MUSICMATCH Jukebox** to open the MUSICMATCH software.
- 2 Insert your music CD into an optical drive.
- 3 If the CD automatically begins playing, click **Stop** ■ .
- 4 Find the *Music Center* menu on the left-hand side of the MUSICMATCH window. Under *COPY*, click **Rip From CD**. Then select the drive that holds your music CD. This will open the MUSICMATCH *Recorder* window.



- 5 You can remove the check box next to any songs that you do NOT want to convert and save.
- 6 Click the red **Start** button at the bottom of the *Recorder* window.
- 7 You may see a *CD-ROM Configuration* window that says that your CD drive needs to be configured or initialized. Click **OK** to let MUSICMATCH configure your optical drive.

MULTIMEDIA: SOUND, PHOTOS, AND MOVIES

- 8 MUSICMATCH will now record the selected songs on your CD to your hard drive as MP3 files.

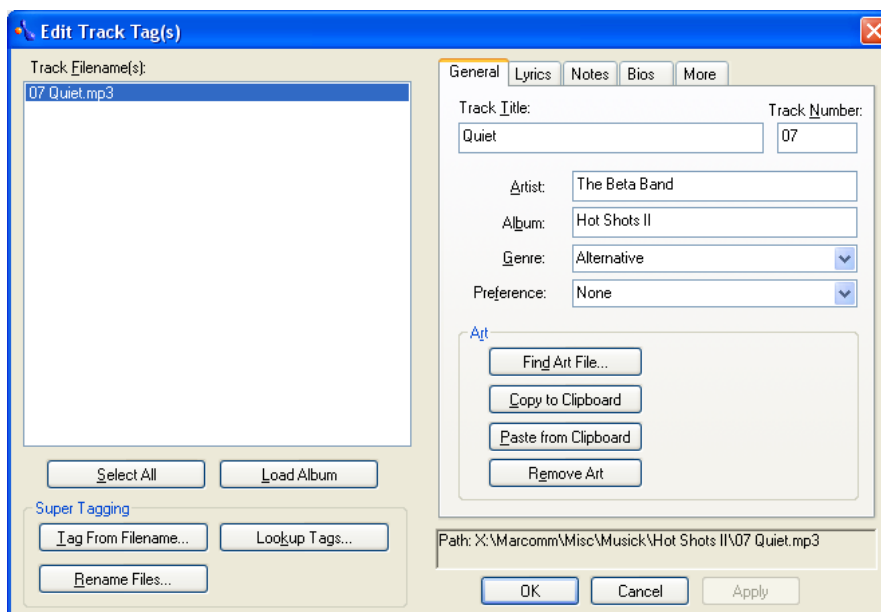
Organize Music

You can use either MUSICMATCH or Windows Media Player to organize your music files.

MUSICMATCH

In MUSICMATCH, your music files can be organized in *My Library*.

- 1 First you must add your music files to My Library. When you use MUSICMATCH to create MP3s from music discs, these MP3s are automatically added to My Library. You can also add songs to My Library by dragging and dropping the files from Windows Explorer, or by clicking the **Add To Library** button.
- 2 Once your files are added to My Library, you can sort them by genre, artist, song title, or other categories. Click **View Library by** to select from a list of categories that can be used to sort your music.
- 3 MUSICMATCH uses *track tags* to identify and sort your music files. To change the title, genre, or other information about a song, right-click the song in My Library and select **Edit Track Tag(s)...** in the menu that appears. The *Edit Track Tag(s)* window will open. When you are finished making changes, click **OK**.



MULTIMEDIA: SOUND, PHOTOS, AND MOVIES

Windows Media Player

In Windows Media Player, your music files are organized in the *Media Library*.

- 1 The first time you select Media Library in Windows Media Player, a dialog box will appear asking if you would like to search your computer for media. If you already have songs saved on your hard drive, this is a quick way to add them to your library. Click **Yes** to search your hard drive for songs.

** or **

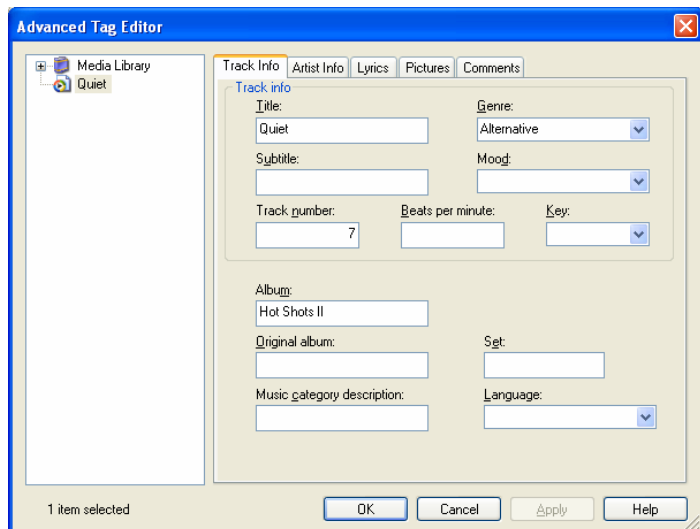
If this dialog box does not automatically appear, or if you want to access this feature in future sessions with Windows Media Player, simply open the program and press **F3** on your keyboard.

- 2 This will open the *Add To Media Library By Searching Computer* dialog box. You can use the options in this dialog box to specify where and how you want Windows Media Player to search for your music files. Click the **Help** button on this screen for more information. When you are finished adjusting the settings, click **Search**.

- 3 A progress bar will appear. When the search is completed, click **Close** to clear the dialog box.

- 4 To see the music that you've added to your Media Library, click **All Music** on the left side of the screen. Click the small **+** symbol next to All Music to see different options for viewing your music files.

- 5 Like MUSICMATCH, Windows Media Player also uses track tags to identify and sort your music files. To change the title, genre, or other information about a song, right-click the song and select **Advanced Tag Editor**. This will open the *Advanced Tag Editor* window, where you can update and add information about a song. When you are finished making changes, click **OK**.



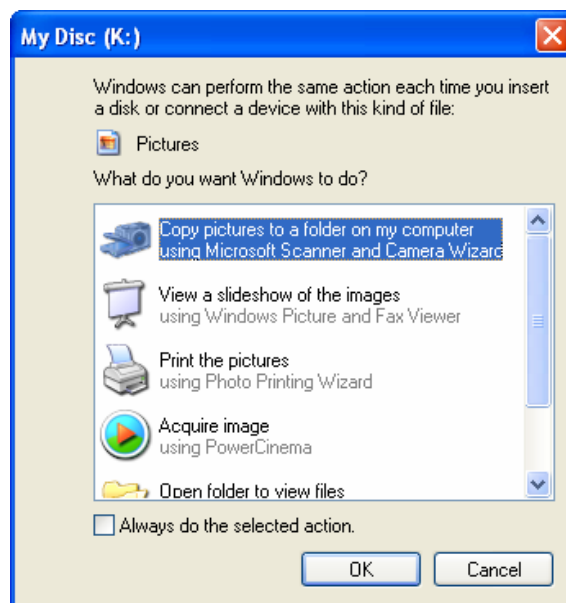
Photos

Moving Images from a Digital Camera to Your Notebook

Most digital cameras store images on a *memory card*. If the memory card used by your digital camera is one of the types supported by the Medion card reader, then you can use it just like a floppy disk to transfer images. This method does not require special drivers, nor does it require that your camera be on while you transfer images.

Please check the separate Specifications Sheet to see whether your notebook includes a card reader, and the types of cards it supports.

- 1 Turn off your digital camera.
- 2 Remove the memory card from your camera (see the instructions for your camera for help with this step).
- 3 Insert the card in the appropriate memory card slot on your card reader.
- 4 After a moment, a window may open that lists a series of actions that Windows can perform with picture files. Select ***Copy pictures to a folder on my computer using Microsoft Scanner and Camera Wizard*** and follow the simple instructions on screen.



MULTIMEDIA: SOUND, PHOTOS, AND MOVIES

- 5 If the action window does not open, double-click **My Computer**.
- 6 Double-click on the icon for the type of memory card that you are using. You may need to open several folders on the memory card before you find your images.
- 7 Drag the images from your memory card to a folder on your computer.
- 8 Don't forget to put the memory card back in your camera when you have finished!

If your digital camera does not use a memory card supported by your Medion card reader, or if your notebook does not include a card reader, you will need to follow the instructions that came with your camera to connect it to your notebook and transfer images. Typical setup instructions might look like this:

- 1 Install a driver from a CD-ROM.
- 2 Connect your camera to the notebook with a USB cable.
- 3 Turn your camera on, and make sure that it is set to the correct mode.

Please contact your camera manufacturer if you have questions about using your camera with your Medion notebook.

Creating Photo Slideshow Discs using PowerProducer

You can use the PowerProducer software included with your Medion notebook to create digital photo slideshows that can be recorded to CD or DVD. These discs can be played on other computers and many conventional DVD players.

Step 1: Disc Settings

- 1 If you have not already done so, follow the instructions above to move the digital images from your camera to your notebook.
- 2 Click **Start**, then **All Programs**, then **PowerProducer**, then **PowerProducer** to open the PowerProducer program.
- 3 Once the program is open, select **Produce Movie Disc**.
- 4 Select the output disc format **VCD**
VCD is a lower-quality video format that can be saved to CD-R or CD-RW. It can be played on some conventional DVD players.
- 5 Select the **Country**. This is the country where your disc will be played. This is important because TVs in different countries sometimes use different video formats. USA is the default.

MULTIMEDIA: SOUND, PHOTOS, AND MOVIES

- 6 Select the **Video Quality**. Your Medion notebook has enough power to record at the highest quality.
- 7 Click **Next**. This is the green arrow pointing to the right at the bottom of the screen. The green arrows let you move back and forth between the PowerProducer screens to change your selections.

Step 2: Develop Your Slideshow

- 1 You should now see the *Capture/Import Content* screen. Under *Extra Features* on the left side of the screen, click **Create Slideshows**.
- 2 You should now see the *Create Slideshows* screen. Click **Create an Album**. This will open a dialog box where you can browse for the images that you would like to include in your slideshow. You can select multiple images in a folder by holding the **CTRL** key while you click on the images. Click **Open** and wait for the images to be imported into PowerProducer. The image(s) that you selected will appear on the film strip at the bottom of the screen.



- 3 To add more photos to your slideshow, click **Add Files to Album**, select the images, and click **Open**.
- 4 To change the order in which your photos appear, simply click and drag them on the film strip at the bottom of the screen.

MULTIMEDIA: SOUND, PHOTOS, AND MOVIES

- 5 *Optional:* To use an MP3 as background music for your slideshow, click this symbol:



This will open the background music screen, where you can select a song and adjust the music settings.

- 6 *Optional:* To change how long a photo remains on screen, select the photo on the film strip, then enter the number of seconds that you would like it to be displayed under **Slide Duration**.
- 7 When you are finished arranging your slides, click the **green checkmark** to return to the *Capture/Import Content* screen. Click **Next** to move to the *Preview* screen.
- 8 *Optional:* To change the way that menus will appear on a VCD, click the **Authoring** button for more options.

Step 3: Test and Burn Your Disc

- 1 On the *Preview* screen, click on the buttons of the on-screen remote control to test your slideshow before burning it to disc. When you are satisfied with your slideshow, click **Next**.
- 2 Make sure there is a blank disc in the drive. Remember that you can record to an "R" disc only once. You will not be able to add to or copy over an "R" disc once you have burned something to it.
- 3 Decide whether to include PowerDVD Player on your disc. You can include PowerDVD Player to make sure that your disc will play on computers that do not already have software for movie disc playback. Including PowerDVD player may take up more space on your disc. It will not affect playback on home DVD players.
- 4 Click the **Finish** button to make your disc:




Movies

Playing a DVD Movie

Medion has included the award-winning PowerDVD software for playing movies on your notebook.

- 1 Insert your DVD.
- 2 If a dialog box opens with a list of players, select **PowerDVD**.
** or **
If a dialog box does not open, click **Start**, then **All Programs**, then **PowerDVD**, then **PowerDVD**.
- 3 If your movie does not begin playing automatically, click **play** ▶ in the center of the control wheel.



If your notebook has two drives that can play DVDs (for example, a DVD-RW drive and a DVD drive), PowerDVD may recognize only one of the drives automatically. To view DVDs from the other drive, press **CTRL + O** or click the **Select Source** button , then choose the drive you wish to use.

Regional Playback Information for DVD

The playback of DVD movies includes the decoding of MPEG2 videos, digital AC3 audio data, and the deciphering of CSS protected contents. CSS (sometimes called copy guard) is the name of a data protection program incorporated by the movie industry as an action against illegal copies.

Among the numerous regulations for CSS licensees, the most important ones are the country-specific playback restrictions. In order to facilitate the geographically restricted release of movies, DVD titles are released for certain regions. Copyright laws require the restriction of each DVD movie to a certain region (usually the region in which it is sold). DVD movie versions can

MULTIMEDIA: SOUND, PHOTOS, AND MOVIES

be published in several regions, but the CSS regulations require that each CSS decipherable system may be used only in one region.

The decoding software included with your notebook may be changed for regional DVD decoding up to five times, after which the drive will play DVD movies only for the region setting last entered. Changing the region code after that is not covered by the warranty.

CHANGING HARDWARE AND SOFTWARE

Your Medion notebook includes everything you need to get started right away. However, we have also made it easy to add third-party hardware and software so you can customize your Medion notebook to meet your specific needs.

Adding Software (Programs, Games, etc.)

During software installations, important files can be changed or even deleted. Medion recommends that you set a Windows XP recovery point before installing software. Instructions and additional information about Windows XP recovery points can be found in the *System Recovery* section of this manual.

For specific installation information, refer to the documentation that came with the software program. Here is a typical installation procedure.

- ➊ Load the software program installation disc in the optical drive.
- ➋ Most installer programs start automatically after a few moments. If the installer program does not start automatically, you can manually start it by double-clicking **My Computer**, and then double-clicking the drive letter where you loaded the software program installation disc.
- ➌ Follow the instructions given by the program.

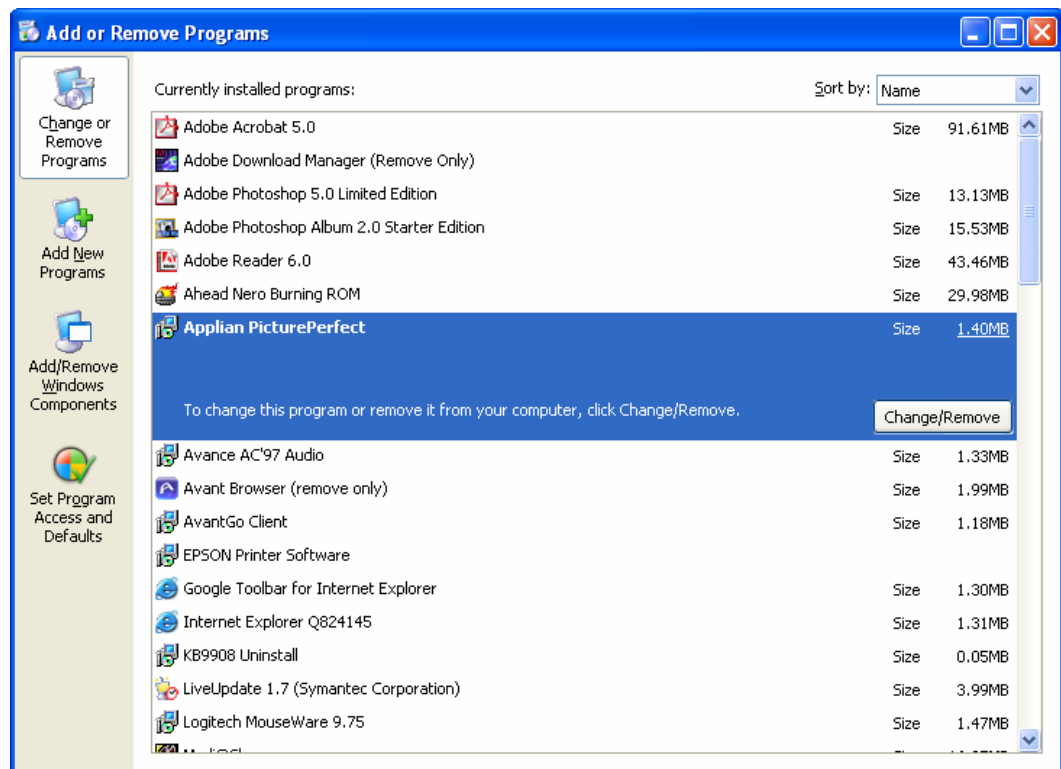
Digital Signatures

When installing software or drivers, you may receive the message "The software you are installing has not passed Windows Logo testing to verify its compatibility with Windows XP." Although the software lacks the digital signature, it may work properly. Click on ***Tell me why this testing is important*** to get detailed information. Click on ***Continue Anyway*** to continue to install your software.

Removing Software Programs

Removing a software program is not as simple as deleting a folder on your hard drive. Although this will certainly stop the program from working, it will leave stray parts of the program that can clutter up your system and reduce your system's performance. Instead, always use Windows' *Add or Remove Programs* feature to get rid of software that you don't want on your notebook.

- ❶ Click **Start**, then select **Control Panel**, then **Add or Remove Programs**.
- ❷ A list of the programs installed on your computer will appear. Select the program you would like to remove, then click the **Change/Remove** button.



- ❸ A dialog box will appear. Confirm that you want to remove the program by clicking **Yes**.
- ❹ Follow the instructions on screen.

Adding Peripherals (Printers, Scanners, etc.)

Most modern peripherals are very easy to install. Simply follow the instructions that came with your device.

In general, there are two steps to adding any peripheral to your notebook.

- ❶ First, you must make sure that your hardware is connected correctly. Make certain that you have located the correct port on your computer and that all plugs are firmly inserted.
- ❷ Second, you will need to install the correct *device driver*. A driver is a piece of software that lets the notebook and the peripheral communicate with each other. Some drivers come pre-loaded as part of your operating system, but some will need to be installed from a disc that came with your peripheral. If you have misplaced the disc that came with your peripheral, you may be able to download the correct driver from the manufacturer's website.

If you connect a peripheral device and it is not automatically recognized by Microsoft Windows XP, try the *Add Hardware Wizard*.

- ❶ Select **Start**, then **Control Panel**.
- ❷ If you are in Category View, click **Switch to Classic View**.
- ❸ Double-click **Add Hardware**.
- ❹ Follow the instructions on screen.

Please contact the manufacturer of your peripheral device if you have any questions about its setup or use.

NETWORKING

A network is a system of two or more computers connected together. Networks can be used to share an Internet connection, files, or peripheral devices such as printers. You can also use a network to pit your skills against your friends and family in popular multi-player games. There are two basic types of network, *wired* and *wireless*.

Wired Networks

A wired network requires that all computers and peripherals on the network be connected with a physical cable, commonly called Cat 5 cable.

Each computer on the network will need a network, or Ethernet, port. If one of your computers did not come with an Ethernet port, you will have to add an Ethernet card (or Ethernet PC card for notebooks) in order to connect the computer to your network. Ethernet comes in different speeds, 10Mbps (standard Ethernet), 10/100Mbps (Fast Ethernet), and 10/100/1000Mbps (Gigabit Ethernet). Your Medion notebook uses a 10/100 Fast Ethernet connection.

You will also need an Ethernet router, switch, or hub. A router should have a port for connecting a cable or DSL modem, support for dynamic IPs, a built-in firewall, and enough ports for all of the computers and devices on your network. Switches and hubs do not generally provide support for dynamic IPs or firewall features.

Setting Up a Wired Network

Although every network is slightly different, here is the basic procedure for setting up a wired network using a router. If you are using a switch or hub instead of a router, you may first need to contact your ISP to receive multiple IP addresses, which may incur an additional charge.

- ❶ Turn off and unplug all of the devices that will be used on your network.
- ❷ If you are using a DSL or cable modem, connect this to the router with Cat 5 cable. Make sure that you are using the correct port, usually labeled *uplink*.
- ❸ Connect each of the computers that you want to network to the remaining ports on the router with Cat 5 cable.
- ❹ Turn on the computers, your modem, and the router. There should be a row of lights on the router that corresponds to each of the devices

NETWORKING

that are plugged in to it. If a light for one of your connections does not come on, make sure that the cable is connected securely and that the device is on.

- 5 On your Medion notebook, click **Start**, then **All Programs**, then **Accessories**, then **Communications**, then **Network Setup Wizard**, and follow the instructions on screen.
- 6 When the Network Setup Wizard is finished, it will ask if you want to create a network setup disc. This disc can be used to run the Network Setup Wizard on other computers on your network, even if they are running older versions of the Microsoft Windows operating system.

Wireless Networks

A wireless network offers the same benefits as a wired network, but—you got it—without the pesky wires. A wireless network can be extremely useful, especially if you use a notebook at home. Keep in mind that a variety of factors can impact wireless network performance, including the distance between devices, the construction of your home, and electrical interference.

There are a few different wireless standards out there. All of the devices on your network will need to be compatible with the same standard in order for your network to function.

- *802.11a* is generally used only in office settings. It is less likely to receive interference from other home electronics, and it is faster than 802.11b. However, 802.11a has a short range (25 to 50 feet) and the components are generally more expensive.
- *802.11b* is the common standard for hotspots at colleges, airports, and coffee shops. It has a range of 100 to 150 feet. Microwaves and cordless phones may cause interference with an 802.11b network. 802.11b is generally inexpensive.
- *802.11g* is the same speed as 802.11a, but it is compatible with 802.11b. However, if there are also 802.11b devices on your network, it will run at the slower 802.11b speed. 802.11g may also be susceptible to interference from microwaves and cordless phones.

Do not use a wireless LAN in any environment where it may cause interference with critical devices, such as a hospital.

Setting Up a Wireless Network

To connect multiple computers and share a broadband Internet connection with a wireless network, you will need a *wireless router*. Your cable or DSL modem connects directly to the wireless router with Cat 5 cable. Your wireless computers connect to the wireless router via radio waves.

Because the procedure for setting up a wireless network varies based on the equipment that you are using, you should always follow the instructions that came with your wireless access point to set up your wireless network.

For more information on networking, please see the Help and Support Center accessible from the *Start* menu.

Setting Up a Mixed Wired/Wireless Network

If you are networking both wired and wireless computers, you have a couple of options. If you already have an existing wired network with a router, you can purchase a wireless access point and connect it to an open port on your router. In this case, all of your wireless computers will communicate with the network through the wireless access point.

Or, if you don't already have a wired router, you can purchase a wireless router that has a wired switch/hub built into it. That way you can have any wireless computers connected to the wireless router, and you can add any computers that don't have a wireless network controller to the built-in switch/hub on the wireless router.

The best source of help and information when setting up your wireless or mixed wired/wireless network is the manufacturer of your wireless router or wireless access point. Please contact the manufacturer of your wireless networking equipment for help with your wireless network.

NOTEBOOK AND DATA CARE

Proper care of your notebook can help extend its working life and protect your important files.

Backing Up Data

Back up your data regularly to external media such as CDs, DVDs, or floppy disks. Windows XP provides both a *Backup* program and a *Files and Settings Transfer Wizard* for this purpose. To use these tools, click the **Start** menu, then choose **Accessories**, then choose **System Tools**.

Maintenance Programs

You can avoid some hardware and software errors with use of two Windows XP programs: *Disk Defragmenter* and *Disk Cleanup*. To use these tools, click the **Start** menu, then choose **Accessories**, then choose **System Tools**.

Disk Defragmenter

Disk defragmenter reorganizes the files on your hard drive. This can improve hard drive performance. Running the disk defragmenter program can take a considerable amount of time. Make sure that you are logged off of any network before running disk defragmenter. Do not use your mouse or keyboard while running disk defragmenter or you may reset the process.

Disk Cleanup

Disk cleanup deletes unnecessary files to free up space on your hard drive. You will have the option to choose which types of files to delete, such as temporary Internet files or files in the recycle bin.

Scheduling Tasks

The *Scheduled Task Wizard* lets you set specific times that you want maintenance programs, such as disk defragmenter, to run. This way you can make sure that the maintenance programs are completed without interfering with your notebook use. However, your notebook must be on in order to run scheduled tasks. If you set a task to run at midnight, but you turned off your notebook when you went to bed at eleven, your task will not run.

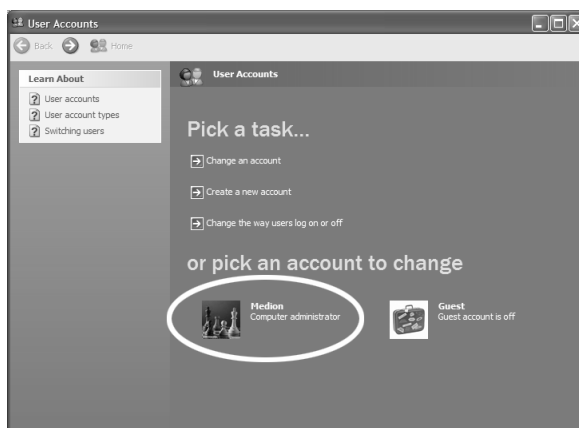
To schedule a maintenance task:

- ① Select **Start**, then **All Programs**, then **System Tools**, then **Scheduled Tasks**.
- ② Double-click **Add Scheduled Task** to open the Scheduled Task Wizard.
- ③ Click **Next**, then select the program that you want to schedule.
- ④ Follow the instructions on the screen.

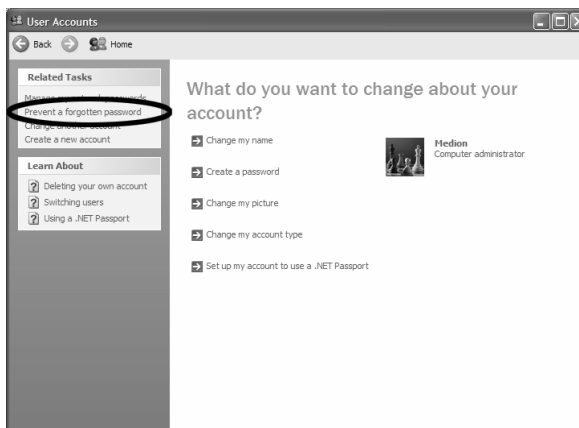
Password Reset File

You should create a password reset disk and keep it in a safe place in case a you forget your password. To create a password reset disk:

- ① Select **Start**, then Control **Panel**, then **User Accounts**. Click on the icon for your account.



- ② Select Prevent **a forgotten** password on the left side of the window.



- ③ Follow the instructions on the screen.

TROUBLESHOOTING

First Steps

Many common problems can be solved very quickly and easily by following these simple steps.

- ❶ Check that the notebook is plugged in, that the AC outlet is providing power and that the surge protector or power strip is turned on.
- ❷ Check that there is no disc in the floppy drive, and no bootable disc (for example, the Application & Support disc) in any optical drives.
- ❸ Check that there is space remaining on your hard drive.
- ❹ If the problem occurred while installing or removing a peripheral, check that you performed all tasks as instructed and review the documentation for the peripheral.
- ❺ If the problem occurred while using a software program, check the printed documentation or online help for the program.

Troubleshooting Common Problems

A CD or DVD Will Not Play

- ❶ Make sure that the disc has been inserted properly, and that the label side is facing up.
- ❷ Check to see if the disc needs to be cleaned. Always clean discs by wiping from the center to the edge—never use a circular motion. Use only cloths made especially for cleaning discs.
- ❸ Try a different disc. Sometimes discs become flawed or scratched and cannot be read by your PC.
- ❹ If you are trying to play a music CD, make sure that the volume is turned up and that speaker cables are connected correctly.
- ❺ If you are trying to play a DVD movie, check that the regional code of the DVD matches the regional code of your DVD drive. The regional code for the United States and Canada is 1.
- ❻ If Restart your computer to make sure it is not a temporary memory error.
- ❼ In some cases, the disc may not play because of copy protection software.

A CD Recording Failed

- ❶ Close all other programs and don't perform any other tasks while making your recording.
- ❷ Reduce the recording speed.
- ❸ Make sure that you have enough room on the disc to which you are trying to record.
- ❹ Make sure that you have enough space on your hard disk drive.

TROUBLESHOOTING

Hard Disk Drive Problems

If you suspect that there is a problem with your hard drive, run Check Disk to scan the drive for errors.

- ❶ Double-click **My Computer**.
- ❷ Right-click the drive that you want to check, and select **Properties** in the menu that appears.
- ❸ Select the **Tools** tab.
- ❹ Under *Error-checking*, click **Check Now**.
- ❺ In the dialog box that appears, click **Start**. Check Disk will scan the selected drive and notify you of any errors.

Hardware Device Problem

- ❶ Make sure that all cables are correctly and firmly attached.
- ❷ Make sure that the manufacturer's instructions are carefully followed during device setup.
- ❸ Check for device driver problems:
 - a. Select **Start**, then **Control Panel**. If you are in Category View, select **Performance and Maintenance**.
 - b. Click/double-click **System** to open the *System Properties* window.
 - c. Select the **Hardware** tab, then click **Device Manager**.
 - d. Check the list for an exclamation point on a yellow circle. If this icon is next to any of your devices, you may need to reinstall the driver.
- ❹ To reinstall the driver, first use Windows XP Device Driver Rollback to replace the faulty driver with a previously installed version. Then install the new driver. Drivers for hardware that came with your system can be found on the Medion website at www.medion.com. For other drivers, please contact the manufacturer of your device.
 - a. Select **Start**, then **Control Panel**. If you are in Category View, select **Performance and Maintenance**.
 - b. Click/double-click **System** to open the *System Properties* window.
 - c. Select the **Hardware** tab, then click **Device Manager**.

- d. Right-click the device with the driver that you want to roll back, then select **Properties** on the menu that appears.
- e. Click the **Drivers** tab, then click **Roll Back Driver**.

Keyboard Character Repeats

- ❶ Make sure that nothing is pressing against or resting on the keyboard.
- ❷ Press each key to loosen any that might be stuck, then restart your computer.

Modem Does Not Dial or Connect

- ❶ Make sure that the modem cable is plugged into the modem port, not the network port. These ports are very similar in appearance. The separate Specification Sheet that came with your PC shows the location of both ports.
- ❷ Use a telephone that you know to be working to check that the telephone line is getting a dial tone. Also check that there is not an excessive amount of noise on the line, as this will impact your modem's ability to operate, especially at high speeds.
- ❸ Make sure that you are using a modem cable that is less than six feet long.
- ❹ If the telephone line being used is shared with another telephone or modem, make sure that someone else is not using the line.
- ❺ If you have services such as call waiting, make sure that they are temporarily disabled before using the modem. Your telephone company can provide you with a code for this.
- ❻ If you have voice mail, make sure all messages are cleared before using your modem to remove any message notification alerts.
- ❼ If you have an answering or fax machine that is on the same line, disconnect it.
- ❽ Check that your modem dialing properties are set correctly.
 - a. Click **Start**, then select **Control Panel**. If you are in Category View, click **Printers and Other Hardware**.
 - b. Click or double-click **Phone and Modem Options**, then select the **Dialing Rules** tab.

TROUBLESHOOTING

- c. Select the location from which you are dialing, then click **Edit**. Confirm that all settings, such as your area code, are correct, then click **OK**.
- 9 Perform a *hyper terminal* test to check that your modem is working.
 - a. First, make sure that all cables are connected correctly and that you are using a working telephone line.
 - b. You may also need to adjust the modem volume. You will be using sound to verify that your modem is working. See *Modem Volume Is Too Loud/Too Soft* below in this manual.
 - c. Select **Start**, then **All Programs**, then **Accessories**, then **Communications**, then **Hyper Terminal**.
 - d. A dialog box will appear asking if you want to make Hyper Terminal your default Telnet program. Click **No** to clear this box and continue.
 - e. In the *Connection Description* dialog box, enter "test" as the name for your connection, then click **OK**.
 - f. If your modem is not working, you may see an error message that reads *Windows has reported a TAPI error use the phone and modem options icon in the control panel to make sure that a modem is installed, then restart hyper terminal*. If you see this message, contact Customer Care. If not, continue with the following steps.
 - g. In the *Connect To* dialog box, enter the number for any telephone. A separate line in your home or your mobile telephone number is ideal because you will be able to hear it ring if the test is positive. Once you have entered the number, click **OK**.
 - h. In the *Connect* dialog box, click the **Dial** button.
 - i. If your modem is working and everything is connected properly, you should now hear a dial tone. The telephone for the number you entered should ring.

Modem Volume Is Too Loud/Too Soft

- 1 Select **Start**, then **Control Panel**. If you are in Category View, click **Printers and Other Hardware**.
- 2 Click/double-click **Phone and Modem Options** and select the **Modems** tab.

- ③ Select your modem, then click **Properties**.
- ④ Select the **Modem** tab, then adjust the **Speaker volume**.
- ⑤ Click **OK** until all dialog boxes are closed.

Non-System Disk Error Message

- ① Remove the floppy disk from the floppy drive and restart your PC.

Not Enough Memory Error Message

- ① Close all programs and restart your computer.

Printer Does Not Work

- ① Make sure that all cables are firmly connected and that the printer is receiving power.
- ② Check that the printer is set to *online*. Many printers have an online/offline button that you may need to press.
- ③ Check that you have selected the correct printer in the printer setup, or set the printer as a default printer.
 - a. Select **Start**, then **Control Panel**. If you are in Category View, select **Printers and Other Hardware**.
 - b. Click/double-click the **Printers and Faxes** icon.
 - c. Right-click on the printer that you want to use, then select **Set as Default Printer**.
- ④ Check your printer port and cable for bent or broken pins.
- ⑤ Reinstall or update the printer driver. If you no longer have the disc that came with your printer, or if the driver from your disc is not working, check the printer manufacturer's website for an updated driver.
- ⑥ Turn the printer off for at least ten seconds and then turn it back on. Often, this will clear the memory and resolve many common printing problems.

TROUBLESHOOTING

Software Program “Hangs”

If a software program that you are running stops responding to the mouse or keyboard, you can close it using the *Task Manager*.

- ➊ Press **CTRL + SHIFT + ESC**.
- ➋ Select the *Applications* tab.
- ➌ Select the program that is not responding and click **End Task**.

Speakers Make No Sound

- ➊ Make sure that all cables are firmly connected and that the speakers are receiving power. If your speakers are built in to your monitor, make sure that a sound cable is connected between your PC and monitor in addition to the monitor (VGA) cable.
- ➋ Make sure that the volume controls on your speakers, your system, and the software program that you are using are turned up.
- ➌ Disconnect any headphones that may be attached to your PC. Use of the headphones port automatically mutes the front speakers.

Video Capture Problems

If your video camera does not appear in the “Video Devices” list:

- ➊ Check that the cables are connected correctly.
- ➋ Check that the camera is on and receiving power.
- ➌ Check that the camera is in VCR or playback mode.
- ➍ Check that the correct video source is selected under Video Devices.

If you can capture video but not sound:

- ➊ Check that a sound cable is connected correctly.
- ➋ Check that the correct sound source is selected. If you are using the front sound connections, use *Aux* as the sound source. If you are using the rear connections, use *Line In* as the sound source.

Contacting Medion Customer Care

If the troubleshooting steps in the previous section do not resolve your issue, please try Medion USA's online support website at ***www.medionusa.com***.

Here you will find drivers and updates for your product, a searchable Knowledge Base containing additional articles on common issues, and ways to contact Medion USA Customer Care.

If you decide to contact Medion USA Customer Care, please have the following information available:

- The model of your computer.
- A list of hardware upgrades made to the computer after purchase.
- A list of peripherals that are attached to the computer.
- A list of software that is installed on the computer.
- The software you were using when the issue occurred.
- Any error messages that may have appeared in conjunction with the issue.
- Are you able to repeat the issue?
- A list of troubleshooting steps you performed before contacting Customer Care.

SYSTEM RECOVERY

Before performing a recovery, you should review the “Troubleshooting Common Problems” section in this manual to see if you can resolve the problem. If not, it is possible that a software file required by Windows XP to operate the PC was damaged or deleted. If this is the case, there are two strategies for recovery:

- **Restoring Microsoft Windows XP using Windows XP System Restore**

This type of recovery is usually very quick and will solve most typical problems that occur after an unsuccessful installation of an application, device, or driver has caused instability in the system.

- **Restoring the factory settings using the Application & Support CD provided by Medion**

There are several options for recovery available using the Application & Support CD, including the ability to restore your entire system to its original factory settings.

Restoring Microsoft Windows XP

Windows XP System Restore allows you to set *recovery points*. This feature enables you to take a snapshot of the current system configuration, to which you can return should an unsuccessful installation of an application, device, or driver cause instability in the system.

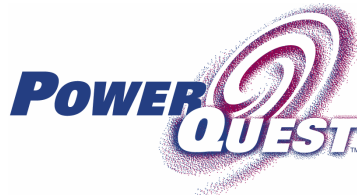
While Windows XP automatically creates recovery points, you can also set them manually. In addition, you can configure the maximum amount of memory used for this.

To use System Restore to set recovery points or restore your system, click the **Start** menu, then choose **All Programs**, then choose **Accessories**, then choose **System Tools**, then choose **System Restore**. Select the task that you would like to perform and follow the on-screen instructions. For detailed information, refer to Windows XP Help and Support.

System Restore includes various functions to help ensure that your PC and installed applications and devices work correctly. These functions assist you in solving the problems that might occur by adding, deleting, or replacing files required for proper functioning of Windows XP and your software and devices. The restore function you use depends on the type of problem or error.

In general, it is a good idea to set a recovery point before installing a new software program or driver. If the system becomes unstable during or after the installation, you can usually return to a workable configuration without deleting newly created documents. If Windows XP System Restore does not solve your problem, refer to the next section, *Restoring the Factory Settings*.

Restoring the Factory Settings



PROVEN SOLUTIONS FOR STORAGE MANAGEMENT

System Recovery powered by PowerQuest.
www.powerquest.com

If your system is not functioning properly and Windows XP System Restore did not solve the problem, then you should use the Application & Support CD provided by Medion to restore your system to working order.

There are three options for restoring your system.

1 *Recovery of start-up files*

Use this option to restore the start-up files. This option is most useful when a virus has corrupted certain files necessary for your computer to boot. It is executed very quickly.

2 *Recovery of system and driver files*

This option will copy the original system and driver files to your hard disk. This feature shouldn't affect your personal files and settings. However, we recommend that you first back up your personal data, just to be safe.

3 *Restoring the factory settings*

This recovery will reset your system to its condition at delivery. ALL DATA ON YOUR LOCAL DISK (C:) DRIVE WILL BE ERASED. If possible, back up your personal data to external media before performing this restore.

Restoring the Factory Settings: Important Information

- Any changes made to the original factory configuration (for example, settings for your display, printers, network, or Internet connection) will be overwritten by this restoration.

SYSTEM RECOVERY

- Any software that you installed after purchasing the PC will be erased and will need to be reinstalled.
- **Everything on the C:\Local Disk partition will be erased.** This includes all of your documents and settings.
- Tampering with the Recovery (D:) hard disk drive or its contents will make it more difficult to restore your PC. **Do not alter, resize, or delete the Recovery (D:) hard disk drive. Also, do not alter or delete the files on the Recovery (D:) hard disk drive.**

Performing the Restore

Each step of the restore replaces an increasing number of files on your hard drive, and therefore takes longer to finish. We recommend that you attempt each of the restore options in order, starting with "Recovery of start-up files." After finishing each restore option, you should test your system to see if the problem is solved. If the problem persists, then try the next restore option.

To make selections in the restore program, use the up and down arrow keys to highlight the option you would like to select, then press **enter** to make the selection.

- ➊ **Prepare your PC:** If possible, copy your data files to external media (such as a floppy disk, CD-R, CD-RW, DVD-RW, or flash card) BEFORE you continue! Also, remove all peripherals (such as printers or USB devices) *except* your keyboard, mouse, and monitor before starting the restore.
- ➋ Insert the *Application & Support* disc and restart (reboot) the PC. **Make sure you use a drive that can read a DVD, such as a DVD-ROM or DVD-RW drive!**
- ➌ Caution: Do not use the *Medion Product Recovery* CD-ROM (a Windows XP CD for restoring Windows XP itself) for restoration purposes. This disc does not restore the original factory setup of the PC.
- ➍ Select the option **Boot from CD-ROM** from the first screen.
- ➎ Use the arrow keys to read through the license agreement, then press the **Esc** key to proceed.
- ➏ Read the information screen that appears, then press **Enter** to proceed.

SYSTEM RECOVERY

- ⑦ Select option **1**, **2**, or **3** to perform a restore (the types of restore are described earlier in this section). Select option **4. Reboot** if you want to cancel the restore process.
- ⑧ The next screen shows information about the type of restore that you have chosen. Select either **Abort** or **Back** to return to the previous screen, or select **Finish** to execute the restore.
- ⑨ When the restore is completed, it automatically restarts the PC. Remove and store the Application & Support CD.

STANDARDS AND LEGAL INFORMATION

Your Medion PC meets the requirements for the following standards.

Electromagnetic Compatibility

This PC meets the following requirements for standards of electromagnetic compatibility and electrical safety.

EN 55022: Information technology equipment - Radio disturbance characteristics - Limits and methods of measurement.

EN 55024: Information technology equipment - Immunity characteristics - Limits and methods of measurement.

EN 61000-3-2: Limits - Limits for harmonic current emissions (equipment input current up to and including 16 A per phase).

EN 61000-3-3: Limits - Limitation of voltage fluctuations and flicker in low voltage supply systems for equipment with a rated current up to 16 A.

- Keep the PC at least one meter (approximately three feet) away from high frequency and magnetic interference sources (for example, televisions, loudspeaker cabinets, mobile telephones, and so on) in order to avoid malfunctions and/or loss of data.
- Only shielded cables shorter than 3 meters (9.84 ft) should be used for the LPT, COM, USB, IEEE 1394, audio, video, and network interfaces with this PC.
- When connecting additional components, please observe the Guidelines on Electromagnetic Compatibility (EMC).
- This class B digital apparatus complies with Canadian ICES-003. Cet appareil numérique de la classe B est conforme à la norme NMB-003 du Canada.

Electrical Safety

EN 60950: Safety of information technology equipment.

- The connection of devices is limited to equipment that complies with EN60950 "Safety of information technology equipment" or EN60065 "Audio, video and similar electronic apparatus. Safety requirements."
- For U.S./Canadian purposes: The PC should be connected only to equipment that complies with UL 60950/CAN CSA 22.2 No 60950.

Ergonomics

EN 29241-3: Ergonomic requirements for office work with visual display terminals (VDTs). Visual display requirements.

EN ISO 9241-8: Ergonomic requirements for office work with visual display terminals (VDTs). Requirements for displayed colors.

STANDARDS AND LEGAL INFORMATION

Noise Emission

ISO 7779 (ISO 9296): Acoustics. Measurement of airborne noise emitted by information technology and telecommunications equipment.

This PC fulfills the requirements of noise emissions according to ISO 7779 with following values.

Operating Mode	Max. Sound power level LWAd (dB/A) (declared according to ISO 9296)
Idling	4.8
Operating	5.2
	Max. Sound pressure level LpAm (dB/A) (declared according to ISO 9296)
At bystander position Idling	40
St bystander position Operating	47

Supplementary

This product was tested in the US and complies with the requirements of the R&TTE Directive 1999/5/EC and carries the CE-marking accordingly.

CE 0682

Macrovision Statement

This product incorporates copyright protection technology that is protected by method claims of certain U.S. patents and other intellectual property rights owned by Macrovision Corporation and other rights owners. Use of this copyright protection technology must be authorized by Macrovision Corporation, and is intended for home and other limited viewing uses only unless otherwise authorized by Macrovision Corporation. Reverse engineering or disassembly is prohibited.

FCC Compliance Statement

This equipment has been tested and found to comply with the limits for a Class B digital device, pursuant to Part 15 of FCC Rules. These limits are designed to provide reasonable protection against harmful interference in a residential installation. This equipment generates, uses, and can radiate radio frequency energy and, if not installed and used in accordance with the instructions, may cause harmful interference to radio communications. However, there is no guarantee that interference will not occur in a particular installation. If this equipment does cause harmful interference to radio or television reception, which can be determined by turning the equipment off and on, the user is encouraged to try to correct the interference by one or more of the following measures.

- Reorient or relocate the receiving antenna.
- Increase the separation between the equipment and receiver.
- Connect the equipment into an outlet on a circuit different from that to which the receiver is connected.
- Consult the dealer or an experienced technician for help.

Changes or modifications not expressly approved by the party responsible for compliance could void the user's authority to operate the equipment. Shielded interface cables, if any, must be used in order to comply with the emission limits.

STANDARDS AND LEGAL INFORMATION

Declaration of Conformity

According to 47CFR, Parts 2 and 15 for Class B Personal Computers:

We: Medion USA, Inc.
Located at: 1001 Bayhill Dr. Ste. 155, San Bruno, CA 94066
Fax : 650.875.1106 (for conformity issues only)

Declare under sole responsibility that the product identified herein complies with 47CFR Parts 2 and 15 of the FCC rules as a Class B digital device. Each product marketed is identical to the representative unit tested and found to be compliant with the standards. Sampling records continue to indicate that the equipment being produced can be expected to lie within the acceptable variation, due to quantity production and testing on a statistical basis as required by 47CFR §2.909. Operation is subject to the following two conditions: (1) This device may not cause harmful interference, and (2) This device must accept any interference received, including interference that may cause undesired operation. The above named party is responsible for ensuring that the equipment complies with the standards of 47CFR §§15.101 to 15.109.

Trade Name: Medion
Type or Model Number: MD95334 – SIM2010
Party Responsible: MEDION USA, Inc.

Executed on 7th of March 2005, at San Bruno

Copyrights

Microsoft, Windows, Windows Media, and the Windows logo are registered trademarks of Microsoft Corporation in the United States and/or other countries. Other company, product, and service names may be trademarks or service marks of others.

© 2005 Medion USA, Inc. All rights reserved.

WARRANTY

MEDION warrants to our customers that this product is free from defects in materials and workmanship as follows: for a period of one (1) year from the date of original purchase, defective parts or a defective product returned to a MEDION repair facility or a MEDION Authorized Service Center ("ASC") for such product, as applicable, and proven to be defective upon inspection, will be exchanged for new or comparable rebuilt parts, or a refurbished product, as determined by the MEDION repair facility or the ASC.

Limited warranty repair or replacement shall not extend the original limited warranty period of the defective product. This limited warranty does not cover any supplies or accessories, including but not limited to: software, blank media, user-installed drives, etc.

EXCLUSIONS: this limited warranty does not apply, and you will have no remedy hereunder with respect to (a) products that have been modified, opened, repaired or otherwise altered, except by MEDION or an ASC, (b) products that have been damaged or destroyed after delivery to the customer, (c) any third party software, interfaces, parts, supplies, peripherals or other products or any defects resulting from use of the product in connection with such third party products, (d) defects resulting from improper or inadequate maintenance, calibration or site preparation, (e) defects resulting from any misuse, abuse, accident, neglect, negligence or any use other than in accordance with the handling or operating instructions provided by MEDION, (f) defects resulting from exposure to unusual physical or electrical stress or from any operation other than in accordance with the published environmental specifications for the product.

TO THE EXTENT ALLOWED UNDER APPLICABLE LAW, THE ABOVE WARRANTIES ARE EXCLUSIVE AND NO OTHER WARRANTY OR CONDITION, WHETHER WRITTEN OR ORAL, IS EXPRESSED OR IMPLIED AND MEDION SPECIFICALLY DISCLAIMS ANY IMPLIED WARRANTIES, INCLUDING ANY IMPLIED WARRANTY OF MERCHANTABILITY OR FITNESS FOR A PARTICULAR PURPOSE AND NO IMPLIED WARRANTY APPLIES TO THE PRODUCT AFTER THE APPLICABLE PERIOD OF THE EXPRESS LIMITED WARRANTY STATED ABOVE. Some countries, states or provinces do not allow exclusions or limitations on the duration of an implied warranty, so the above limitation or exclusion might not apply to you. This limited warranty gives you specific legal rights and you might also have other rights that vary from country to country, state to state, or province to province.

MEDION's limited warranty is valid in any country or locality where MEDION has a support presence for this product and where MEDION has marketed this product. The level of warranty service you receive may vary according to local standards. MEDION will not alter form, fit or function of the product to make it operate in a country for which it was never intended to function.

WARRANTY

TO THE EXTENT ALLOWED UNDER APPLICABLE LAW, THE REMEDIES IN THIS LIMITED WARRANTY STATEMENT ARE YOUR SOLE AND EXCLUSIVE REMEDIES. EXCEPT AS INDICATED ABOVE, IN NO EVENT WILL MEDION OR ITS SUPPLIERS BE LIABLE FOR LOSS OF DATA OR FOR INDIRECT, SPECIAL, INCIDENTAL, CONSEQUENTIAL (INCLUDING LOST PROFIT OR DATA), OR OTHER DAMAGE, WHETHER BASED IN CONTRACT, TORT, OR OTHERWISE. IN NO EVENT SHALL RECOVERY OF ANY KIND AGAINST MEDION BE GREATER IN AMOUNT THAN THE PURCHASE PRICE OF THE PRODUCT SOLD BY MEDION WHICH CAUSED THE ALLEGED DAMAGE. WITHOUT LIMITING THE FOREGOING, YOU ASSUME ALL RISK AND LIABILITY FOR LOSS, DAMAGE OR INJURY TO YOU AND YOUR PROPERTY AND TO OTHERS AND THEIR PROPERTY ARISING OUT OF USE OR MISUSE OF, OR INABILITY TO USE THE PRODUCT NOT CAUSED DIRECTLY BY THE NEGLIGENCE OF MEDION. Some countries, states or provinces do not allow the exclusion or limitation of incidental or consequential damages, so the above limitation or exclusion may not apply to you.

THE WARRANTY TERMS CONTAINED IN THIS STATEMENT, EXCEPT AS LAWFULLY PERMITTED, DO NOT EXCLUDE, RESTRICT OR MODIFY AND ARE IN ADDITION TO THE MANDATORY STATUTORY RIGHTS APPLICABLE TO THE SALE OF THIS PRODUCT TO YOU.

Please note the following:

Be sure to keep your purchase receipt in a safe place. MEDION, at its option, may require a copy of the receipt to validate the warranty period effective date (i.e. date of purchase). Warranty liability only applies to material or factory faults. It does not apply to damage due to breakage, for example, a crack in the housing. Our service includes unit exchange or send-in repair:

Unit Exchange

In locations where Unit Exchange is available, MEDION will send you a replacement PC. You must return the defective PC to MEDION (using the shipping carton that the new one came in.)

Send-In Repairs

In locations where Send-In Repair Service is available, repair service can be obtained by shipping your PC to the MEDION Repair Center. The PC will be repaired and returned to you.

Replacement products may be either new or equivalent in performance to new. MEDION replacement or repaired products may contain remanufactured parts equivalent to new in performance or may have been subject to incidental use.

For either Unit Exchange or Send-In Repairs, you must have an authorized RMA number from Medion support before shipping your defective product.

Out-of-Warranty Support

In addition to providing free technical support during the warranty period, MEDION is also available to support your product after the warranty period has ended. This out-of-warranty support will be provided on a fee basis.

Networking

Medion warrants the operation of network capabilities as follows: Medion will ensure that the network (LAN) port is working properly. No network connectivity issues are supported.

Making Copies of This Manual

This manual contains information protected by law. All rights are reserved. Copyright law prohibits duplicating this information in mechanical, electronic, or any other form, without the written approval by the manufacturer.

INDEX

INDEX

- Audio Out 25
- Aux 88
- Background 42
- Battery operation..... 8, 16
 - Battery Power..... 17
 - Charging the Battery 16
 - Checking the battery level..... 17
 - Inserting the battery 16
 - Removing the battery 16
- Battery Power 17
- Browsing 40
- CardBus 27
- CD-ROM 23
- Charging the Battery 16
- Checking the battery level 17
- Clone desktop 20
- Color 44
- Color Depth 44
- Connection options 29
- Connectors
 - Audio IN 25
 - Audio OUT 25
 - External monitor 19
 - Microphone IN 25
 - Modem 26
 - PC card 26
 - SPDIF..... 25
 - USB 29
- Control Panel ... 36, 39, 42, 75, 76, 84, 85, 86, 87
- Data entry 21
- Delete..... 37
- Desktop 36
- Digital Signature..... 74
- Disc-Drive 23
- Discs
 - Burning46, 83
 - Copying..... 46
 - Data 49
 - Handling..... 23
 - Loading 23
 - Music 51
 - Playing 83
 - Removing 23
 - Type 61
- Disk Cleanup 80
- Disk Defragmenter 80
- Display 19
 - Opening and closing the display 19
- Driver 84, 85
- DVD
 - Playing 72
 - Regional Playback 72
- DVD-Drive..... 23
- Email 31, 53, 58
- Emergency Ejection of a blocked Disc 24
- Ergonomics 94
- Ethernet..... 53, 77
- Extend desktop 20
- External audio ports..... 25
 - 11, 19
 - Clone desktop 20
 - Extend desktop 20
- Files
 - size 40
- Files and Folders 38, 49, 51
- FireWire 94
- Hard drive 22, 39, 45
- HD See Hard drive
- Help and Support 30, 79
- IEEE 1394 11
- Indicators..... 13
 - Num Lock 13
 - Scroll Lock..... 13
- Inserting the battery..... 16
- Installing a PC card..... 27
- Internet . 7, 31, 33, 53, 54, 56, 57, 58, 63, 65, 77, 79, 80, 91
 - DSL 53, 77, 79
- Internet Service Provider 33, 53, 54, 56, 58, 77
- Keyboard 21
- Microphone In..... 25
- Main Operation 15
- Maintenance 80, 84
- Medion Customer Care 89
- Model Number 96
- Modem 26, 85, 86, 87

INDEX

- Monitor42, 87
 - Adjusting 42
- Mouse 21
- MP3 40, 51, 61, 65, 66, 71
- Music
 - Create MP3s 65
 - Organizing 66
 - Playing 62
- My Documents 38, 39, 40
- Network 77
- On/Off button 14
- Optical drive 12
- Password Reset 81
- PC card
 - Installing 27
 - Removing 27
- PC card slot 26
- PCMCIA 26
- PeoplePC 53, 54, 56
- Peripherals 8, 84
 - Adding 76
- Photos
 - Slideshows 69, 70
 - Transferring 68
- Playlist 63
- Power 18, 68, 77
- Power adapter 9
- Power cord 6
- Power management 18
- Power supply 14
 - Battery operation 16
 - Suspend mode 18
- Power Supply
 - Main Operation 15
- PowerProducer 69, 70
- Printer 87
- Reboot 34
- Recovery 74, 90, 91
- Recycle Bin 37
- Removable Storage 39
- Removing a PC card 27
- Removing the battery 16
- Resolution 44
- Restart 34
- Restore 90, 91
- Safety 5, 6, 94
- Safety instructions
 - Battery operation 8
 - Power adapter 9
 - TFT Display safety 6
- Scanner 68
- Scanner and Camera Wizard 68
- Scheduling Tasks 80
- Screen resolution 19
- Screen Saver 42
- Search 40, 67
- Software 41
- Sound card 25
- Speakers 88
- Specifications 68
- Standby mode 18
- Suspend to disk 18
- Task Manager 35, 88
- Temperature 8
- Text Size 43
- Touch pad 21
- Troubleshooting 82, 83, 90
- Universal Serial Bus 29
- URL 57, 58
- USB 12, 40, 69, 79, 94
- Use of PC cards 27
- Video Capture 88
- Views 10, 11, 12
 - Device LED indicators 10, 13
 - Display catch 11
 - Fan slot 11
 - Front side 11
 - IEEE 1394 11
 - LAN Port (RJ-45) 11
 - Left side 11
 - Line out 11
 - Modem Port (RJ-11) 11
 - Open notebook 10
 - Optical drive 12
 - PC card slot PCMCIA 11, 26
 - Right side 12
 - USB port 11, 12
- Volume 41
 - modem 86
- Warranty 97
- Windows Explorer 40, 66
- Windows Media Player .. 41, 61, 62, 63, 66, 67
- Wireless 78, 79
- World Wide Web 53, 58

INDEX