

Content

<u>Safety and Maintenance</u>	2
Safety Instructions	2
Data Security	3
Operating Environment	4
Battery Operation	6
Maintenance	6
Notes on these Operating Instructions	8
<u>Getting Started</u>	9
Components	10
USB Cradle	15
Initial Set-up of the Pocket PC	16
Step 1: Switching on the power	16
Step 2: Charging the Pocket PC Battery	18
Step 3: Installing the Software	19
Step 4: Using the Pocket PC	23
Working with Memory Cards	25
<u>Navigation with optional Memory Card</u>	27
<u>Navigating with the Pocket PC</u>	29
Safety Instructions for Navigation	29
Tips for Navigation	29
Instructions for Car Installation	29
Instructions for GPS-Receiver	30
Contents of the Navigation CDs	30
Software Installation	30
Preparing for Navigation	31
Mounting the Navigation Set in a Car	32
Installation of the Holder of the Pocket PC	32
Installation of the GPS-Receiver	33
First Initialization of the GPS-Receiver	34
Connecting Pocket PC and GPS-Receiver	35
Starting Navigation	36
<u>Customer Service</u>	37
First-Aid in the Event of Malfunction	37
Additional Support	40
Warranty	41
Liability limitations	42
Copying this manual	42

SAFETY AND MAINTENANCE

SAFETY INSTRUCTIONS

Please read this section carefully and follow all the instructions given. This will help ensure reliable operation and extend the service life for your Pocket PC. Store the packaging and the operating instructions in a safe place so that if you sell the Pocket PC you can pass these on to the new owner.

- ◆ Never allow children to play with electrical equipment unsupervised. Children may not always correctly recognize possible danger.
- ◆ **Never open up the housing** of the Pocket PC or the power adapter. These contain no user-serviceable parts. If the housing is opened there is a **danger to life** from electric shock.
- ◆ Do not place **any objects** on the Pocket PC and do not exert any pressure on the display. Otherwise there is a danger that the screen will break.
- ◆ To avoid damage, do not touch the screen with sharp objects. Use only the stylus provided.
- ◆ There is a **risk of injury** if the **display breaks**. If this should occur, use **protective gloves** to pack the broken parts and contact customer support to arrange for disposal. Then wash your hands with soap, since there is a possibility that **chemicals** may have escaped.

Remove the power adapter from the outlet, switch the Pocket PC **off immediately**, or do not actually switch it on, and contact Customer Service...

- ◆ ... if the **power adapter** or the attached **plug become scorched** or damaged.
- ◆ ... if the **housing** of the Pocket PC, the Power Pack or the charging/synchronizing cradle becomes **damaged** or **fluids leak into it**. Components must be checked by Customer Service in order to avoid damage!

DATA SECURITY

- ◆ Every time you update your data make backup copies on an external storage medium. The supplier does not assume liability for data loss or damage to data storage units, and no claims can be accepted for damages resulting from the loss of data or for consequential damages.

UPGRADING/RETROFITTING AND REPAIR

- ◆ Upgrading or retrofitting of your Pocket PC must only be performed by qualified technical staff.
- ◆ If you do not have the necessary qualifications, ensure that this is done by a suitably qualified Service Engineer. Please contact our Service Center if you encounter technical problems with your Pocket PC.
- ◆ In the event repair becomes necessary, please use only our authorized Service Partners.

OPERATING ENVIRONMENT

- ◆ Keep your Pocket PC and all connected devices away from **moisture** and avoid **dust, heat** and direct **sunlight**. Failure to follow these instructions may lead to damage to your Pocket PC.
- ◆ The Pocket PC and its packaging are recyclable.

AMBIENT TEMPERATURE

- ◆ The Pocket PC is most reliably operated at an ambient temperature of between 41°F and 95°F (5°C and 35°C) and at a relative humidity of between 20% and 80% (non-condensing).
- ◆ In the powered down state (power supply: OFF, see page 16) the Pocket PC can be stored at between 32°F and 140°F (0°C and 60°C).
- ◆ The **GPS receiver** is designed for the environmental conditions inside a car. However, store the Pocket PC in a safe location when you leave your car to avoid high temperatures.

ELECTROMAGNETIC COMPATIBILITY

- ◆ When connecting additional or other components the "Electromagnetic Compatibility Directive" (EMC) must be adhered to. Please also note that only screened cable (maximum 10ft) should be used with this Pocket PC.
- ◆ For optimal performance, maintain a distance of at least 10 ft. from sources of high-frequency and magnetic interference (televi-sions, loudspeaker systems, mobile telephones and so on. This will help avoid malfunctions and loss of data.

CONNECTION

When connecting your Pocket PC be sure to correctly observe the following instructions:

POWER SUPPLY

- ◆ The outlet must be in the vicinity of the Pocket PC and must be easily accessible.
- ◆ Only use the mains adapter on grounded sockets at 100 – 240 V~ AC, 50/60 Hz. If you are unsure about the power supply to the place of use, ask the relevant energy supplier.
- ◆ Use **only the power adapter provided** with the reference PSC 05R-050.
- ◆ For additional safety, we recommend the use of a surge protector in order to protect your Pocket PC from damage from spikes or lightning strikes on the power network.

POWER THROUGH CAR ADAPTER

- ◆ The car adapter should only be connected to the lighter socket of a car (car battery = DC 12V_{DC}, **no trucks!**). If you are in any doubt about the power source in your car, contact your car manufacturer.

CABLING

- ◆ Arrange cables so that no-one can tread on them or trip over them.
- ◆ Do not place any items on the cable.

BATTERY OPERATION

Your Pocket PC is operated with a removable battery. In order to prolong the life and efficiency of your battery and to ensure safe operation, follow the instructions below:

- ◆ Batteries cannot withstand heat. Avoid the Pocket PC and the integrated battery becoming overheated. Failure to comply with this instruction may lead to damage to and even explosion of the battery.
- ◆ Use only the original power pack to charge the battery (model PSC 05R-050).
- ◆ Batteries are special category waste. When disposing of the Pocket PC ensure that this is done correctly. Contact Customer Service for more details.

MAINTENANCE

⇒ **Warning:** There are **no user-serviceable** or cleanable **parts** inside the Pocket PC housing.

You can prolong the life of the Pocket PC by taking the following simple steps:

- ◆ Always remove the power plug and all connecting cables before cleaning.
- ◆ Clean the Pocket PC only with a damp, lint-free cloth.
- ◆ Do not use solvents, caustic or gaseous cleaners.

CARE OF THE DISPLAY

- ◆ Avoid scratching the display surface as this is easily damaged.
- ◆ Ensure that no traces of water remain on the screen. Water can cause irreversible discoloration.
- ◆ Use only a soft, lint-free cloth to clean the screen.
- ◆ Do not expose the screen to either strong sunlight or **ultraviolet radiation**.

TRANSPORT

If you wish to transport the Pocket PC follow the instructions below:

- ◆ Following transport of the Pocket PC wait until the unit has acclimatized before using it.
In the case of wide fluctuations in temperature or humidity condensation or moisture may form inside the Pocket PC and this can cause an electrical short-circuit.
- ◆ Use a protective cover (such as a display protection mylar) to protect the Pocket PC from dirt, moisture, shock and scratching.
- ◆ When shipping your Pocket PC use only the original packaging and advise the carrier accordingly.
- ◆ Before traveling ensure that you are aware of the power and communications provision at your destination. Before traveling obtain any power or communications adapters (modem, LAN, etc.) that may be needed.
- ◆ When passing through the hand luggage control at airports, it is recommended that you pass the Pocket PC and all magnetic storage media (external hard drives) through the X-ray system (the machine on which you place your bags). **Avoid the magnetic detector** (the structure through which you yourself pass) or the magnetic wand (the hand device that the security staff use), since this may corrupt your data.

NOTES ON THESE OPERATING INSTRUCTIONS

When using the application programs and the operating system you can use the extensive help functions that are available at the touch of a button. These help functions are made available when you use the Microsoft Windows[®] operating system or the respective application program

AUDIENCE

These operating instructions are aimed at first-time and experienced users alike. The bundled product CD contains a comprehensive instruction manual.

QUALITY

In selecting the components we have aimed for a high level of functionality, simple handling, safety and reliability. A well-balanced hardware and software design allows us to offer you a technologically advanced Pocket PC that will give great satisfaction in both work and leisure use.

SERVICE

Our individual customer care is there to support you when you have questions or problems. Please get in touch – we look forward to helping you. This manual contains a special section on Customer Service starting on page 37.

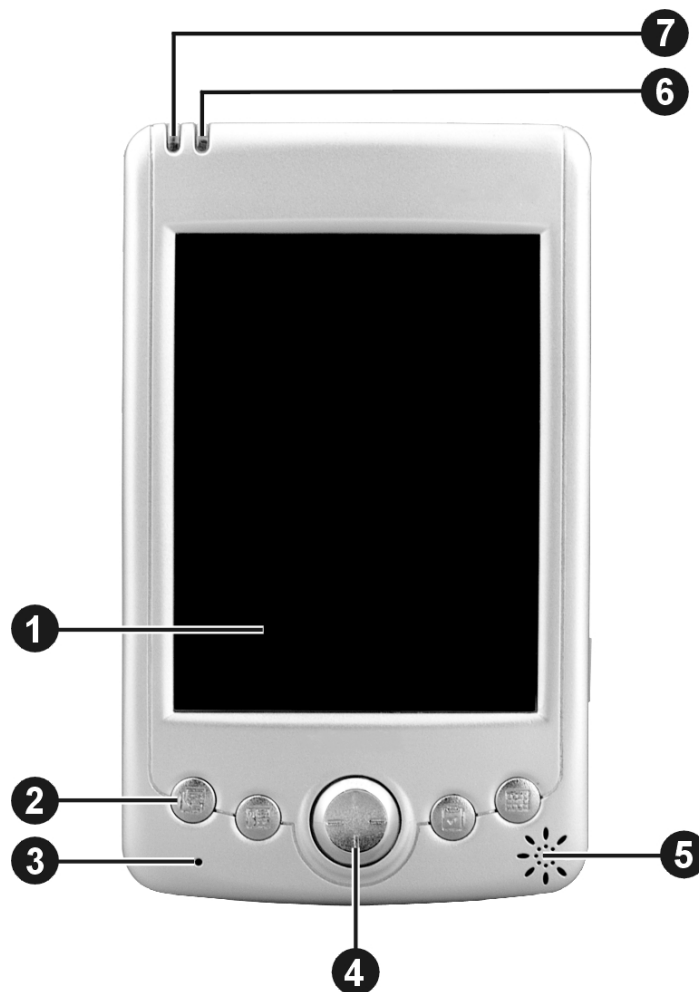
Thank you for your confidence in our products. We are pleased to welcome you as a new customer.





GETTING STARTED

This chapter introduces you to the external components of your Pocket PC and guides you through the process of setting up your Pocket PC for use.

The illustrations on the following pages introduce you to the various buttons, connectors, ports and features of your Pocket PC.

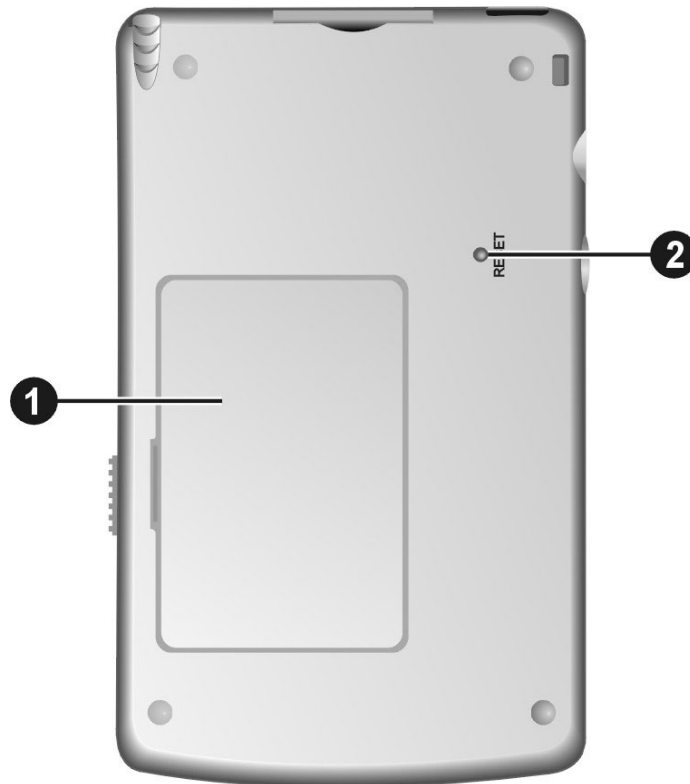
FRONT COMPONENTS



Ref Component	Description
① Touch Screen	Displays the output of your Pocket PC. Tap the screen with the stylus to select menu commands or enter information.
② Program Buttons	Each of the four buttons provides a quick way to run a specific program. By default, they are  Notes ,  Contacts ,  Calendar and  Tasks buttons. The buttons are customizable.

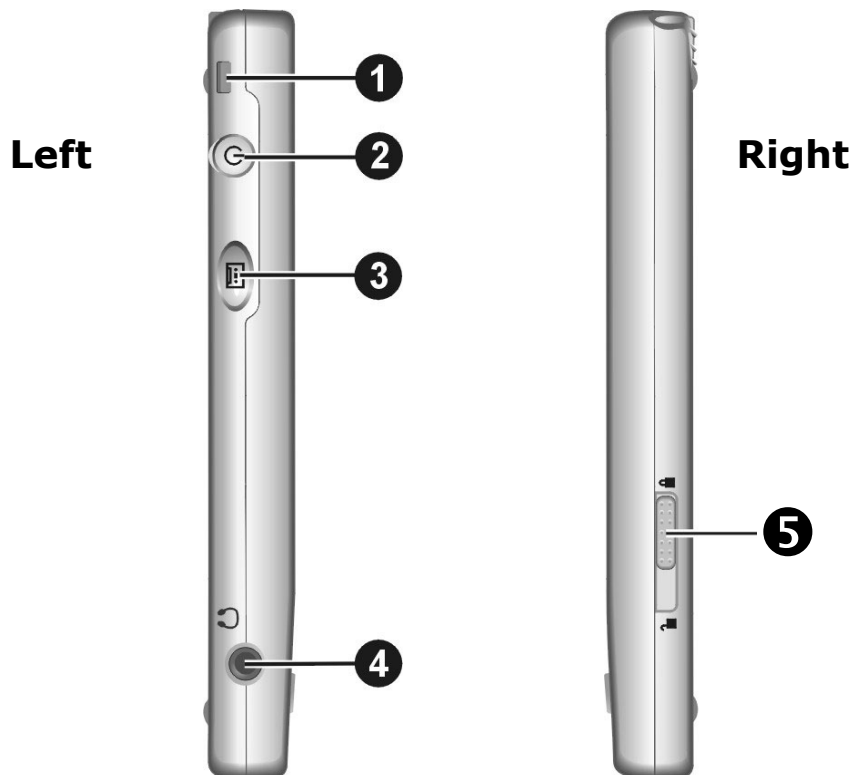
Ref Component	Description
③ Microphone	Receives sound and voice to record voice.
④ Navigation Pad	Moves up, down, left or right by pushing the corresponding area of the pad. Selects by pressing.
⑤ Speaker	Sends out music, sounds and voice.
⑥ Notification Indicator	Flashes in red to inform you of scheduled appointments, alarms and reminders.
⑦ Charge Indicator	Glow in amber to indicate that battery charging is in progress and in green when the battery is fully charged.

BACK COMPONENTS



Ref	Component	Description
①	Battery	<p>Supplies power to your Pocket PC when external power is not available.</p> <p>If you remove the battery the fully loaded back-up battery can keep the data for app. 10 minutes. Keep the Pocket PC connected to the USB cradle for app. 24 hours when you perform the initial Set-up in order to load the back-up battery.</p>
②	Reset Button	<p>Restarts your Pocket PC. (Soft-Reset)</p>

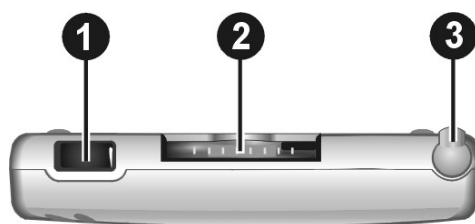
SIDE COMPONENTS



Ref	Component	Description
①	Lanyard Eyelet	Lanyard attaches to this opening.
②	Power Button	Turns your Pocket PC on or off Turns the screen backlight off
③	Record Button	Records voice notes by pressing and holding.
④	Headphone Connector	Connects to a pair of stereo headphones (2,5 mm/0,98”).
⑤	Battery Lock	Locks the battery door.

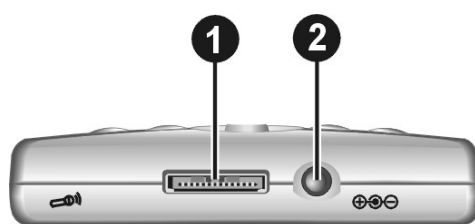
⇒ **CAUTION:** Always keep the battery lock in the lock (🔒) position unless you are removing the battery.

TOP COMPONENTS



Ref	Component	Description
①	IR Port	Beams files to other mobile devices.
②	SD/MMC Slot	Accepts an optional SD (Secure Digital) or MMC (MultiMediaCard) card for removable storage.
③	Stylus	Tap on the touch screen to make selections and enter information. Pull the stylus out of its slot to use and store it in the slot when not in use.

BOTTOM COMPONENTS

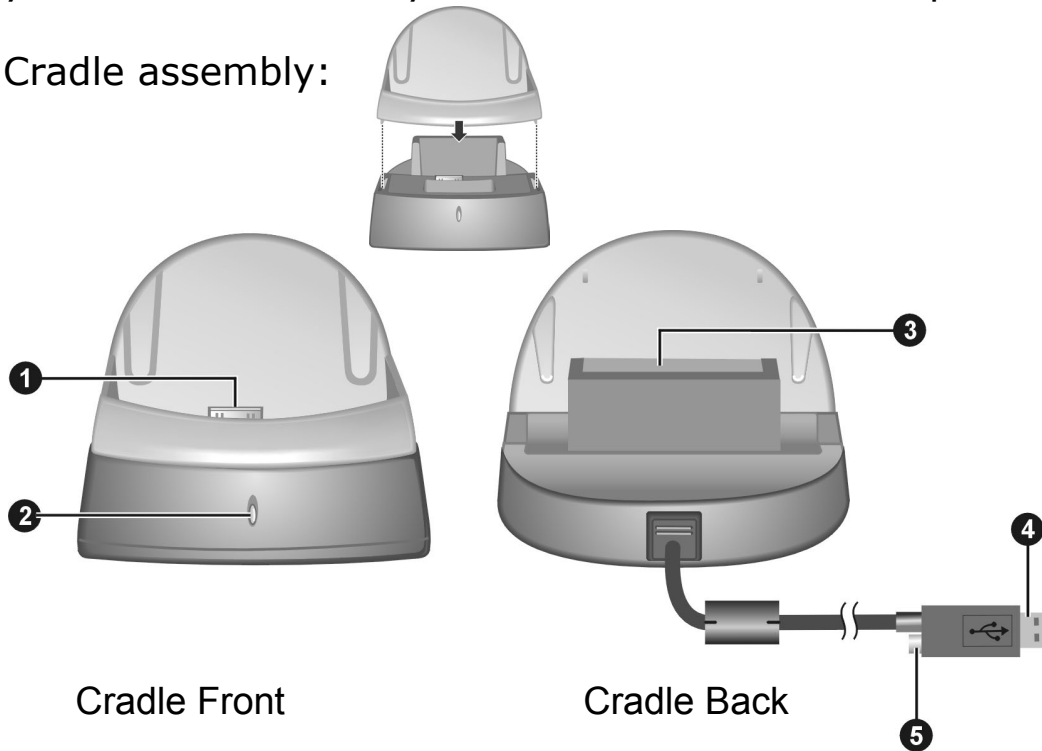


Ref	Component	Description
①	ActiveSync® / GPS-Connector	Connects to your desktop compute for synchronizing data or to GPS-System.
②	Power Connector	Connects to the AC adapter if you are not using the cradle.

USB CRADLE

The USB cradle provides a convenient way to charge your Pocket PC and synchronize data with a computer.

Cradle assembly:




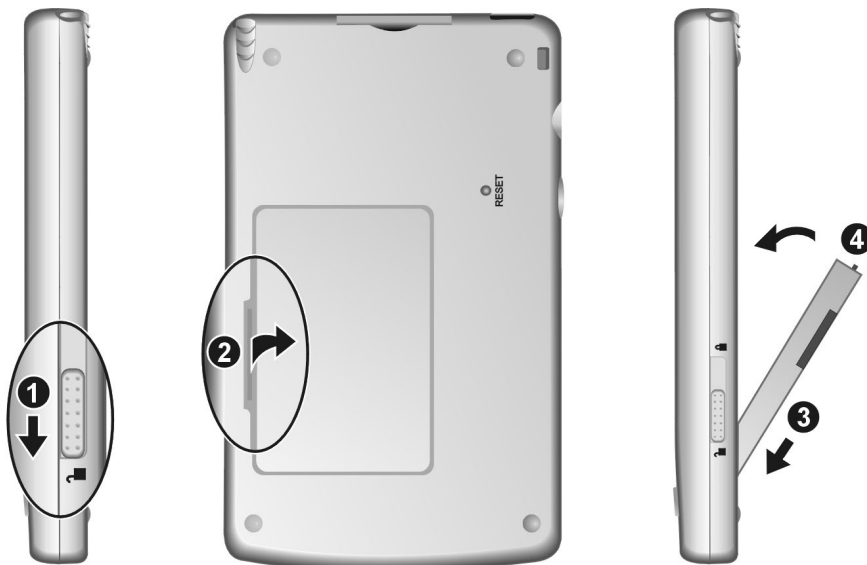
Ref	Component	Description
①	PPC Connector	Connects to your Pocket PC.
②	Battery Charge Indicator	Glowes when the additional battery is being charged and turns off when the battery is fully charged.
③	Battery Connector	Accepts an additional battery (available as an accessory) for charging.
④	USB Connector	Connects to the USB port of a desktop computer for data synchronization.
⑤	Power Connector	Connects to the AC adapter.

INITIAL SET-UP OF THE POCKET PC

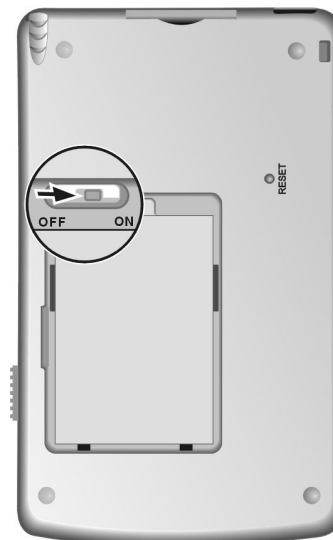
The following guides you step by step through the initial set up of the Pocket PC:

STEP 1: SWITCHING ON THE POWER


1. Slide the battery lock to the unlock () position (**1**) and then open the battery door (**2**).
2. Insert the projected parts of the battery into the battery compartment (**3**) and then fit the battery into place (**4**).



3. The backup battery switch should be set to the ON (right) position for normal operation. Pull out the stylus and use it to slide the battery switch to the ON (right) position.



⇒ **CAUTION:** Always leave the backup battery switch in the ON position unless you need to perform a hard reset. A hard reset will cause the memory of your Pocket PC to be cleared.

4. Replace the battery door and slide the battery lock to the lock () position.
5. The red notification indicator on your Pocket PC will flash for approximately 30 seconds. Then your Pocket PC will automatically turn on. The brand logo appears and after 30 seconds the Pocket PC displays the Windows[®] welcome screen.
6. To begin the “Welcome” Wizard, tap the screen with the stylus and follow the onscreen instructions to complete the wizard. The wizard presents a brief orientation to Microsoft[®] Windows[®] for Pocket PC, helps you align the touch screen and prompts you to select your city and time zone.

⇒ Settings that you now make can be altered later.

STEP 2: CHARGING THE POCKET PC BATTERY

1. Slide the Pocket PC carefully into the charging/synchronization cradle (❶).
2. Connect the power adapter cable to the socket of the charging/synchronization cradle (❷).
3. Plug the power adapter supplied into an easily accessible AC power outlet (❸).

- ▶ The charging indicator lights up orange while charging and lights up green when the Pocket PC is fully charged. Do not interrupt the charging process before the battery has fully charged. This may take a number of hours.
- ▶ **Note:** You can use the Pocket PC while it is charging, but the power supply should not be disconnected during initial set up.
- ▶ **Note:** You can also connect the power adapter directly to the power adapter port of the Pocket PC (see page 14).

Charging indicator



Once the charging display goes out, wait another 5 seconds before removing the power adapter. This time is needed for calibration of the battery.

- ▶ The power adapter can be left connected so the Pocket PC is constantly being recharged while it is in the charging/synchronization cradle. However, the power adapter consumes power even when it is not charging the battery of the Pocket PC.

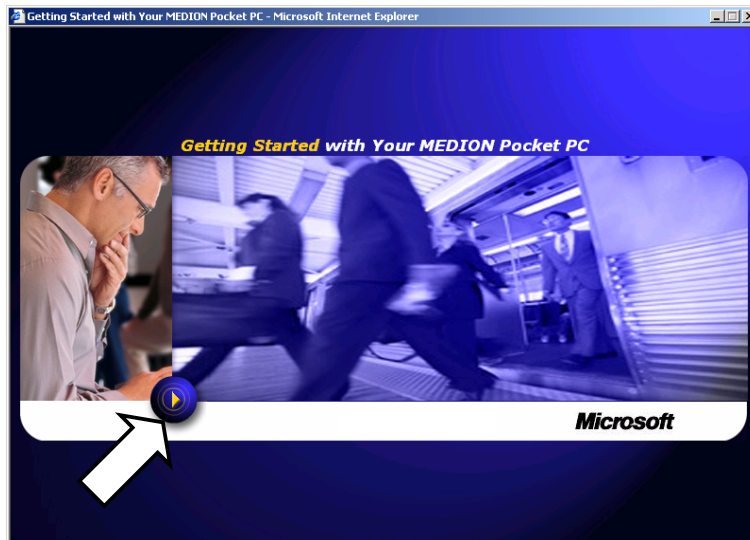
STEP 3: INSTALLING THE SOFTWARE

- ▶ **Warning:** Do not connect the Pocket PC to your PC yet. Follow the step-by-step instructions in order to perform the installation as safely and as simply as possible.
- ▶ **Warning:** When software is installed, important files may be overwritten and changed. Create a suitable backup of your hard drive so you can access the original files in the event of problems.
- ▶ **Windows 2000/XP:** You need to have administrative permissions on your Computer in order to install software. Please log on as administrator.

1. Insert the CD supplied and wait for the program to start automatically.

- ▶ **Note:** If the program does not start automatically, the **Setup** program on the CD must be started.

2. The following window appears with a short introduction. Wait for a few seconds or click the triangle to skip the intro.



4. Click the **Start here** button and follow the instructions on the screen in order to install the necessary software.

INSTALLING MICROSOFT[®] OUTLOOK

For optimum management of your data (e-mails, contacts, dates, etc.) using the Pocket PC, you need the **Microsoft[®] Outlook** program.

The cost of the Pocket PC includes a license for this program which can be found on the CD. If you already have **Microsoft[®] 2002** installed on your PC, continue with the next step for installation of **Microsoft[®] ActiveSync[®]**. Likewise, if you have **Outlook 98** or **Outlook 2000**, perform this installation:

3. Click **Install Outlook 2002**.

▶ On the right of the window a product description appears with further installation instructions.

5. Now click **Install**.
6. A dialog box appears that informs you that a program now has to be installed. Click **OK**.

You are now asked whether you want to open the file or store it on the PC. Select the **Open** option here and follow the instructions on the screen. You will find the **Product Key** on the CD sleeve. Have your Windows[®] CD ready as well in case it is needed.

INSTALLING MICROSOFT[®] ACTIVESYNC[®]

In order to synchronize your data (e-mails, contacts, dates, etc.) between your PC and the Pocket PC, you need the **Microsoft[®] ActiveSync[®]** program.

The cost of the Pocket PC includes a license for this program which can be found on the CD.

▶ If you do not have **Microsoft[®] Outlook 2002** on your PC, please install Outlook 2002 following the directions above.

4. Quit Windows[®] and switch of the PC.
5. **Important:** Remove the Pocket PC from the charging/synchronization cradle.
6. Now plug the cable of the charging/synchronization cradle into a free USB port of the PC.



7. Start Windows[®] and re-insert the CD supplied in order to again display the installation menu you are already familiar with.
8. Click **Install ActiveSync[®]**.

▶ On the right of the window a product description appears with further installation instructions.

7. Now click **Install**.
8. A dialog box appears that informs you that a program now has to be installed. Click **OK**.
9. You are now asked whether you want to open the file or store it on the PC. Select the **Open** option here and follow the instructions on the screen.
10. If testing the connection options, insert the Pocket PC in the charging/synchronization cradle.

▶ The hardware installation wizard now detects a new device and installs a suitable driver. This may take a few minutes. Repeat the connection search if it fails the first time.

11. Follow the instructions on your screen. The program now sets up a partnership between your PC and the Pocket PC. By means of the synchronization your data (e-mails, contacts, dates, etc.) are automatically transferred to your Pocket PC.

INSTALLING THE DOWNLOAD CONNECTION WIZARD

In order to configure your Pocket PC for Internet and intranet access you need the **Download Connection Wizard**. If you do not yet need this function you can install it later on.

1. Click **Install Download Connection Wizard**.

▶ On the right of the window a product description appears with further installation instructions.


2. Now click **Install**.
3. A dialog box appears that informs you that a program now has to be installed. Click **OK**.
4. You are now asked whether you want to open the file or store it on the PC. Select the **Open** option here and follow the instructions on the screen.

STEP 4: USING THE POCKET PC

OPERATING THE POCKET PC

1. Remove the Pocket PC from the charging/synchronization cradle.

In order to execute a function or a program, ...

- use the stylus to tap  **Start** and then the desired option.
 - Press the program keys of the Pocket PC in order to start the desired program. The underlying programs can be defined using **Start** ⇒ **Settings**.
2. Explanations of the operation and functionality of the programs can be obtained from **Start** ⇒ **Help**.

SYNCHRONIZATION BETWEEN POCKET PC AND PC

When you insert the Pocket PC in the charging/synchronization cradle, ActiveSync® is automatically started. The program checks if the Pocket PC is one with which a partnership has already been established. If this is the case the changes that have taken place on the PC and on the Pocket PC since the last synchronization are compared and reconciled.

In the Settings menu of the ActiveSync® program you can define precisely which rules are to be applied during synchronization.

Call up the program Help (by pressing F1) in order to see the effects of the corresponding settings.

If the Pocket PC is not recognized as a partner, restricted guest access is automatically activated that allows, for example, data to be exchanged.

If this should occur even though there is a registered partnership, remove the Pocket PC from the charging/synchronization cradle and switch it off and on again.

Re-insert the Pocket PC in the charging/synchronization cradle in order to restart the identification process. If this still does not work, repeat the process and also restart your PC.

If you have changed the device name in the Pocket PC this may be the cause of this malfunction. Please remember this if you change the name of the Pocket PC under **Start** ⇨ **Settings** .

WORKING WITH MEMORY CARDS

Your Pocket PC supports MMC and SD memory cards.

INSERTING MEMORY CARDS

1. Carefully remove the memory card from its packing (if included). Take care not to touch or dirty the contacts.
2. Insert the memory card into the card slot. The contacts must point towards the slot with the sticker facing upwards.



REMOVING MEMORY CARDS

- ▶ Do not remove the memory card while it is accessed. This could result in loss of data.
1. To remove the card press lightly onto the upper edge until it ejects.
 2. Pull the card out without touching the contacts.
 3. Store the memory card in the packing or in another safe location.
- ▶ Memory cards are very fragile. Take care **not to dirty** the contacts and **not to force** the card.

ACCESSING MEMORY CARDS

Memory cards are normally shown as **Storage Cards** in the **Windows Explorer**.

You can access the memory card like a normal drive and store, rename or delete files.

- ▶ If you also intend to use the memory cards in a PC, you must ensure that a compatible format is used when formatting.
- ▶ Likewise you cannot just copy files onto the memory card. In some cases they must be converted by the **Microsoft® ActiveSync®** program.

NAVIGATION WITH OPTIONAL MEMORY CARD

This option is **only** available when your Pocket PC is fit with a **pre-installed memory card**. In this case you can use the navigation function of your pocket PC without executing the pre-installation on a PC. The memory card contains the navigation-software and is either pre-installed on your Pocket PC or delivered separately.

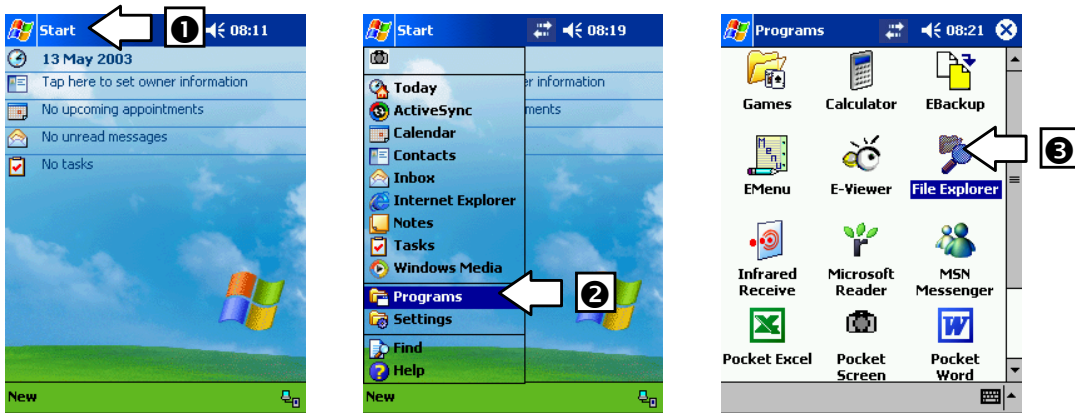
- ▶ Nevertheless, we recommend that you do execute a full **Initial Installation** (see page 16 and later) in order to be able to access additional functions of the Pocket PC.
- ▶ The following installation limits the Navigation to the area which is pre-installed on your memory card.

You must execute these steps in order to use the navigation in your car:

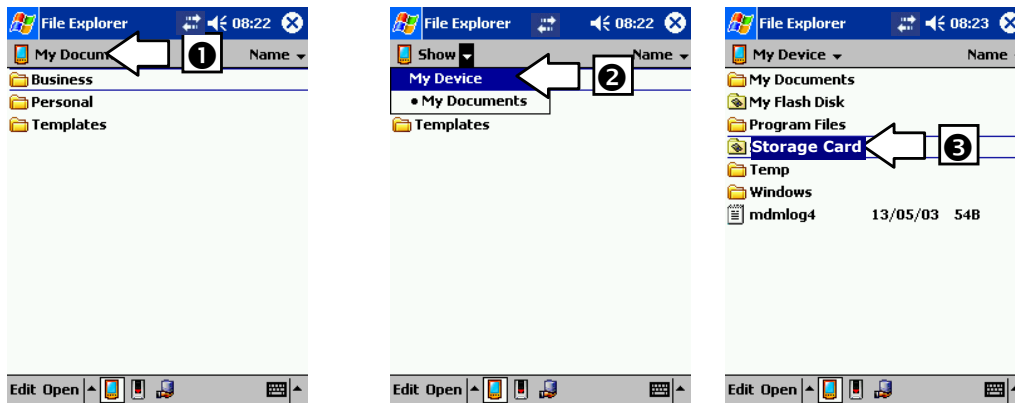
1. Read and adhere to the **safety instructions** on p2 and following and p23 and following.
2. Install the components of the navigation system in your **car**. Follow the instruction on p 29-32.
3. Press the **On / Off** button to start your Pocket PC. If the instructions of **Step 1** (page 16) have not yet been executed, then do it now. The battery of the Pocket PC is charged through the power circuit of the car.
4. Should the MMC card **not be inserted in the Pocket PC**, then insert it into the slot. Please take care, that contacts point towards the slot and the sticker faces towards the front:



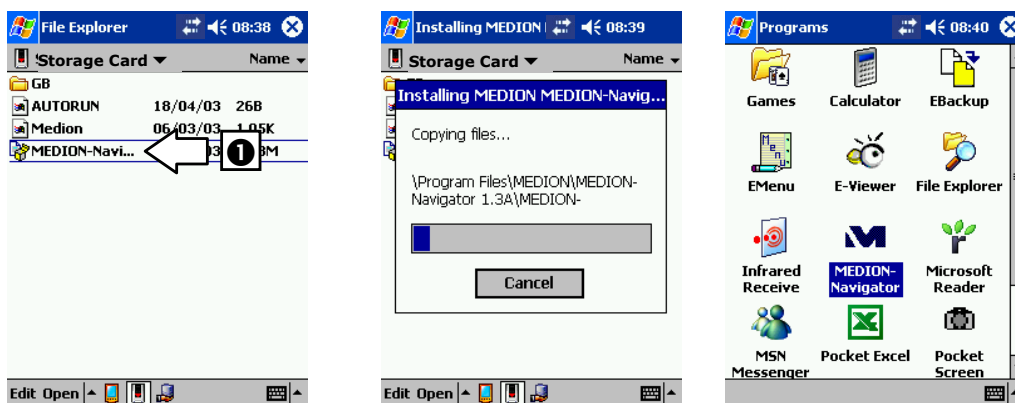
5. Start **File Explorer** :



6. Switch to the **memory card**:



7. Install the navigation program by clicking onto the program **Medion-Navigator**. Then the symbol will appear in the program folder:



8. The navigation software is now installed and can be used as described on page 36.

NAVIGATING WITH THE POCKET PC

SAFETY INSTRUCTIONS FOR NAVIGATION

The bundled product CD contains a comprehensive instruction manual.

TIPS FOR NAVIGATION

- ▶ **Do not manipulate** the navigation system **while driving** to protect yourself and others from accidents!
- ▶ In the event that you do not understand the voice instruction or if you are in any doubt about what to do at the next intersection, then the map or arrow display will provide you with a quick orientation. **Only look** at the display when you are in a **safe driving situation!**
- ▶ **Attention:** The road layout and **driving rules** take **precedence** over the instructions of the navigation system. Only follow the instructions when circumstances and driving rules permit it! The navigation system will guide you to your destination even when you have to deviate from your planned route.
- ▶ Plan routes before you leave. If you want to plan a new route whilst on the road stop driving.

INSTRUCTIONS FOR CAR INSTALLATION

- ▶ When installing the car cradle take care, that the position of the cradle does not pose a safety risk while driving or in case of accidents.
- ▶ Take care that the cable does not impede any safety components.
- ▶ Do not mount the cradle within the operating range of any airbags.

- ▶ The power plug will **consume power**, even if no device is connected. Remove it when not in use to avoid draining the battery.
- ▶ Check all safety equipment in your car after installation.

INSTRUCTIONS FOR GPS-RECEIVER

- ▶ Do not paint or glue things on to the GPS-receiver. Signal reception might be hampered.

CONTENTS OF THE NAVIGATION CDS

Navigation CD 1: MapExport & Maps.

This CD is required to compose your own maps. This CD will be installed on your computer.

Navigation CD 2: Pre-selected Maps and Quick Installation for Pocket PC. (optional)

The folders of this CD contain pre-selected maps, which you simply can copy onto the **optional** memory card using the file manager. These maps are then immediately available.

The folder Quick Installation contains the file Medion-Navigator.cab. Copying this file onto your Pocket PC and then executing it will install the navigation program directly on your Pocket PC (see page 27).

SOFTWARE INSTALLATION



In order to be able to deploy self-defined cards on your Pocket PC you must install the corresponding navigation software on your PC:

1. Before installing the navigation software ensure, that **ActiveSync**[®] is installed, that the Pocket PC is placed in the cradle and that a **connection** is established (see page 21).
2. Place the CD-ROM with the navigation software (**MapExport**) in your CD drive. The installation will start automatically.
3. Follow the program instructions.

4. When the installation of the navigation software **Map-Export** on your PC is completed, then the program will attempt to install the software onto your Pocket PC. If you have already performed the installation manually (**Navigation with optional memory card**, page 27), cancel this step.

PREPARING FOR NAVIGATION

In order to use the navigation program you must compile a map or route on your computer and transfer it to your Pocket PC.

1. Start the program **MapExport** on your PC via **Start** ⇒ **Programs** ⇒ **Medion-Navigator**. An extensive explanation of this program is available under **Help**.
2. Chose a card range by selecting one of the pre-defined options.
3. Click onto this symbol to obtain detailed information about how to use the program. 
4. You can define a **route** or select an **area**. The program will calculate the estimated memory requirement of the file that will be generated. The size of this file may not exceed the available memory space on your Pocket PC. 
5. Clicking onto this symbol will transfer the generated maps onto your Pocket PC.
6. The file will automatically be transferred to your Pocket PC, if an **active connection** exists and if sufficient memory space is available.

MOUNTING THE NAVIGATION SET IN A CAR

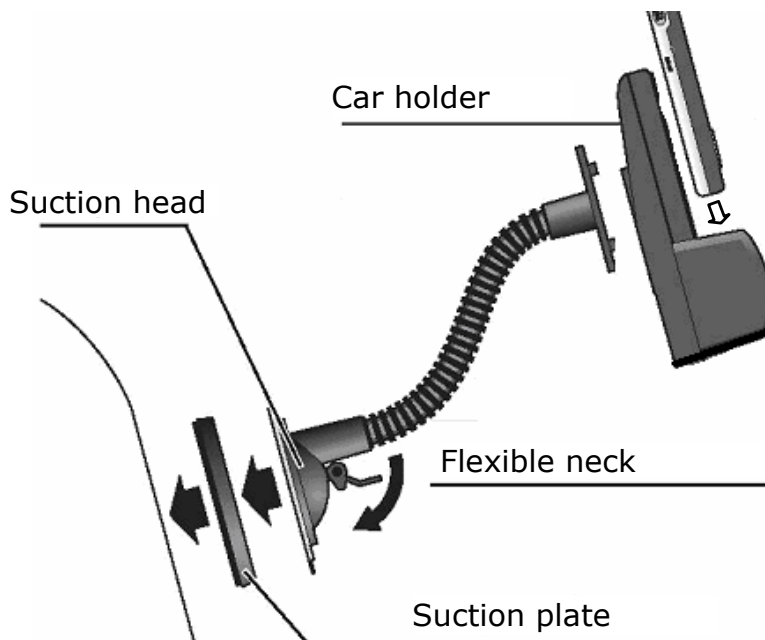
▶ **Attention!** Only fix the holder for the pocket PC to the windscreen, if it does not impede the view. Should this not be possible, then mount the holder with the enclosed suction plate in any way that will allow peril-free and safe operation.

INSTALLATION OF THE HOLDER OF THE POCKET PC

▶ **Hint:** If you want to fix the holder to the wind screen, then you can skip steps 1 and 2.

1. Remove the protective foil from the sticky side of the suction plate.
2. Fix the suction plate to a suitable location on the dashboard. Take care, that the surface of the dashboard is clean and press the suction plate strongly onto the surface.

▶ To obtain a strong and secure hold the suction plate should not be used for 24 hours.



3. Mount the car holder to the flexible neck. Note the labels on the flexible neck. The arrow labeled **close**

must point in the direction of the fixture. The connection closes with a noticeable clicking sound.

4. Place the holder with the suction head onto the suction plate (or directly onto the wind screen) and press the lever on the suction head downwards. The suction head will stick itself firmly to the suction plate.
5. Place the Pocket PC into the car holder and close the two brackets firmly, so that the Pocket PC is held securely.

INSTALLATION OF THE GPS-RECEIVER

The GPS-receiver is solely intended for use and installation in cars.

- ▶ **Hint:** GPS reception may be **limited** by a heated windscreen, a windscreen with antenna or by a metal-coated screen.
- ▶ **Attention:** Check for regular reception at the intended mounting position **before** you finally mount the receiver. The GPS-receiver requires a free line of sight to the sky.

1. Remove the protective foil from the sticky side of the Velcro tape and stick the Velcro tape onto the dashboard as close as possible under the front of the windscreen. Take care that the surface of the windscreen is clean.
2. Remove the protective foil from the sticky side of the Velcro tape and stick it to the bottom side of the GPS-receiver. Take care, that the surface of the bottom of the GPS-receive is clean.
3. Attach the GPS-receiver by means of the Velcro tape.

FIRST INITIALIZATION OF THE GPS-RECEIVER

- ▶ **Hint:** Before using the GPS-receiver for the first time connect it for about 2.5 hours to the cigarette lighter socket, so that the batteries of the GPS-receiver will be fully charged and that the GPS-receiver can determine its current position.
- ▶ **Attention:** Some cars may require the ignition key to be switched on in order to supply power to the cigarette lighter socket. Navigation is not possible, if the GPS-receiver is not supplied with power.
- ▶ **Attention:** Remove the power adapter from the cigarette lighter socket when the car is parked. The receiver constantly consumes power and could drain your battery.
- ▶ **Hint:** When the power adapter is connected, then the Pocket PC will be supplied with power through the car and the battery will also be charged.

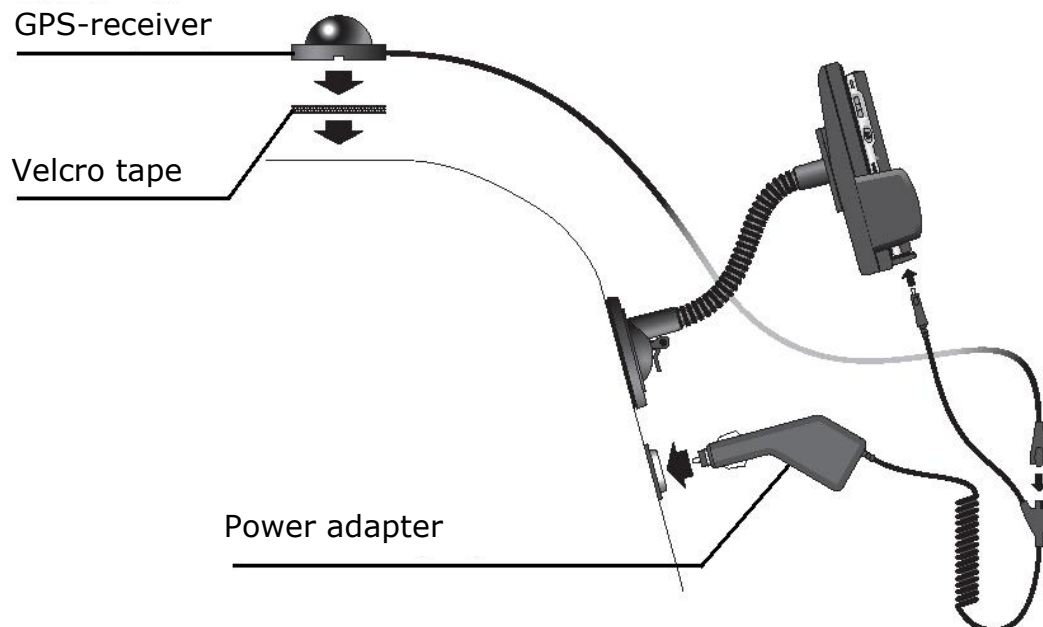
The initialization process will automatically take place, when the GPS-receiver is supplied with power from the cigarette lighter socket

The initialization process can also take place while driving, if e.g. the cigarette lighter socket only functions when the ignition is switched on.

1. Insert the power adapter of the GPS-receiver into the cigarette lighter socket.

The green LED on the power adapter indicates, whether the GPS-receiver is supplied with power.

CONNECTING POCKET PC AND GPS-RECEIVER



1. **Disconnect the power adapter from the cigarette lighter contact** before you connect the GPS-receiver with the Pocket PC, because otherwise a system crash may occur, which might require you to restart the Pocket PC.
2. Connect the GPS-receiver cable with the splitter of the connection cable.
3. Connect the data connector of the connection cable with the pocket PC.
4. Insert the power adapter into the cigarette lighter socket and ensure, that it **will not lose contact** while driving. This could cause a malfunction.

▶ **Hint:** Remove the power adapter from the cigarette lighter socket when ending a trip or when parking the car for a extended period of time. Otherwise the car battery could be drained.

STARTING NAVIGATION

1. Switch on the Pocket PC.
2. Start the **Navigator** program in the program directory of your Pocket PC.
3. As soon as the GPS symbol changes from **GPS!** to **GPS0-9** (the number indicates how many satellites are received), the initialization is completed and you can start to drive.

▶ **Hint:** The GPS-receiver will require at least **15 minutes** for initialization when deployed for the first time. Even when GPS signal reception is indicated the navigation could be imprecise. In all future instances it will take about **30 seconds** until a correct GPS-signal is available. The initialization process must only be executed when the navigation software is run for the first time.

4. Click on **Navigation** to specify your destination. In order to obtain detailed information about how to use the program click on the **Help** button.

▶ **Hint:** Occasionally entry fields may be **covered by the on screen keyboard**. Hide the keyboard by tapping the keyboard symbol in the button bar at the bottom. Clicking the keyboard symbol again will bring the keyboard back again.

CUSTOMER SERVICE

FIRST-AID IN THE EVENT OF MALFUNCTION

GENERAL GUIDANCE

- ▶ The regular running of the Windows® programs "**Defrag**" and "**Scandisk**" on the PC can remove sources of error and raise system performance.

CHECK CONNECTIONS AND CABLES

Start with a careful visual check of all cable links. If the LCD's are not working, make sure that the power is reaching the computer and all peripherals.

- ▶ Switch off the computer and check all cable links. If the computer is connected to peripherals, check also the plug connections of all cables. Do not arbitrarily swap the cables between various units, even if they appear to be precisely the same. The pin assignments of the cables are likely to be different. Once you have ascertained that the power supply is not at fault and all connections are intact, switch on the computer again.

FAULTS AND POSSIBLE CAUSES

The Pocket PC does not respond anymore.

- ▶ Press the reset button. (see page 12).

The Pocket PC is recognized only as a guest by ActiveSync®.

- ▶ See information on page 21.

SD- or MMC-cards are not recognized.

- ▶ Please note that the cards must be used with the contact side to the back.

Elements have inadvertently been overwritten.

- ▶ In the Settings menu of the ActiveSync® program you can define precisely which rules are to be applied during synchronization.
Call up the program Help (by pressing F1) in order to see the effects of the corresponding settings

The Pocket PC shows that insufficient memory is available.

- ▶ Terminate any unnecessary programs in order to free-up sufficient memory space again. In addition under **Start** ⇒ **Settings** ⇒ **Memory** ⇒ **Current programs** terminate applications that are no longer needed.

Once I have installed ActiveSync® I get error messages from a maintenance program.

- ▶ In the temporary folder created by the system, the program creates the WCESCOMM.LOG file which cannot be deleted. If another program tries to do this a corresponding error message appears.

The GPS-receiver cannot be initialised.

If the GPS symbol **GPS!** remains on the screen of the Pocket PC despite correct installation, then this can be caused by the following:

- ▶ The GPS receiver is configured for one of the other connectors and not for COM1 of the Pocket PC.

Solution:

1. Click on **Settings** in the **Main Menu**.
2. Select **GPS configuration** from the list in the window **Settings**.
3. Activate **COM1** and observe the GPS symbol in the upper right corner. As soon as this changes from **GPS!** to **GPS0-9** (the number indicates how many satellites are received), you have successfully activated the COM1 port.
4. Click on **Save changes**.

- ▶ The GPS receiver does not receive power. The green LED on the power adapter is not lit.

Solution:

- ▶ Should the GPS symbol **GPS!** still be shown even after the configuration of the COM1 port, then it could be, that your car does not provide continuous power.
1. Close the navigation program.
 2. Switch on the ignition and restart the navigation program. The GPS symbol **GPS0-9** should now be displayed after a short while.
- ▶ Hint: From now on always switch on the ignition first before starting the navigation software.

ADDITIONAL SUPPORT

If the suggestions in the above section have not solved your problem, please contact our customer service hotline. However, before you contact your Technology Center, please have the following information available:

- How is your computer configured?
- What additional peripherals do you use?
- What messages, if any, appear on your screen?
- What software were you using when the error occurred?
- What steps have you already undertaken to solve the problem?
- Have you upgraded or removed drivers or hardware?
- Can you manually repeat the problem?

If you have been given a customer number previously, please give this number to the technician.

WARRANTY

The receipt serves as proof of first purchase and should be kept in a safe place. Your legal rights **are not limited** by these warranty conditions. It is required should you need to make use of the guarantee.

We guarantee that this equipment is in perfect working order. Upon production of the receipt, the remaining period of guarantee shall pass on from the original parts to the respective replacement parts. If you hand in this equipment to make use of the guarantee, you must remove all programs, data and removable storage media. Products which are sent without accessories will be replaced without accessories. The warranty obligation does not apply in the case of the problem being caused by an accident, a catastrophe, vandalism, misuse, incorrect use, ignoring the safety and maintenance regulations, changes by software, viruses or another piece of equipment or accessories or by other modifications not approved by ourselves. This limited guarantee declaration replaces all other guarantees of express or implied nature. This includes the guarantee of saleability or the suitability for a certain purpose but is not limited to this. In some countries the exclusion of implied guarantees is not permissible upon principle. In this case the validity of all express and implied guarantees is limited to the guarantee period. Once this period has expired, all guarantees become invalid. In some countries limiting the period of validity for implied guarantees is not permitted, so that the above limitation does not come into force. If you have any questions with regard to these guarantee conditions, please contact us.

LIABILITY LIMITATIONS

The contents of this manual are subject to unannounced changes caused by technical progress. Manufacturer and sales shall not be responsible for any damages which have been caused as a result of omissions or errors in the information provided in this manual.

Under no circumstances shall we be liable for any of the following:

1. Claims made against you by third parties based on loss or damage.
2. Loss or damage to your blanks, recordings or data.
3. Economic follow-on damage (including lost profit or savings) or associated damage even in the case that we have been informed of the possibilities of this type of damage.

In some countries the exclusion or limitation of accompanying or follow-on damage is not legally accepted so that the above limitations do not come into force.

COPYING THIS MANUAL

This document contains legally protected information. All rights reserved. Copying in mechanical, electronic and any other form without the written approval of the manufacturer is prohibited.

Copyright © 2003, All rights reserved. Microsoft®, MS-DOS®, and Windows are registered trademarks of Microsoft Corporation in the U.S. and other countries. Pentium® is a registered trademark of Intel Corporation. The names of actual companies and products mentioned herein may be the trademarks of their respective owners. Information in this document is subject to change without notice.